

Anti-Bax antibody ab263897

[8 References](#) [4 Images](#)

Overview

Product name	Anti-Bax antibody
Description	Rabbit polyclonal to Bax
Host species	Rabbit
Tested applications	Suitable for: IHC-P, WB, ICC/IF, IP
Species reactivity	Reacts with: Human
Immunogen	Synthetic peptide within Human Bax (N terminal). The exact sequence is proprietary. Carrier-protein conjugated Database link: Q07812
Positive control	WB: HepG2 cells; ICC/IF: HeLa cells; IHC-P: Human lung carcinoma; IP: MCF-7 cell extract.
General notes	<p>The Life Science industry has been in the grips of a reproducibility crisis for a number of years. Abcam is leading the way in addressing this with our range of recombinant monoclonal antibodies and knockout edited cell lines for gold-standard validation. Please check that this product meets your needs before purchasing.</p> <p>If you have any questions, special requirements or concerns, please send us an inquiry and/or contact our Support team ahead of purchase. Recommended alternatives for this product can be found below, along with publications, customer reviews and Q&As</p>

Properties

Form	Liquid
Storage instructions	Shipped at 4°C. Store at +4°C short term (1-2 weeks). Upon delivery aliquot. Store at -20°C long term. Avoid freeze / thaw cycle.
Storage buffer	pH: 7.00 Preservative: 0.025% Proclin 300 Constituents: 79% PBS, 20% Glycerol (glycerin, glycerine)
Purity	Affinity purified
Clonality	Polyclonal
Isotype	IgG

Applications

The Abpromise guarantee

Our **Abpromise guarantee** covers the use of ab263897 in the following tested applications.

The application notes include recommended starting dilutions; optimal dilutions/concentrations should be determined by the end user.

Application	Abreviews	Notes
IHC-P		1/100 - 1/1000. Perform heat mediated antigen retrieval before commencing with IHC staining protocol.
WB		1/500 - 1/3000. Predicted molecular weight: 21 kDa.
ICC/IF		1/100 - 1/1000.
IP		1/100 - 1/500.

Target**Function**

Accelerates programmed cell death by binding to, and antagonizing the apoptosis repressor BCL2 or its adenovirus homolog E1B 19k protein. Under stress conditions, undergoes a conformation change that causes translocation to the mitochondrion membrane, leading to the release of cytochrome c that then triggers apoptosis. Promotes activation of CASP3, and thereby apoptosis.

Tissue specificity

Expressed in a wide variety of tissues. Isoform Psi is found in glial tumors. Isoform Alpha is expressed in spleen, breast, ovary, testis, colon and brain, and at low levels in skin and lung. Isoform Sigma is expressed in spleen, breast, ovary, testis, lung, colon, brain and at low levels in skin. Isoform Alpha and isoform Sigma are expressed in pro-myelocytic leukemia, histiocytic lymphoma, Burkitt's lymphoma, T-cell lymphoma, lymphoblastic leukemia, breast adenocarcinoma, ovary adenocarcinoma, prostate carcinoma, prostate adenocarcinoma, lung carcinoma, epidermoid carcinoma, small cell lung carcinoma and colon adenocarcinoma cell lines.

Sequence similarities

Belongs to the Bcl-2 family.

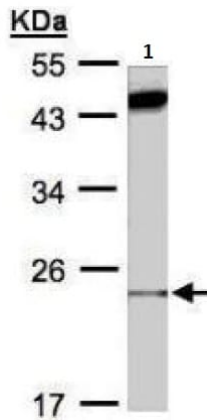
Domain

Intact BH3 motif is required by BIK, BID, BAK, BAD and BAX for their pro-apoptotic activity and for their interaction with anti-apoptotic members of the Bcl-2 family.

Cellular localization

Cytoplasm and Mitochondrion membrane. Cytoplasm. Colocalizes with 14-3-3 proteins in the cytoplasm. Under stress conditions, undergoes a conformation change that causes release from JNK-phosphorylated 14-3-3 proteins and translocation to the mitochondrion membrane.

Images



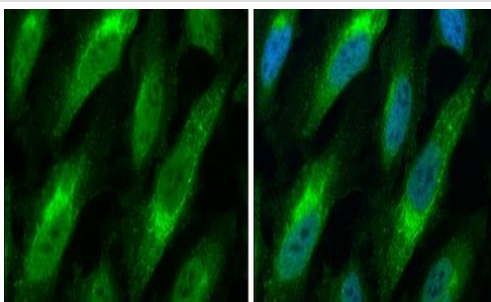
Western blot - Anti-Bax antibody (ab263897)

Anti-Bax antibody (ab263897) at 1/1000 dilution + HepG2 whole cell lysate at 30 μ g

Secondary

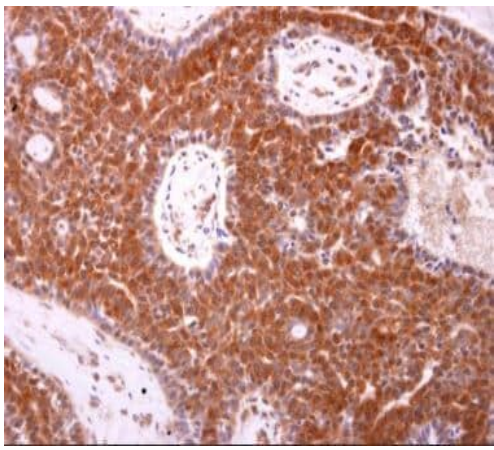
HRP-conjugated anti-rabbit IgG

Predicted band size: 21 kDa



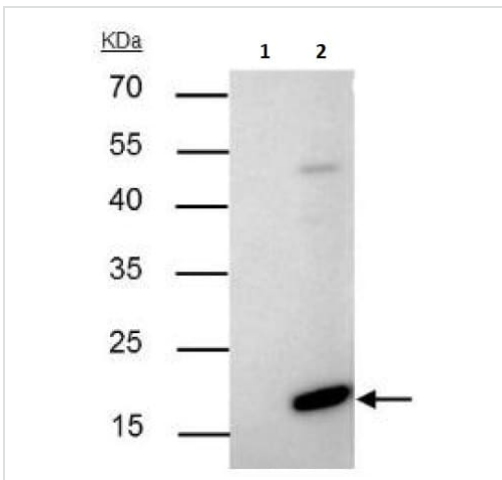
Immunocytochemistry/ Immunofluorescence - Anti-Bax antibody (ab263897)

Immunocytochemistry/Immunofluorescent analysis of 4% paraformaldehyde-fixed HeLa cells labelling Bax with ab263897 at 1/400 dilution (green). Hoechst 33342 was used as a nuclear counterstain (blue).



Immunohistochemistry (Formalin/PFA-fixed paraffin-embedded sections) - Anti-Bax antibody (ab263897)

Immunohistochemical analysis of paraffin-embedded human lung carcinoma tissue labelling Bax with ab263897 at 1/500 dilution. Antigen Retrieval: Trilogy™ (EDTA based, pH 8.0) buffer, 15min.



Immunoprecipitation - Anti-Bax antibody (ab263897)

Bax was immunoprecipitated from MCF-7 whole cell lysate with 4µg ab263897. Western blot was performed on the immunoprecipitate using Ab263897 at 1/500 dilution. EasyBlot anti-rabbit IgG was used as the secondary antibody. 15% SDS PAGE.

Lane 1: MCF-7 whole cell lysate control with 4ug of preimmune Rabbit IgG

Lane 2: ab263897 IP in MCF-7 whole cell lysate

Please note: All products are "FOR RESEARCH USE ONLY. NOT FOR USE IN DIAGNOSTIC PROCEDURES"

Our Abpromise to you: Quality guaranteed and expert technical support

- Replacement or refund for products not performing as stated on the datasheet
- Valid for 12 months from date of delivery
- Response to your inquiry within 24 hours
- We provide support in Chinese, English, French, German, Japanese and Spanish
- Extensive multi-media technical resources to help you
- We investigate all quality concerns to ensure our products perform to the highest standards

If the product does not perform as described on this datasheet, we will offer a refund or replacement. For full details of the Abpromise, please visit <https://www.abcam.com/abpromise> or contact our technical team.

Terms and conditions

- Guarantee only valid for products bought direct from Abcam or one of our authorized distributors