



### Anti-BBF2H7 antibody ab262873

1 Image

#### Overview

<b>Product name</b>	Anti-BBF2H7 antibody
<b>Description</b>	Rabbit polyclonal to BBF2H7
<b>Host species</b>	Rabbit
<b>Tested applications</b>	<b>Suitable for:</b> ICC/IF
<b>Species reactivity</b>	<b>Reacts with:</b> Human
<b>Immunogen</b>	Recombinant fragment corresponding to Human BBF2H7 aa 1-150. Database link: <a href="#">Q70SY1</a>
	 <a href="#">Run BLAST with</a>  <a href="#">Run BLAST with</a>
<b>Positive control</b>	ICC/IF: U-2-OS cells.
<b>General notes</b>	<p>The Life Science industry has been in the grips of a reproducibility crisis for a number of years. Abcam is leading the way in addressing this with our range of recombinant monoclonal antibodies and knockout edited cell lines for gold-standard validation. Please check that this product meets your needs before purchasing.</p> <p>If you have any questions, special requirements or concerns, please send us an inquiry and/or contact our Support team ahead of purchase. Recommended alternatives for this product can be found below, along with publications, customer reviews and Q&amp;As</p>

#### Properties

<b>Form</b>	Liquid
<b>Storage instructions</b>	Shipped at 4°C. Store at +4°C short term (1-2 weeks). Upon delivery aliquot. Store at -20°C long term. Avoid freeze / thaw cycle.
<b>Storage buffer</b>	pH: 7.20 Preservative: 0.02% Sodium azide Constituents: 40% Glycerol (glycerin, glycerine), PBS
<b>Purity</b>	Immunogen affinity purified
<b>Clonality</b>	Polyclonal
<b>Isotype</b>	IgG

#### Applications

## The Abpromise guarantee

Our **Abpromise guarantee** covers the use of ab262873 in the following tested applications.

The application notes include recommended starting dilutions; optimal dilutions/concentrations should be determined by the end user.

Application	Abreviews	Notes
ICC/IF		Use a concentration of 1 - 4 µg/ml. Fixation/Permeabilization: PFA/Triton X-100

## Target

### Function

Transcriptional activator which is processed and activated during endoplasmic reticulum stress late phase. Binds to the cAMP response element (CRE) and activates transcription through CRE. Regulates the transcription of unfolded protein response target genes, preventing accumulation of unfolded proteins in damaged neurons. Also regulates the expression of SEC23A, accelerating protein trafficking from the ER to the Golgi thereby playing a key role in chondrocyte differentiation and formation of epiphyseal cartilage.

### Tissue specificity

Widely expressed with highest levels in placenta, lung, spleen and intestine, and lowest levels in heart, brain, skeletal muscle, thymus, colon and leukocytes. In fetal tissues, the weakest expression is detected in brain and heart.

### Involvement in disease

A chromosomal aberration involving CREB3L2 is found in low grade fibromyxoid sarcoma (LGFMS). Translocation t(7;16)(q33;p11) with FUS.

### Sequence similarities

Belongs to the bZIP family. ATF subfamily.  
Contains 1 bZIP (basic-leucine zipper) domain.

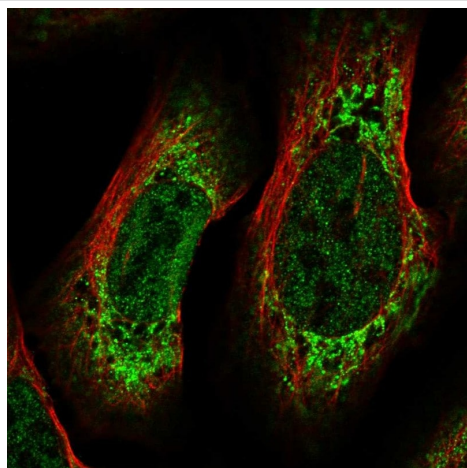
### Post-translational modifications

Controlled by regulated intramembrane proteolysis (RIP). Following ER stress a fragment containing the cytoplasmic transcription factor domain is released by proteolysis. The cleavage seems to be performed sequentially by site-1 and site-2 proteases (PS1 and PS2).

### Cellular localization

Endoplasmic reticulum membrane and Nucleus. Under ER stress the cleaved N-terminal cytoplasmic domain translocates into the nucleus.

## Images



PFA-fixed, Triton X-100 permeabilized human U-2OS cells stained for BBF2H7 (green) using ab262873 at 4 µg/ml in ICC/IF.

Immunocytochemistry/ Immunofluorescence - Anti-BBF2H7 antibody (ab262873)

**Please note:** All products are "FOR RESEARCH USE ONLY. NOT FOR USE IN DIAGNOSTIC PROCEDURES"

### Our Abpromise to you: Quality guaranteed and expert technical support

---

- Replacement or refund for products not performing as stated on the datasheet
- Valid for 12 months from date of delivery
- Response to your inquiry within 24 hours
- We provide support in Chinese, English, French, German, Japanese and Spanish
- Extensive multi-media technical resources to help you
- We investigate all quality concerns to ensure our products perform to the highest standards

If the product does not perform as described on this datasheet, we will offer a refund or replacement. For full details of the Abpromise, please visit <https://www.abcam.com/abpromise> or contact our technical team.

### Terms and conditions

---

- Guarantee only valid for products bought direct from Abcam or one of our authorized distributors