


Product datasheet

Anti-BBOX1 antibody [EPR11309] ab171959

Recombinant RabMAb

[1 References](#) [2 Images](#)

Overview

Product name	Anti-BBOX1 antibody [EPR11309]
Description	Rabbit monoclonal [EPR11309] to BBOX1
Host species	Rabbit
Tested applications	Suitable for: WB Unsuitable for: ICC/IF,IHC-P or IP
Species reactivity	Reacts with: Human Predicted to work with: Orangutan  Does not react with: Mouse, Rat
Immunogen	Synthetic peptide within Human BBOX1 aa 1-100 (Cysteine residue). The exact sequence is proprietary. Database link: O75936
Positive control	Human fetal kidney lysate
General notes	This product is a recombinant monoclonal antibody, which offers several advantages including: <ul style="list-style-type: none">- High batch-to-batch consistency and reproducibility- Improved sensitivity and specificity- Long-term security of supply- Animal-free production For more information see here . Our RabMAb [®] technology is a patented hybridoma-based technology for making rabbit monoclonal antibodies. For details on our patents, please refer to RabMAb[®] patents .

Properties

Form	Liquid
Storage instructions	Shipped at 4°C. Store at +4°C short term (1-2 weeks). Upon delivery aliquot. Store at -20°C long term. Avoid freeze / thaw cycle.
Storage buffer	pH: 7.20 Preservative: 0.01% Sodium azide Constituents: 9% PBS, 40% Glycerol (glycerin, glycerine), 0.05% BSA, 50% Tissue culture supernatant
Purity	Tissue culture supernatant

Clonality	Monoclonal
Clone number	EPR11309
Isotype	IgG

Applications

The Abpromise guarantee Our **Abpromise guarantee** covers the use of ab171959 in the following tested applications. The application notes include recommended starting dilutions; optimal dilutions/concentrations should be determined by the end user.

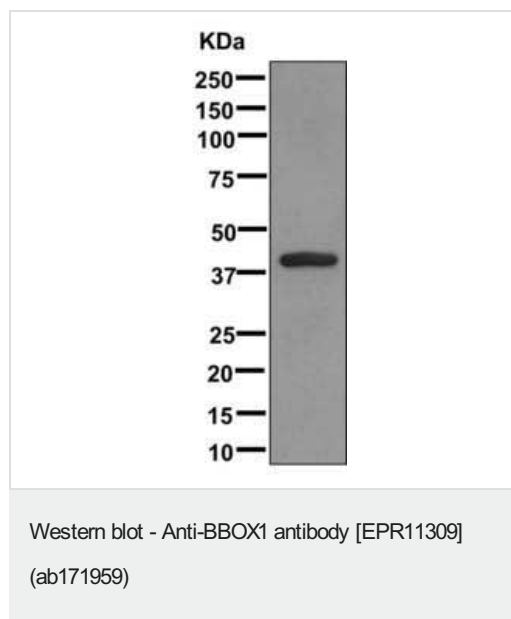
Application	Abreviews	Notes
WB		1/1000 - 1/5000. Predicted molecular weight: 45 kDa.

Application notes Is unsuitable for ICC/IF, IHC-P or IP.

Target

Function	Catalyzes the formation of L-carnitine from gamma-butyrobetaine.
Tissue specificity	Highly expressed in kidney; moderately expressed in liver; very low expression in brain.
Pathway	Amine and polyamine biosynthesis; carnitine biosynthesis.
Sequence similarities	Belongs to the gamma-BBH/TMLD family.
Cellular localization	Cytoplasm.





Images



Anti-BBOX1 antibody [EPR11309] (ab171959) at 1/1000 dilution + Human fetal kidney lysate at 10 µg

Predicted band size: 45 kDa

Why choose a recombinant antibody?

 Research with confidence Consistent and reproducible results	 Long-term and scalable supply Recombinant technology
 Success from the first experiment Confirmed specificity	 Ethical standards compliant Animal-free production

Anti-BBOX1 antibody [EPR11309] (ab171959)

Please note: All products are "FOR RESEARCH USE ONLY. NOT FOR USE IN DIAGNOSTIC PROCEDURES"

Our Abpromise to you: Quality guaranteed and expert technical support

- Replacement or refund for products not performing as stated on the datasheet
- Valid for 12 months from date of delivery
- Response to your inquiry within 24 hours
- We provide support in Chinese, English, French, German, Japanese and Spanish
- Extensive multi-media technical resources to help you
- We investigate all quality concerns to ensure our products perform to the highest standards

If the product does not perform as described on this datasheet, we will offer a refund or replacement. For full details of the Abpromise, please visit <https://www.abcam.com/abpromise> or contact our technical team.

Terms and conditions

- Guarantee only valid for products bought direct from Abcam or one of our authorized distributors