




## Product datasheet

### Anti-BBS4 antibody ab197122

[2 References](#) [2 Images](#)

#### Overview

<b>Product name</b>	Anti-BBS4 antibody
<b>Description</b>	Rabbit polyclonal to BBS4
<b>Host species</b>	Rabbit
<b>Tested applications</b>	<b>Suitable for:</b> IHC-P, WB
<b>Species reactivity</b>	<b>Reacts with:</b> Human <b>Predicted to work with:</b> Mouse, Cow 
<b>Immunogen</b>	Recombinant fragment corresponding to Human BBS4 aa 300 to the C-terminus. (BC027624) Database link: <a href="#">Q96RK4</a>  <a href="#">Run BLAST with</a>  <a href="#">Run BLAST with</a>
<b>Positive control</b>	HeLa and 293 cell lysates; Human fetal pancreas tissue.
<b>General notes</b>	<p>The Life Science industry has been in the grips of a reproducibility crisis for a number of years. Abcam is leading the way in addressing this with our range of recombinant monoclonal antibodies and knockout edited cell lines for gold-standard validation. Please check that this product meets your needs before purchasing.</p> <p>If you have any questions, special requirements or concerns, please send us an inquiry and/or contact our Support team ahead of purchase. Recommended alternatives for this product can be found below, along with publications, customer reviews and Q&amp;As</p>

#### Properties

<b>Form</b>	Lyophilized:Reconstitute in 200ul sterile H2O.
<b>Storage instructions</b>	Shipped at 4°C. Store at +4°C short term (1-2 weeks). Upon delivery aliquot. Store at -20°C long term. Avoid freeze / thaw cycle.
<b>Storage buffer</b>	pH: 7.20 Preservative: 0.02% Sodium azide Constituents: 98% PBS, 1% BSA
<b>Purity</b>	Immunogen affinity purified
<b>Clonality</b>	Polyclonal
<b>Isotype</b>	IgG

## Applications

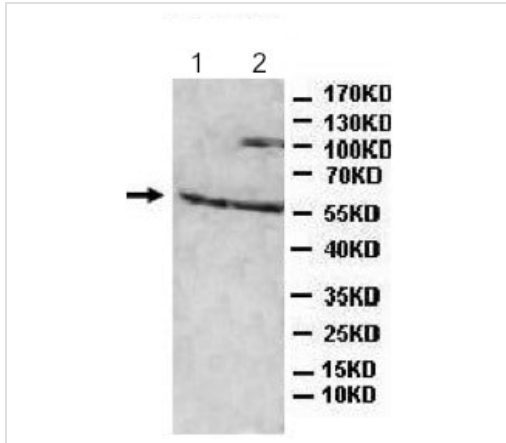
**The Abpromise guarantee** Our **Abpromise guarantee** covers the use of ab197122 in the following tested applications. The application notes include recommended starting dilutions; optimal dilutions/concentrations should be determined by the end user.

Application	Abreviews	Notes
IHC-P		1/100 - 1/500.
WB		1/200 - 1/1000. Predicted molecular weight: 58 kDa.

## Target

<b>Function</b>	May be required for the dynein-mediated transport of pericentriolar proteins to the centrosome. Required for microtubule anchoring at the centrosome but not for microtubule nucleation. The BBSome complex is required for ciliogenesis but is dispensable for centriolar satellite function. This ciliogenic function is mediated in part by the Rab8 GDP/GTP exchange factor, which localizes to the basal body and contacts the BBSome. Rab8(GTP) enters the primary cilium and promotes extension of the ciliary membrane. Firstly the BBSome associates with the ciliary membrane and binds to Rabin8, the guanosyl exchange factor (GEF) for Rab8 and then the Rab8-GTP localizes to the cilium and promotes docking and fusion of carrier vesicles to the base of the ciliary membrane.
<b>Tissue specificity</b>	Ubiquitously expressed. The highest level of expression is found in the kidney.
<b>Involvement in disease</b>	Defects in BBS4 are the cause of Bardet-Biedl syndrome type 4 (BBS4) [MIM:209900]. Bardet-Biedl syndrome (BBS) is a genetically heterogeneous, autosomal recessive disorder characterized by usually severe pigmentary retinopathy, early onset obesity, polydactyly, hypogenitalism, renal malformation and mental retardation. Secondary features include diabetes mellitus, hypertension and congenital heart disease. A relatively high incidence of BBS is found in the mixed Arab populations of Kuwait and in Bedouin tribes throughout the Middle East, most likely due to the high rate of consanguinity in these populations and a founder effect.
<b>Sequence similarities</b>	Belongs to the BBS4 family. Contains 10 TPR repeats.
<b>Cellular localization</b>	Cytoplasm > cytoskeleton > centrosome. Cytoplasm > cytoskeleton. Cell projection > cilium membrane. Cytoplasm. Localizes to the pericentriolar region throughout the cell cycle. Centrosomal localization requires dynein. Localizes to nonmembranous centriolar satellites in the cytoplasm.

## Images



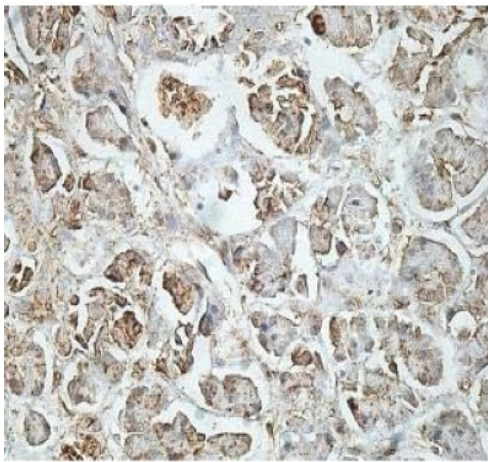
Western blot - Anti-BBS4 antibody (ab197122)

**All lanes :** Anti-BBS4 antibody (ab197122) at 1/500 dilution

**Lane 1 :** HeLa cell lysate

**Lane 2 :** 293 cell lysate

**Predicted band size:** 58 kDa



Immunohistochemistry (Formalin/PFA-fixed paraffin-embedded sections) - Anti-BBS4 antibody (ab197122)

Immunohistochemical analysis of formalin-fixed, paraffin-embedded Human fetal pancreas tissue labeling BBS4 with ab197122 at 1/100 dilution.

**Please note:** All products are "FOR RESEARCH USE ONLY. NOT FOR USE IN DIAGNOSTIC PROCEDURES"

### Our Promise to you: Quality guaranteed and expert technical support

- Replacement or refund for products not performing as stated on the datasheet
- Valid for 12 months from date of delivery
- Response to your inquiry within 24 hours

- We provide support in Chinese, English, French, German, Japanese and Spanish
- Extensive multi-media technical resources to help you
- We investigate all quality concerns to ensure our products perform to the highest standards

If the product does not perform as described on this datasheet, we will offer a refund or replacement. For full details of the Abpromise, please visit <https://www.abcam.com/abpromise> or contact our technical team.

#### **Terms and conditions**

---

- Guarantee only valid for products bought direct from Abcam or one of our authorized distributors