


Product datasheet

Anti-BCAR1 antibody ab137507

3 Images

Overview

Product name	Anti-BCAR1 antibody
Description	Rabbit polyclonal to BCAR1
Host species	Rabbit
Tested applications	Suitable for: WB, ICC/IF
Species reactivity	Reacts with: Mouse, Human Predicted to work with: Rat, Cow 
Immunogen	Recombinant fragment, corresponding to a region within internal sequence amino acids 250-710 of Human BCAR1 (UniProt ID: P56945).
Positive control	A431, H1299, HeLa, HepG2 and NIH 3T3 cell lysates; methanol fixed A431 cells.
General notes	<p>The Life Science industry has been in the grips of a reproducibility crisis for a number of years. Abcam is leading the way in addressing this with our range of recombinant monoclonal antibodies and knockout edited cell lines for gold-standard validation. Please check that this product meets your needs before purchasing.</p> <p>If you have any questions, special requirements or concerns, please send us an inquiry and/or contact our Support team ahead of purchase. Recommended alternatives for this product can be found below, along with publications, customer reviews and Q&As</p>

Properties

Form	Liquid
Storage instructions	Shipped at 4°C. Upon delivery aliquot and store at -20°C or -80°C. Avoid repeated freeze / thaw cycles.
Storage buffer	pH: 7.00 Preservative: 0.01% Thimerosal (merthiolate) Constituents: 89.99% PBS, 10% Glycerol (glycerin, glycerine)
Purity	Immunogen affinity purified
Clonality	Polyclonal
Isotype	IgG

Applications

The Abpromise guarantee

Our **Abpromise guarantee** covers the use of ab137507 in the following tested applications.

The application notes include recommended starting dilutions; optimal dilutions/concentrations should be determined by the end user.

Application	Abreviews	Notes
WB		1/500 - 1/3000. Predicted molecular weight: 93 kDa.
ICC/IF		1/100 - 1/1000.

Target

Function

Docking protein which plays a central coordinating role for tyrosine kinase-based signaling related to cell adhesion. Implicated in induction of cell migration. Overexpression confers antiestrogen resistance on breast cancer cells.

Tissue specificity

Widely expressed with an abundant expression in the testis. Low level of expression seen in the liver, thymus, and peripheral blood leukocytes. The protein has been detected in a B-cell line.

Sequence similarities

Belongs to the CAS family.
Contains 1 SH3 domain.

Domain

Contains a central domain (substrate domain) containing multiple potential SH2-binding sites and a C-terminal domain containing a divergent helix-loop-helix (HLH) motif. The SH2-binding sites putatively bind CRK, NCK and ABL1 SH2 domains. The HLH motif is absolutely required for the induction of pseudohyphal growth in yeast and mediates heterodimerization with NEDD9. A serine-rich region promotes activation of the serum response element (SRE). The SH3 domain is necessary for the localization of the protein to focal adhesions and interacts with one proline-rich region of PTK2/FAK11.

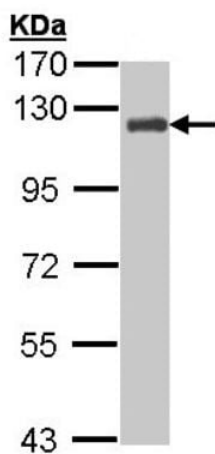
Post-translational modifications

PTK2/FAK1 activation mediates phosphorylation at the YDYVHL motif; phosphorylation is most likely catalyzed by SRC family members. SRC-family kinases are recruited to the phosphorylated sites and can phosphorylate other tyrosine residues. Tyrosine phosphorylation is triggered by integrin-mediated adhesion of cells to the extracellular matrix. Dephosphorylated by PTPN14 at Tyr-128.

Cellular localization

Cell junction, focal adhesion. Cytoplasm. Unphosphorylated form localizes in the cytoplasm and can move to the membrane upon tyrosine phosphorylation.

Images

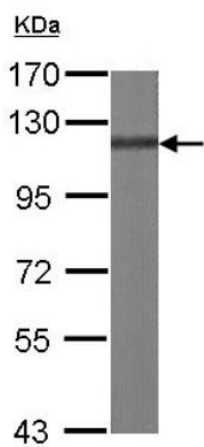


Western blot - Anti-BCAR1 antibody (ab137507)

Anti-BCAR1 antibody (ab137507) at 1/1000 dilution + H1299 whole cell lysate at 30 μ g

Predicted band size: 93 kDa

7.5% SDS PAGE

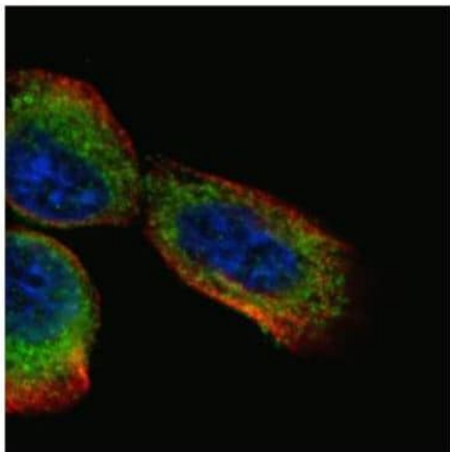


Western blot - Anti-BCAR1 antibody (ab137507)

Anti-BCAR1 antibody (ab137507) at 1/1000 dilution + NIH 3T3 whole cell lysate at 30 μ g

Predicted band size: 93 kDa

7.5% SDS PAGE



Immunocytochemistry/ Immunofluorescence - Anti-BCAR1 antibody (ab137507)

Confocal immunofluorescence analysis of methanol fixed A431 cells labelling BCAR1 with ab137507 (green) at 1/500 dilution. Alpha tubulin filaments were labeled with an Alpha tubulin antibody (red) at 1/500 dilution.

Please note: All products are "FOR RESEARCH USE ONLY. NOT FOR USE IN DIAGNOSTIC PROCEDURES"

Our Abpromise to you: Quality guaranteed and expert technical support

- Replacement or refund for products not performing as stated on the datasheet
- Valid for 12 months from date of delivery
- Response to your inquiry within 24 hours
- We provide support in Chinese, English, French, German, Japanese and Spanish
- Extensive multi-media technical resources to help you
- We investigate all quality concerns to ensure our products perform to the highest standards

If the product does not perform as described on this datasheet, we will offer a refund or replacement. For full details of the Abpromise, please visit <https://www.abcam.com/abpromise> or contact our technical team.

Terms and conditions

- Guarantee only valid for products bought direct from Abcam or one of our authorized distributors