

Product datasheet

Anti-BCCIP antibody ab97577

[2 Images](#)

Overview

Product name	Anti-BCCIP antibody
Description	Rabbit polyclonal to BCCIP
Host species	Rabbit
Tested applications	Suitable for: WB, ICC/IF
Species reactivity	Reacts with: Human
Immunogen	Synthetic peptide corresponding to a region within amino acids 181-243 of Human BCCIP (Q9P287)

 [Run BLAST with ExpASY](#)  [Run BLAST with NCBI](#)

Positive control A431, Hela, 293T or HepG2 cell lines.

General notes The Life Science industry has been in the grips of a reproducibility crisis for a number of years. Abcam is leading the way in addressing this with our range of recombinant monoclonal antibodies and knockout edited cell lines for gold-standard validation. Please check that this product meets your needs before purchasing.

If you have any questions, special requirements or concerns, please send us an inquiry and/or contact our Support team ahead of purchase. Recommended alternatives for this product can be found below, along with publications, customer reviews and Q&As

Properties

Form	Liquid
Storage instructions	Shipped at 4°C. Upon delivery aliquot and store at -20°C or -80°C. Avoid repeated freeze / thaw cycles.
Storage buffer	pH: 7.00 Preservative: 0.01% Thimerosal (merthiolate) Constituents: 1.21% Tris, 0.75% Glycine, 10% Glycerol (glycerin, glycerine)
Purity	Immunogen affinity purified
Clonality	Polyclonal
Isotype	IgG

Applications

The Abpromise guarantee

Our **Abpromise guarantee** covers the use of ab97577 in the following tested applications.

The application notes include recommended starting dilutions; optimal dilutions/concentrations should be determined by the end user.

Application	Abreviews	Notes
WB		1/1000. Predicted molecular weight: 36 kDa.
ICC/IF		1/200.

Target

Function

May promote cell cycle arrest by enhancing the inhibition of CDK2 activity by CDKN1A. May be required for repair of DNA damage by homologous recombination in conjunction with BRCA2. May not be involved in non-homologous end joining (NHEJ).

Tissue specificity

Expressed at high levels in testis and skeletal muscle and at lower levels in brain, heart, kidney, liver, lung, ovary, pancreas, placenta, and spleen.

Sequence similarities

Belongs to the BCP1 family.

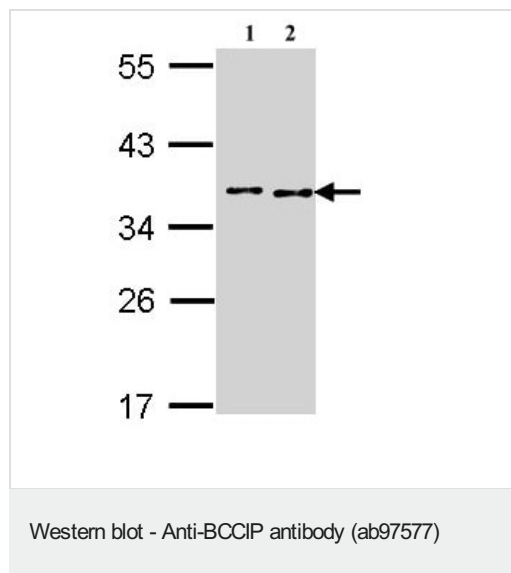
Developmental stage

Isoform 1 is expressed throughout the cell cycle. Isoform 2 is expressed following mitosis and peaks in the G1/S phase of the cell cycle.

Cellular localization

Nucleus. Colocalizes with BRCA2 in discrete nuclear foci.

Images



All lanes : Anti-BCCIP antibody (ab97577) at 1/1000 dilution

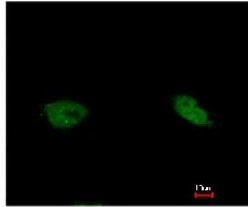
Lane 1 : A431 whole cell lysate

Lane 2 : HeLa whole cell lysate

Lysates/proteins at 30 µg per lane.

Predicted band size: 36 kDa

10% SDS Page



Immunofluorescence analysis of paraformaldehyde-fixed HeLa cells, using ab97577 at 1/200 dilution. Bottom picture shows stain merged with DNA probe.

Immunocytochemistry/ Immunofluorescence - Anti-BCCIP antibody (ab97577)

Please note: All products are "FOR RESEARCH USE ONLY. NOT FOR USE IN DIAGNOSTIC PROCEDURES"

Our Abpromise to you: Quality guaranteed and expert technical support

- Replacement or refund for products not performing as stated on the datasheet
- Valid for 12 months from date of delivery
- Response to your inquiry within 24 hours
- We provide support in Chinese, English, French, German, Japanese and Spanish
- Extensive multi-media technical resources to help you
- We investigate all quality concerns to ensure our products perform to the highest standards

If the product does not perform as described on this datasheet, we will offer a refund or replacement. For full details of the Abpromise, please visit <https://www.abcam.com/abpromise> or contact our technical team.

Terms and conditions

- Guarantee only valid for products bought direct from Abcam or one of our authorized distributors