

Product datasheet

Anti-BCG1 antibody ab236592

[5 Images](#)

Overview

Product name	Anti-BCG1 antibody
Description	Rabbit polyclonal to BCG1
Host species	Rabbit
Tested applications	Suitable for: WB, IP, IHC-P, ICC/IF
Species reactivity	Reacts with: Human
Immunogen	Recombinant fragment corresponding to Human BCG1 aa 38-285. Database link: Q9UNF1
Positive control	WB; MCF7, HepG2, A549, HEK-293 and PC-3 whole cell lysates. IHC-P: Human testis and adrenal gland tissues. ICC/IF: HeLa cells. IP: HepG2 whole cell lysate.
General notes	<p>The Life Science industry has been in the grips of a reproducibility crisis for a number of years. Abcam is leading the way in addressing this with our range of recombinant monoclonal antibodies and knockout edited cell lines for gold-standard validation. Please check that this product meets your needs before purchasing.</p> <p>If you have any questions, special requirements or concerns, please send us an inquiry and/or contact our Support team ahead of purchase. Recommended alternatives for this product can be found below, along with publications, customer reviews and Q&As</p>

Properties

Form	Liquid
Storage instructions	Shipped at 4°C. Store at +4°C short term (1-2 weeks). Upon delivery aliquot. Store at -20°C long term. Avoid freeze / thaw cycle.
Storage buffer	pH: 7.40 Preservative: 0.03% Proclin 300 Constituents: 50% Glycerol (glycerin, glycerine), PBS
Purity	Protein G purified
Purification notes	Purity >95%.
Clonality	Polyclonal
Isotype	IgG

Applications

The Abpromise guarantee

Our **Abpromise guarantee** covers the use of ab236592 in the following tested applications.

The application notes include recommended starting dilutions; optimal dilutions/concentrations should be determined by the end user.

Application	Abreviews	Notes
WB		1/1000 - 1/5000. Predicted molecular weight: 65 kDa.
IP		1/200 - 1/2000.
IHC-P		1/200 - 1/500.
ICC/IF		1/50 - 1/200.

Target

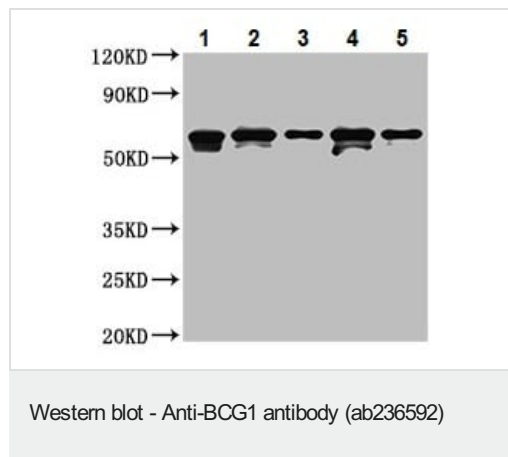
Tissue specificity

Widely expressed in normal tissues.

Sequence similarities

Contains 1 MAGE domain.

Images



All lanes : Anti-BCG1 antibody (ab236592) at 1/1000 dilution

Lane 1 : MCF7 (human breast adenocarcinoma cell line) whole cell lysate

Lane 2 : HepG2 (human liver hepatocellular carcinoma cell line) whole cell lysate

Lane 3 : A549 (human lung carcinoma cell line) whole cell lysate

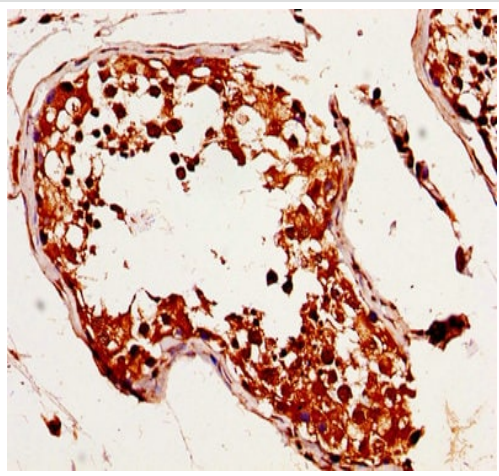
Lane 4 : HEK-293 (human epithelial cell line from embryonic kidney) whole cell lysate

Lane 5 : PC-3 (human prostate adenocarcinoma cell line) whole cell lysate

Secondary

All lanes : Goat polyclonal to rabbit IgG at 1/50000 dilution

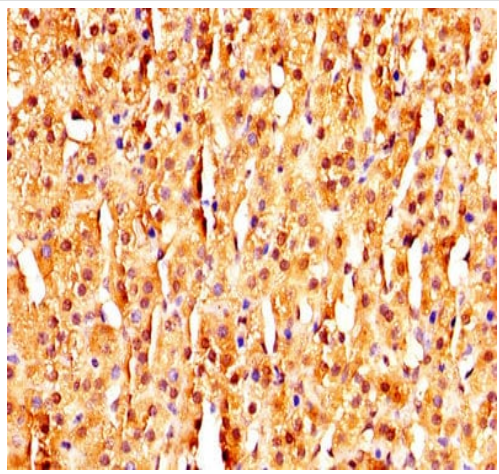
Predicted band size: 65 kDa



Immunohistochemistry (Formalin/PFA-fixed paraffin-embedded sections) - Anti-BCG1 antibody (ab236592)

Paraffin-embedded human testis tissue stained for BCG1 using ab236592 at 1/320 dilution in immunohistochemical analysis.

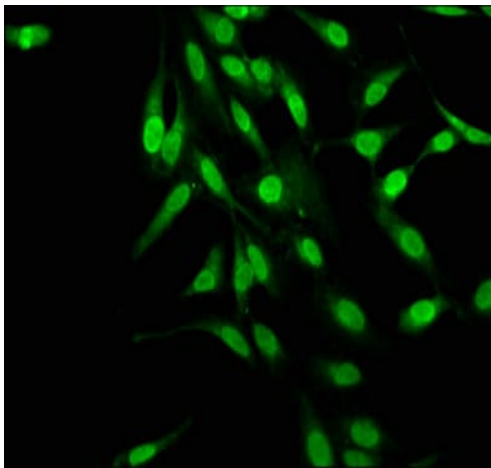
After dewaxing and hydration, antigen retrieval was mediated by high pressure in a citrate buffer (pH 6.0). Section was blocked with 10% normal goat serum 30min at RT. Then primary antibody (1% BSA) was incubated at 4°C overnight. The primary is detected by a biotinylated secondary antibody and visualized tissue using an HRP conjugated SP system.



Immunohistochemistry (Formalin/PFA-fixed paraffin-embedded sections) - Anti-BCG1 antibody (ab236592)

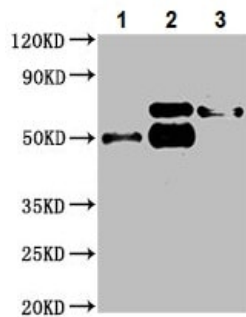
Paraffin-embedded human adrenal gland tissue stained for BCG1 using ab236592 at 1/320 dilution in immunohistochemical analysis.

After dewaxing and hydration, antigen retrieval was mediated by high pressure in a citrate buffer (pH 6.0). Section was blocked with 10% normal goat serum 30min at RT. Then primary antibody (1% BSA) was incubated at 4°C overnight. The primary is detected by a biotinylated secondary antibody and visualized tissue using an HRP conjugated SP system.



Immunocytochemistry/ Immunofluorescence - Anti-BCG1 antibody (ab236592)

4% paraformaldehyde-fixed, 0.2% Triton X-100 permeabilized HeLa (human epithelial cell line from cervix adenocarcinoma) cells stained for BCG1 (green) using ab236592 at 1/145 dilution in ICC/IF, followed by Alexa Fluor 488[®] conjugated Goat Anti-Rabbit IgG (H+L). Counter-stained with DAPI.



Immunoprecipitation - Anti-BCG1 antibody (ab236592)

BCG1 was immunoprecipitated from 500 µg HepG2 (human liver hepatocellular carcinoma cell line) whole cell lysate with ab236592 at 1/200 dilution.

Lane 1: Rabbit control IgG IP in HepG2 whole cell lysate.

Lane 2: ab236592 IP in HepG2 whole cell lysate.

Lane 3: HepG2 whole cell lysate 20 µg (Input).

For western blotting, an HRP-conjugated Protein G antibody was used as the secondary antibody at 1/2000 dilution.

Please note: All products are "FOR RESEARCH USE ONLY. NOT FOR USE IN DIAGNOSTIC PROCEDURES"

Our Abpromise to you: Quality guaranteed and expert technical support

- Replacement or refund for products not performing as stated on the datasheet
- Valid for 12 months from date of delivery
- Response to your inquiry within 24 hours
- We provide support in Chinese, English, French, German, Japanese and Spanish
- Extensive multi-media technical resources to help you

- We investigate all quality concerns to ensure our products perform to the highest standards

If the product does not perform as described on this datasheet, we will offer a refund or replacement. For full details of the Abpromise, please visit <https://www.abcam.com/abpromise> or contact our technical team.

Terms and conditions

- Guarantee only valid for products bought direct from Abcam or one of our authorized distributors