

# Anti-Bcl-2 antibody ab196495

[507 References](#) [3 Images](#)

### Overview

---

<b>Product name</b>	Anti-Bcl-2 antibody
<b>Description</b>	Rabbit polyclonal to Bcl-2
<b>Host species</b>	Rabbit
<b>Tested applications</b>	<b>Suitable for:</b> IHC-P, WB, ICC/IF
<b>Species reactivity</b>	<b>Reacts with:</b> Mouse, Rat, Human
<b>Immunogen</b>	Recombinant fragment corresponding to Human Bcl-2. (Near N terminal). Database link: <a href="#">P10415</a>
<b>Positive control</b>	ICC/IF: HepG2. IHC-P: Human colon carcinoma. WB: HL-60 and MCF7 cell lysates, mouse brain, liver and lung tissue lysates.
<b>General notes</b>	<p>The Life Science industry has been in the grips of a reproducibility crisis for a number of years. Abcam is leading the way in addressing this with our range of recombinant monoclonal antibodies and knockout edited cell lines for gold-standard validation. Please check that this product meets your needs before purchasing.</p> <p>If you have any questions, special requirements or concerns, please send us an inquiry and/or contact our Support team ahead of purchase. Recommended alternatives for this product can be found below, along with publications, customer reviews and Q&amp;As</p>

### Properties

---

<b>Form</b>	Liquid
<b>Storage instructions</b>	Shipped at 4°C. Store at +4°C short term (1-2 weeks). Upon delivery aliquot. Store at -20°C long term. Avoid freeze / thaw cycle.
<b>Storage buffer</b>	pH: 7.40 Preservative: 0.02% Sodium azide Constituents: 50% Glycerol, 0.87% Sodium chloride, 49% PBS  PBS without Mg <sup>2+</sup> and Ca <sup>2+</sup> .
<b>Purity</b>	Immunogen affinity purified
<b>Clonality</b>	Polyclonal
<b>Isotype</b>	IgG

## Applications

**The Abpromise guarantee** Our **Abpromise guarantee** covers the use of ab196495 in the following tested applications.

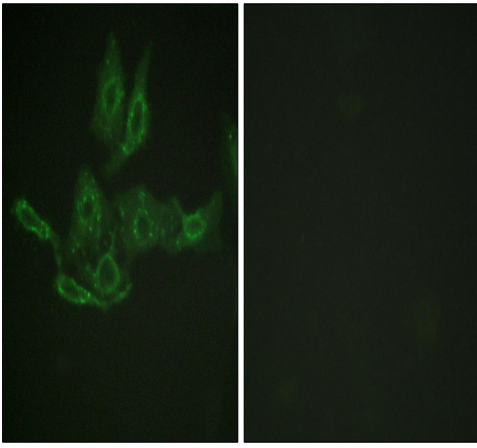
The application notes include recommended starting dilutions; optimal dilutions/concentrations should be determined by the end user.

Application	Abreviews	Notes
IHC-P		1/100 - 1/300. Perform heat mediated antigen retrieval before commencing with IHC staining protocol.
WB		1/500 - 1/2000. Predicted molecular weight: 26 kDa. Primary antibody incubation at 4°C overnight.
ICC/IF		1/200 - 1/1000.

## Target

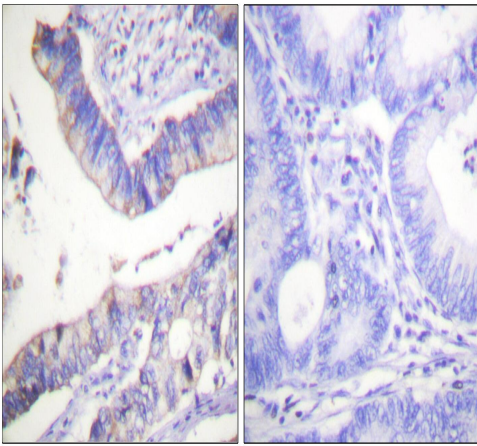
<b>Function</b>	Suppresses apoptosis in a variety of cell systems including factor-dependent lymphohematopoietic and neural cells. Regulates cell death by controlling the mitochondrial membrane permeability. Appears to function in a feedback loop system with caspases. Inhibits caspase activity either by preventing the release of cytochrome c from the mitochondria and/or by binding to the apoptosis-activating factor (APAF-1). May attenuate inflammation by impairing NLRP1-inflammasome activation, hence CASP1 activation and IL1B release (PubMed:17418785).
<b>Tissue specificity</b>	Expressed in a variety of tissues.
<b>Involvement in disease</b>	A chromosomal aberration involving BCL2 has been found in chronic lymphatic leukemia. Translocation t(14;18)(q32;q21) with immunoglobulin gene regions. BCL2 mutations found in non-Hodgkin lymphomas carrying the chromosomal translocation could be attributed to the Ig somatic hypermutation mechanism resulting in nucleotide transitions.
<b>Sequence similarities</b>	Belongs to the Bcl-2 family.
<b>Domain</b>	BH1 and BH2 domains are required for the interaction with BAX and for anti-apoptotic activity. The BH4 motif is required for anti-apoptotic activity and for interaction with RAF1 and EGLN3. The loop between motifs BH4 and BH3 is required for the interaction with NLRP1.
<b>Post-translational modifications</b>	Phosphorylation/dephosphorylation on Ser-70 regulates anti-apoptotic activity. Growth factor-stimulated phosphorylation on Ser-70 by PKC is required for the anti-apoptosis activity and occurs during the G2/M phase of the cell cycle. In the absence of growth factors, BCL2 appears to be phosphorylated by other protein kinases such as ERKs and stress-activated kinases. Phosphorylated by MAPK8/JNK1 at Thr-69, Ser-70 and Ser-87, wich stimulates starvation-induced autophagy. Dephosphorylated by protein phosphatase 2A (PP2A). Proteolytically cleaved by caspases during apoptosis. The cleaved protein, lacking the BH4 motif, has pro-apoptotic activity, causes the release of cytochrome c into the cytosol promoting further caspase activity. Monoubiquitinated by PARK2, leading to increase its stability. Ubiquitinated by SCF(FBXO10), leading to its degradation by the proteasome.
<b>Cellular localization</b>	Mitochondrion outer membrane. Nucleus membrane. Endoplasmic reticulum membrane.

## Images



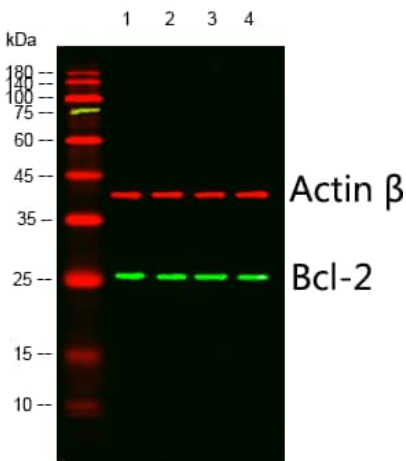
Immunocytochemistry/ Immunofluorescence - Anti-Bcl-2 antibody (ab196495)

Immunofluorescence analysis of HepG2 cells, using ab196495. The picture on the right is blocked with the synthesized peptide.



Immunohistochemistry (Formalin/PFA-fixed paraffin-embedded sections) - Anti-Bcl-2 antibody (ab196495)

Immunohistochemistry analysis of paraffin-embedded human colon carcinoma tissue, using ab196495. The picture on the right is blocked with the synthesized peptide.



Western blot - Anti-Bcl-2 antibody (ab196495)

**All lanes** : Anti-Bcl-2 antibody (ab196495) at 1/1000 dilution (4° over night.)

- Lane 1** : Mouse liver
- Lane 2** : Mouse brain
- Lane 3** : Mouse lung
- Lane 4** : MCF-7 cells

**Secondary**

**All lanes** : Dylight 800 at 37°, 1 hour at 1/10000 dilution

**Predicted band size:** 26 kDa

Western Blot analysis of lysates - Green.

Loading control - Red:

Actin Beta Monoclonal Antibody diluted at 1:5000, 4° over night.

Dylight 680 secondary antibody, diluted at 1:10000, 37°, 1 hour.

**Please note:** All products are "FOR RESEARCH USE ONLY. NOT FOR USE IN DIAGNOSTIC PROCEDURES"

### **Our Abpromise to you: Quality guaranteed and expert technical support**

---

- Replacement or refund for products not performing as stated on the datasheet
- Valid for 12 months from date of delivery
- Response to your inquiry within 24 hours
  
- We provide support in Chinese, English, French, German, Japanese and Spanish
- Extensive multi-media technical resources to help you
- We investigate all quality concerns to ensure our products perform to the highest standards

If the product does not perform as described on this datasheet, we will offer a refund or replacement. For full details of the Abpromise, please visit <https://www.abcam.com/abpromise> or contact our technical team.

### **Terms and conditions**

---

- Guarantee only valid for products bought direct from Abcam or one of our authorized distributors