


Product datasheet

Anti-Bcl 7A antibody - C-terminal ab137362

[2 Images](#)

Overview

Product name	Anti-Bcl 7A antibody - C-terminal
Description	Rabbit polyclonal to Bcl 7A - C-terminal
Host species	Rabbit
Tested applications	Suitable for: WB, IHC-P
Species reactivity	Reacts with: Human Predicted to work with: Mouse 
Immunogen	Recombinant fragment, corresponding to a region within C-terminal amino acids 148-210 of Human Bcl 7A (Uniprot ID: Q4VC05).
Positive control	Recombinant Human Bcl 7A protein (ab131815) can be used as a positive control in WB. HeLa S3 whole cell lysate; Human oral CA cell line Ca922 xenograft tissue.
General notes	<p>The Life Science industry has been in the grips of a reproducibility crisis for a number of years. Abcam is leading the way in addressing this with our range of recombinant monoclonal antibodies and knockout edited cell lines for gold-standard validation. Please check that this product meets your needs before purchasing.</p> <p>If you have any questions, special requirements or concerns, please send us an inquiry and/or contact our Support team ahead of purchase. Recommended alternatives for this product can be found below, along with publications, customer reviews and Q&As</p>

Properties

Form	Liquid
Storage instructions	Shipped at 4°C. Upon delivery aliquot. Store at -20°C or -80°C. Avoid freeze / thaw cycle.
Storage buffer	pH: 7.00 Preservative: 0.01% Thimerosal (merthiolate) Constituents: 79.99% PBS, 20% Glycerol (glycerin, glycerine)
Purity	Immunogen affinity purified
Clonality	Polyclonal
Isotype	IgG

Applications

The Abpromise guarantee

Our **Abpromise guarantee** covers the use of ab137362 in the following tested applications.

The application notes include recommended starting dilutions; optimal dilutions/concentrations should be determined by the end user.

Application	Abreviews	Notes
WB		1/500 - 1/3000. Predicted molecular weight: 23 kDa.
IHC-P		1/100 - 1/1000. Perform heat mediated antigen retrieval with citrate buffer pH 6 before commencing with IHC staining protocol. Antigen retrieval using heat mediated Tris-EDTA buffer (pH8.0) is also possible.

Target

Involvement in disease

Note=Chromosomal aberrations involving BCL7A may be a cause of B-cell non-Hodgkin lymphoma. Three-way translocation t(8;14;12)(q24.1;q32.3;q24.1) with MYC and with immunoglobulin gene regions.

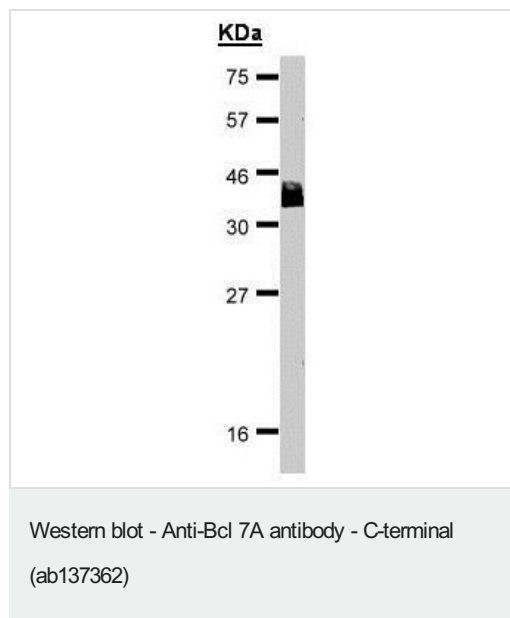
Sequence similarities

Belongs to the BCL7 family.

Post-translational modifications

Phosphorylated upon DNA damage, probably by ATM or ATR.

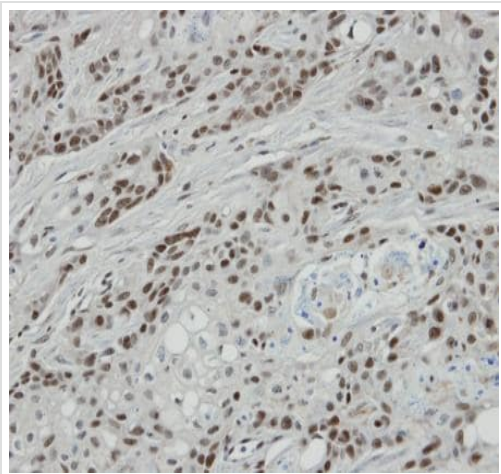
Images



Anti-Bcl 7A antibody - C-terminal (ab137362) at 1/1000 dilution + HeLa S3 cell lysate at 30 µg

Predicted band size: 23 kDa

15% SDS PAGE



Immunohistochemical analysis of paraffin-embedded Human oral CA cell line Ca922 xenograft labelling Bcl 7A with ab137362 at 1/100 dilution.

Immunohistochemistry (Formalin/PFA-fixed paraffin-embedded sections) - Anti-Bcl 7A antibody - C-terminal (ab137362)

Please note: All products are "FOR RESEARCH USE ONLY. NOT FOR USE IN DIAGNOSTIC PROCEDURES"

Our Abpromise to you: Quality guaranteed and expert technical support

- Replacement or refund for products not performing as stated on the datasheet
- Valid for 12 months from date of delivery
- Response to your inquiry within 24 hours
- We provide support in Chinese, English, French, German, Japanese and Spanish
- Extensive multi-media technical resources to help you
- We investigate all quality concerns to ensure our products perform to the highest standards

If the product does not perform as described on this datasheet, we will offer a refund or replacement. For full details of the Abpromise, please visit <https://www.abcam.com/abpromise> or contact our technical team.

Terms and conditions

- Guarantee only valid for products bought direct from Abcam or one of our authorized distributors