



Product datasheet

Anti-Bcl-XL antibody [BX006 + 2H12] - N-terminal ab201335

[2 References](#) [2 Images](#)

Overview

Product name	Anti-Bcl-XL antibody [BX006 + 2H12] - N-terminal
Description	Mouse monoclonal [BX006 + 2H12] to Bcl-XL - N-terminal
Host species	Mouse
Tested applications	Suitable for: WB, IHC-P
Species reactivity	Reacts with: Human
Immunogen	Synthetic peptide corresponding to Human Bcl-XL aa 1-100 (N terminal) (Cysteine residue). Database link: Q07817-1
	 Run BLAST with  Run BLAST with
Positive control	WB: Jurkat cells; IHC: Hodgkin's lymphoma.
General notes	<p>The Life Science industry has been in the grips of a reproducibility crisis for a number of years. Abcam is leading the way in addressing this with our range of recombinant monoclonal antibodies and knockout edited cell lines for gold-standard validation. Please check that this product meets your needs before purchasing.</p> <p>If you have any questions, special requirements or concerns, please send us an inquiry and/or contact our Support team ahead of purchase. Recommended alternatives for this product can be found below, along with publications, customer reviews and Q&As</p> <p>Please note that this antibody is an oligoclonal antibody. It is a cocktail of monoclonal antibodies that have been carefully selected. Oligoclonal antibodies have not only the specificity and batch-to-batch consistency of a monoclonal antibody, but also have the advantage of the sensitivity of a polyclonal antibody due to their ability to recognize multiple epitopes on an antigen.</p>

Properties

Form	Liquid
Storage instructions	Shipped at 4°C. Store at +4°C short term (1-2 weeks). Upon delivery aliquot. Store at -20°C long term. Avoid freeze / thaw cycle.
Storage buffer	pH: 7.2 Preservative: 0.05% Sodium azide Constituents: 0.05% BSA, 99% PBS

Purity	Protein A/G purified
Purification notes	Purified from Bioreactor Concentrate.
Clonality	Monoclonal
Clone number	BX006 + 2H12
Isotype	IgG2a

Applications

The Abpromise guarantee Our **Abpromise guarantee** covers the use of ab201335 in the following tested applications.

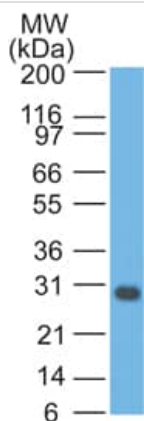
The application notes include recommended starting dilutions; optimal dilutions/concentrations should be determined by the end user.

Application	Abreviews	Notes
WB		Use a concentration of 1 - 2 µg/ml. Predicted molecular weight: 26 kDa.
IHC-P		Use a concentration of 1 - 2 µg/ml. Staining of formalin-fixed tissues requires boiling tissue sections in 1mM EDTA buffer, pH 7.5-8.5, for 10-20 min followed by cooling at RT for 20 minutes.

Target

Function	Potent inhibitor of cell death. Inhibits activation of caspases (By similarity). Appears to regulate cell death by blocking the voltage-dependent anion channel (VDAC) by binding to it and preventing the release of the caspase activator, CYC1, from the mitochondrial membrane. Isoform Bcl-X(S) promotes apoptosis.
Tissue specificity	Bcl-X(S) is expressed at high levels in cells that undergo a high rate of turnover, such as developing lymphocytes. In contrast, Bcl-X(L) is found in tissues containing long-lived postmitotic cells, such as adult brain.
Sequence similarities	Belongs to the Bcl-2 family.
Domain	The BH4 motif is required for anti-apoptotic activity. The BH1 and BH2 motifs are required for both heterodimerization with other Bcl-2 family members and for repression of cell death.
Post-translational modifications	Proteolytically cleaved by caspases during apoptosis. The cleaved protein, lacking the BH4 motif, has pro-apoptotic activity.
Cellular localization	Mitochondrion membrane. Nucleus membrane. Mitochondrial membranes and perinuclear envelope.

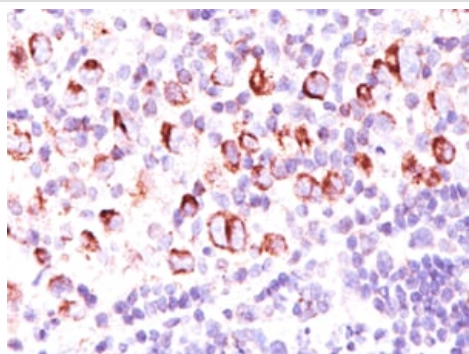
Images



Anti-Bcl-XL antibody [BX006 + 2H12] - N-terminal (ab201335) at 1 µg/ml + Jurkat cell lysate

Predicted band size: 26 kDa

Western blot - Anti-Bcl-XL antibody [BX006 + 2H12]
- N-terminal (ab201335)



Immunohistochemical analysis of formalin-fixed, paraffin-embedded Human Hodgkin's lymphoma tissue labeling Bcl XL with ab201335 at 1 µg/ml.

Immunohistochemistry (Formalin/PFA-fixed paraffin-embedded sections) - Anti-Bcl-XL antibody [BX006 + 2H12] - N-terminal (ab201335)

Please note: All products are "FOR RESEARCH USE ONLY. NOT FOR USE IN DIAGNOSTIC PROCEDURES"

Our Abpromise to you: Quality guaranteed and expert technical support

- Replacement or refund for products not performing as stated on the datasheet
- Valid for 12 months from date of delivery
- Response to your inquiry within 24 hours
- We provide support in Chinese, English, French, German, Japanese and Spanish
- Extensive multi-media technical resources to help you
- We investigate all quality concerns to ensure our products perform to the highest standards

If the product does not perform as described on this datasheet, we will offer a refund or replacement. For full details of the Abpromise,

please visit <https://www.abcam.com/abpromise> or contact our technical team.

Terms and conditions

- Guarantee only valid for products bought direct from Abcam or one of our authorized distributors