


## Product datasheet

### Anti-Bcl10 antibody ab227206

★★★★★ [1 Abreviews](#) [7 Images](#)

#### Overview

<b>Product name</b>	Anti-Bcl10 antibody
<b>Description</b>	Rabbit polyclonal to Bcl10
<b>Host species</b>	Rabbit
<b>Tested applications</b>	<b>Suitable for:</b> IHC-P, WB, ICC/IF, IP
<b>Species reactivity</b>	<b>Reacts with:</b> Mouse, Human <b>Predicted to work with:</b> Rat, Cow, Pig, Rhesus monkey 
<b>Immunogen</b>	Recombinant fragment within Human Bcl10 (internal sequence). The exact sequence is proprietary. Database link: <a href="#">O95999</a>
<b>Positive control</b>	WB: HeLa cell extract; Raji, Neuro-2a, GL261 and C8D30 whole cell lysates. IP: Raji whole cell extract. IHC-P: Human gastric cancer tissue. ICC/IF: HeLa cells.
<b>General notes</b>	<p>The Life Science industry has been in the grips of a reproducibility crisis for a number of years. Abcam is leading the way in addressing this with our range of recombinant monoclonal antibodies and knockout edited cell lines for gold-standard validation. Please check that this product meets your needs before purchasing.</p> <p>If you have any questions, special requirements or concerns, please send us an inquiry and/or contact our Support team ahead of purchase. Recommended alternatives for this product can be found below, along with publications, customer reviews and Q&amp;As</p>

#### Properties

<b>Form</b>	Liquid
<b>Storage instructions</b>	Shipped at 4°C. Store at +4°C short term (1-2 weeks). Upon delivery aliquot. Store at -20°C long term. Avoid freeze / thaw cycle.
<b>Storage buffer</b>	pH: 7.00 Preservative: 0.01% Thimerosal (merthiolate) Constituents: 78.99% PBS, 1% BSA, 20% Glycerol (glycerin, glycerine)
<b>Purity</b>	Immunogen affinity purified
<b>Clonality</b>	Polyclonal
<b>Isotype</b>	IgG

## Applications

### The Abpromise guarantee

Our **Abpromise guarantee** covers the use of ab227206 in the following tested applications.

The application notes include recommended starting dilutions; optimal dilutions/concentrations should be determined by the end user.

Application	Abreviews	Notes
IHC-P		1/100 - 1/1000.
WB		1/500 - 1/3000. Predicted molecular weight: 26 kDa.
ICC/IF		1/100 - 1/1000.
IP		1/100 - 1/500.

## Target

### Function

Promotes apoptosis, pro-caspase-9 maturation and activation of NF-kappa-B via NIK and IKK. May be an adapter protein between upstream TNFR1-TRADD-RIP complex and the downstream NIK-IKK-IKAP complex. Is a substrate for MALT1.

### Tissue specificity

Ubiquitous.

### Involvement in disease

Note=A chromosomal aberration involving BCL10 is recurrent in low-grade mucosa-associated lymphoid tissue (MALT lymphoma). Translocation t(1;14)(p22;q32). Although the BCL10/IgH translocation leaves the coding region of BCL10 intact, frequent BCL10 mutations could be attributed to the Ig somatic hypermutation mechanism resulting in nucleotide transitions. Note=Defects in BCL10 are involved in various types of cancer.

### Sequence similarities

Contains 1 CARD domain.

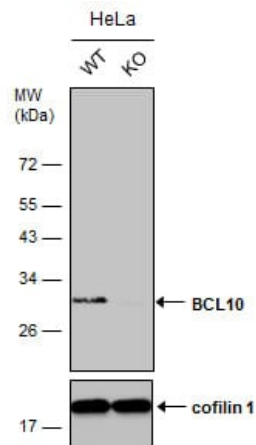
### Post-translational modifications

Phosphorylated. Phosphorylation results in dissociation from TRAF2 and binding to BIRC2/c-IAP2.

### Cellular localization

Cytoplasm > perinuclear region. Membrane raft. Appears to have a perinuclear, compact and filamentous pattern of expression. Also found in the nucleus of several types of tumor cells. Colocalized with DPP4 in membrane rafts.

## Images



Western blot - Anti-Bcl10 antibody (ab227206)

**All lanes :** Anti-Bcl10 antibody (ab227206) at 1/2500 dilution

**Lane 1 :** WT HeLa cell extract

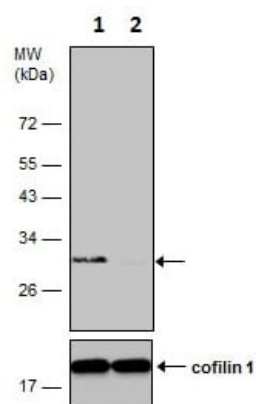
**Lane 2 :** Bcl10 Knockout HeLa cell extracts

Lysates/proteins at 30 µg per lane.

#### Secondary

**All lanes :** HRP-conjugated anti-rabbit IgG

**Predicted band size:** 26 kDa



Western blot - Anti-Bcl10 antibody (ab227206)

**All lanes :** Anti-Bcl10 antibody (ab227206) at 1/2500 dilution

**Lane 1 :** Wild-type HeLa (human epithelial cell line from cervix adenocarcinoma) cell extract

**Lane 2 :** Bcl10 knockout HeLa cell extract

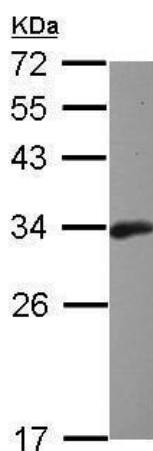
Lysates/proteins at 30 µg per lane.

#### Secondary

**All lanes :** HRP-conjugated anti-rabbit IgG

**Predicted band size:** 26 kDa

12% SDS-PAGE gel.

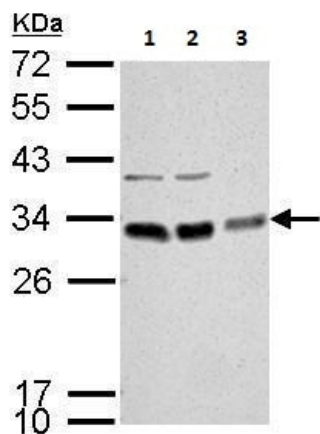


Western blot - Anti-Bcl10 antibody (ab227206)

Anti-Bcl10 antibody (ab227206) at 1/1000 dilution + Raji (human Burkitt's lymphoma cell line) whole cell lysate at 30 µg

**Predicted band size:** 26 kDa

12% SDS PAGE gel.



Western blot - Anti-Bcl10 antibody (ab227206)

**All lanes** : Anti-Bcl10 antibody (ab227206) at 1/1000 dilution

**Lane 1** : Neuro-2a (mouse neuroblastoma cell line) whole cell lysate

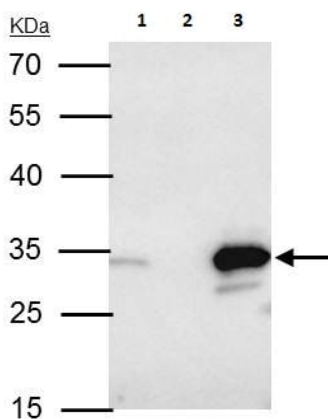
**Lane 2** : GL261 whole cell lysate

**Lane 3** : C8D30 whole cell lysate

Lysates/proteins at 30 µg per lane.

**Predicted band size:** 26 kDa

12 % SDS-PAGE gel.



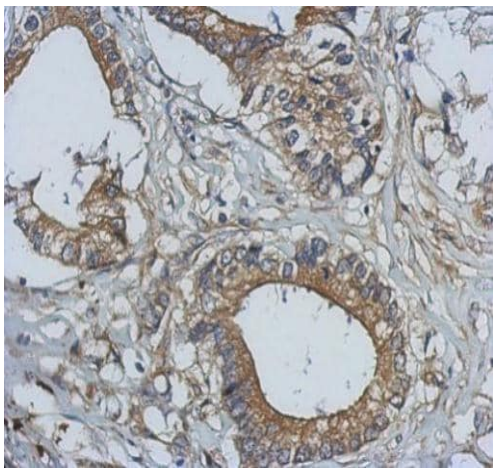
Immunoprecipitation - Anti-Bcl10 antibody  
(ab227206)

Bcl10 was immunoprecipitated from Raji (human Burkitt's lymphoma cell line) whole cell extract with 4 µg ab227206. Western blot was performed from the immunoprecipitate using ab227206 at 1/500 dilution. Anti-rabbit IgG was used as a secondary reagent

Lane 1: Raji whole cell extract 40 µg (Input).

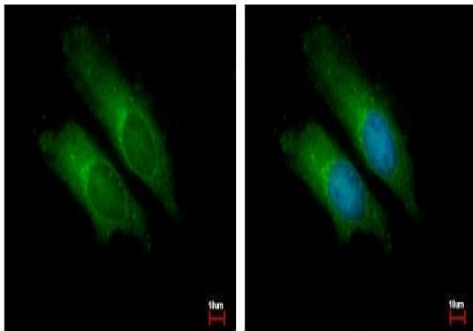
Lane 2: Control IP in Raji whole cell extract with 4 µg of preimmune Rabbit IgG.

Lane 3: ab227206 IP in Raji whole cell extract.



Immunohistochemistry (Formalin/PFA-fixed paraffin-embedded sections) - Anti-Bcl10 antibody (ab227206)

Paraffin-embedded human gastric cancer tissue stained for Bcl10 using ab227206 at 1/500 dilution in immunohistochemical analysis.



Immunocytochemistry/ Immunofluorescence - Anti-Bcl10 antibody (ab227206)

2% paraformaldehyde-fixed HeLa (human epithelial cell line from cervix adenocarcinoma) cells stained for Bcl10 (green) using ab227206 at 1/500 dilution in ICC/IF.

Blue: Hoechst 33342 staining.

**Please note:** All products are "FOR RESEARCH USE ONLY. NOT FOR USE IN DIAGNOSTIC PROCEDURES"

### Our Abpromise to you: Quality guaranteed and expert technical support

- Replacement or refund for products not performing as stated on the datasheet
- Valid for 12 months from date of delivery
- Response to your inquiry within 24 hours
- We provide support in Chinese, English, French, German, Japanese and Spanish
- Extensive multi-media technical resources to help you
- We investigate all quality concerns to ensure our products perform to the highest standards

If the product does not perform as described on this datasheet, we will offer a refund or replacement. For full details of the Abpromise, please visit <https://www.abcam.com/abpromise> or contact our technical team.

### Terms and conditions

- 
- Guarantee only valid for products bought direct from Abcam or one of our authorized distributors