

## Product datasheet

### Anti-Bcl10 antibody [EPR8587] ab150380

KO VALIDATED

Recombinant

RabMAb

5 Images

#### Overview

Product name	Anti-Bcl10 antibody [EPR8587]
Description	Rabbit monoclonal [EPR8587] to Bcl10
Host species	Rabbit
Tested applications	<b>Suitable for:</b> WB, IHC-P <b>Unsuitable for:</b> Flow Cyt
Species reactivity	<b>Reacts with:</b> Human
Immunogen	Recombinant fragment corresponding to Human Bcl10 aa 1-250.
Positive control	WB: Recombinant Human Bcl10 protein ( <a href="#">ab124575</a> ); Ramos, HeLa, HuT-78 and Raji cell lysates. IHC-P: Human MALT and tonsil tissues.
General notes	<p>This product is a recombinant monoclonal antibody, which offers several advantages including:</p> <ul style="list-style-type: none"> <li>- High batch-to-batch consistency and reproducibility</li> <li>- Improved sensitivity and specificity</li> <li>- Long-term security of supply</li> <li>- Animal-free production</li> </ul> <p>For more information <a href="#">see here</a>.</p> <p>Our RabMAb<sup>®</sup> technology is a patented hybridoma-based technology for making rabbit monoclonal antibodies. For details on our patents, please refer to <a href="#">RabMAb<sup>®</sup> patents</a>.</p> <p>Mouse, Rat: We have preliminary internal testing data to indicate this antibody may not react with these species. Please contact us for more information.</p>

#### Properties

Form	Liquid
Storage instructions	Shipped at 4°C. Upon delivery aliquot and store at -20°C. Avoid repeated freeze / thaw cycles.
Storage buffer	pH: 7.2 Preservative: 0.01% Sodium azide Constituents: 9% PBS, 40% Glycerol (glycerin, glycerine), 0.05% BSA, 50% Tissue culture supernatant
Purity	Protein A purified

<b>Clonality</b>	Monoclonal
<b>Clone number</b>	EPR8587
<b>Isotype</b>	IgG

## Applications

**The Abpromise guarantee** Our **Abpromise guarantee** covers the use of ab150380 in the following tested applications. The application notes include recommended starting dilutions; optimal dilutions/concentrations should be determined by the end user.

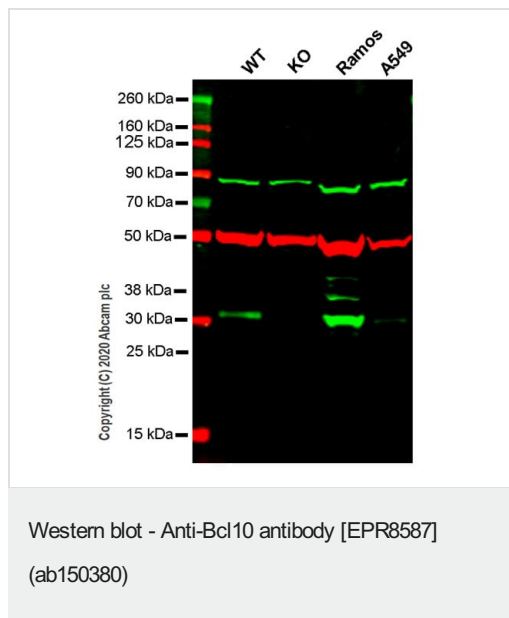
Application	Abreviews	Notes
<b>WB</b>		1/1000 - 1/10000. Predicted molecular weight: 26 kDa.
<b>IHC-P</b>		1/250 - 1/500. Perform heat mediated antigen retrieval with citrate buffer pH 6 before commencing with IHC staining protocol.

**Application notes** Is unsuitable for Flow Cyt.

## Target

<b>Function</b>	Promotes apoptosis, pro-caspase-9 maturation and activation of NF-kappa-B via NIK and IKK. May be an adapter protein between upstream TNFR1-TRADD-RIP complex and the downstream NIK-IKK-IKAP complex. Is a substrate for MALT1.
<b>Tissue specificity</b>	Ubiquitous.
<b>Involvement in disease</b>	Note=A chromosomal aberration involving BCL10 is recurrent in low-grade mucosa-associated lymphoid tissue (MALT lymphoma). Translocation t(1;14)(p22;q32). Although the BCL10/IgH translocation leaves the coding region of BCL10 intact, frequent BCL10 mutations could be attributed to the Ig somatic hypermutation mechanism resulting in nucleotide transitions. Note=Defects in BCL10 are involved in various types of cancer.
<b>Sequence similarities</b>	Contains 1 CARD domain.
<b>Post-translational modifications</b>	Phosphorylated. Phosphorylation results in dissociation from TRAF2 and binding to BIRC2/c-IAP2.
<b>Cellular localization</b>	Cytoplasm > perinuclear region. Membrane raft. Appears to have a perinuclear, compact and filamentous pattern of expression. Also found in the nucleus of several types of tumor cells. Colocalized with DPP4 in membrane rafts.

## Images



**All lanes :** Anti-Bcl10 antibody [EPR8587] (ab150380) at 1/1000 dilution

**Lane 1 :** Wild-type HeLa cell lysate

**Lane 2 :** BCL10 knockout HeLa cell lysate

**Lane 3 :** Ramos cell lysate

**Lane 4 :** A549 cell lysate

Lysates/proteins at 20 µg per lane.

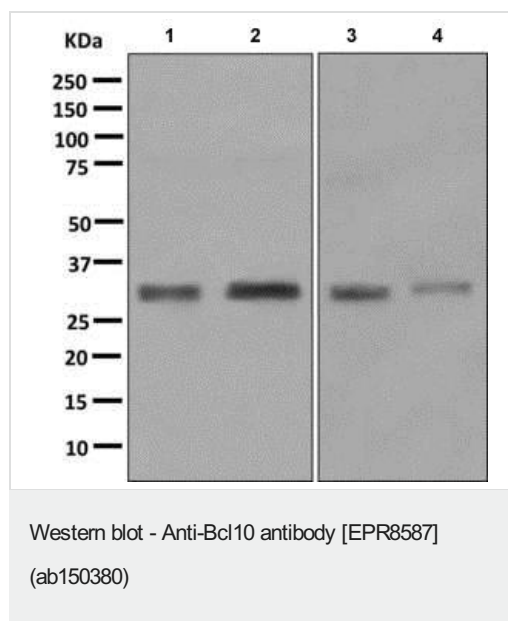
Performed under reducing conditions.

**Predicted band size:** 26 kDa

**Observed band size:** 32 kDa

**Lanes 1-4:** Merged signal (red and green). Green - ab150380 observed at 32 kDa. Red - loading control, [ab7291](#) observed at 52 kDa.

ab150380 Anti-Bcl10 antibody [EPR8587] was shown to specifically react with Bcl10 in wild-type HeLa cells. Loss of signal was observed when knockout cell line [ab261797](#) (knockout cell lysate [ab257144](#)) was used. Wild-type and Bcl10 knockout samples were subjected to SDS-PAGE. ab150380 and Anti-alpha Tubulin antibody [DM1A] - Loading Control ([ab7291](#)) were incubated overnight at 4°C at 1 in 1000 dilution and 1 in 20000 dilution respectively. Blots were developed with Goat anti-Rabbit IgG H&L (IRDye® 800CW) preadsorbed ([ab216773](#)) and Goat anti-Mouse IgG H&L (IRDye® 680RD) preadsorbed ([ab216776](#)) secondary antibodies at 1 in 10000 dilution for 1 hour at room temperature before imaging.



**All lanes** : Anti-Bcl10 antibody [EPR8587] (ab150380) at 1/1000 dilution

**Lane 1** : Ramos cell lysate

**Lane 2** : HeLa cell lysate

**Lane 3** : HuT-78 cell lysate

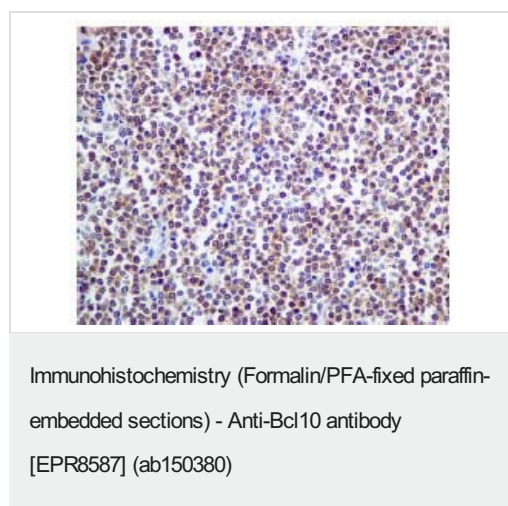
**Lane 4** : Raji cell lysate

Lysates/proteins at 10 µg per lane.

#### Secondary

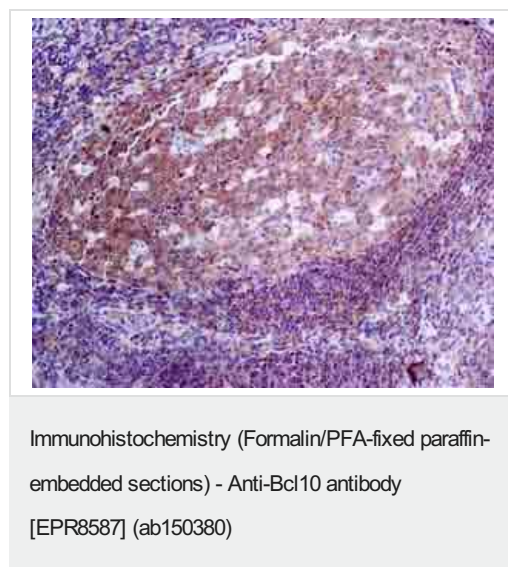
**All lanes** : HRP labeled goat anti-rabbit antibody at 1/2000 dilution

**Predicted band size:** 26 kDa



Immunohistochemical analysis of paraffin embedded Human MALT tissue labeling Bcl10 with ab150380 at a 1/250 dilution.

Perform heat mediated antigen retrieval with citrate buffer pH 6 before commencing with IHC staining protocol.



Immunohistochemical analysis of paraffin embedded Human tonsil tissue labeling Bcl10 with ab150380 at a 1/250 dilution.

Perform heat mediated antigen retrieval with citrate buffer pH 6 before commencing with IHC staining protocol.

### Why choose a recombinant antibody?



**Research with confidence**  
Consistent and reproducible results



**Long-term and scalable supply**  
Recombinant technology



**Success from the first experiment**  
Confirmed specificity



**Ethical standards compliant**  
Animal-free production

Anti-Bcl10 antibody [EPR8587] (ab150380)

**Please note:** All products are "FOR RESEARCH USE ONLY. NOT FOR USE IN DIAGNOSTIC PROCEDURES"

### Our Abpromise to you: Quality guaranteed and expert technical support

---

- Replacement or refund for products not performing as stated on the datasheet
- Valid for 12 months from date of delivery
- Response to your inquiry within 24 hours
- We provide support in Chinese, English, French, German, Japanese and Spanish
- Extensive multi-media technical resources to help you
- We investigate all quality concerns to ensure our products perform to the highest standards

If the product does not perform as described on this datasheet, we will offer a refund or replacement. For full details of the Abpromise, please visit <https://www.abcam.com/abpromise> or contact our technical team.

### Terms and conditions

---

- Guarantee only valid for products bought direct from Abcam or one of our authorized distributors