



Product datasheet

Anti-BCL2L10 antibody [8A2F9] ab233641

6 Images

Overview

Product name	Anti-BCL2L10 antibody [8A2F9]
Description	Mouse monoclonal [8A2F9] to BCL2L10
Host species	Mouse
Tested applications	Suitable for: WB, IHC-P, Flow Cyt, ICC/IF
Species reactivity	Reacts with: Human
Immunogen	Recombinant fragment corresponding to Human BCL2L10 aa 1 to the C-terminus. (Expressed in E.coli). Database link: Q9HD36
	 Run BLAST with  Run BLAST with
Positive control	WB: BCL2L10 (aa 31-186)-hlgGfC transfected HEK-293 cell lysate; Human BCL2L10 (aa 31-186) recombinant protein. ICC/IF: HeLa cells. Flow Cyt: HeLa cells. IHC-P: Human lung cancer and cervical cancer tissues.
General notes	<p>The Life Science industry has been in the grips of a reproducibility crisis for a number of years. Abcam is leading the way in addressing this with our range of recombinant monoclonal antibodies and knockout edited cell lines for gold-standard validation. Please check that this product meets your needs before purchasing.</p> <p>If you have any questions, special requirements or concerns, please send us an inquiry and/or contact our Support team ahead of purchase. Recommended alternatives for this product can be found below, along with publications, customer reviews and Q&As</p>

Properties

Form	Liquid
Storage instructions	Shipped at 4°C. Store at +4°C short term (1-2 weeks). Upon delivery aliquot. Store at -20°C long term. Avoid freeze / thaw cycle.
Storage buffer	Preservative: 0.05% Sodium azide Constituent: PBS
Purity	Protein G purified
Clonality	Monoclonal
Clone number	8A2F9
Isotype	IgG1

Applications

The Abpromise guarantee Our **Abpromise guarantee** covers the use of ab233641 in the following tested applications.

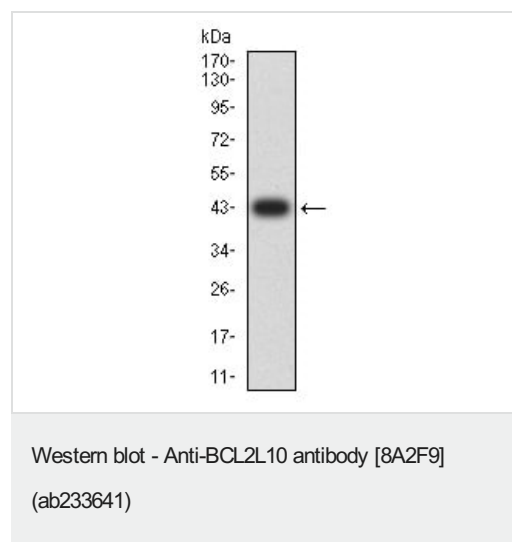
The application notes include recommended starting dilutions; optimal dilutions/concentrations should be determined by the end user.

Application	Abreviews	Notes
WB		1/500 - 1/2000. Predicted molecular weight: 22 kDa.
IHC-P		1/200 - 1/1000.
Flow Cyt		1/200 - 1/400.
ICC/IF		1/200 - 1/1000.

Target

Function	Promotes cell survival. Suppresses apoptosis induced by BAX but not BAK.
Tissue specificity	Widely expressed in adult tissues. Preferentially expressed in lung, liver and kidney.
Sequence similarities	Belongs to the Bcl-2 family.
Cellular localization	Mitochondrion. Nucleus membrane.

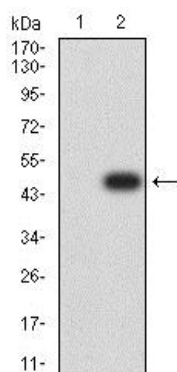
Images



Anti-BCL2L10 antibody [8A2F9] (ab233641) at 1/500 dilution +
Human BCL2L10 (aa 31-186) recombinant protein

Predicted band size: 22 kDa

Expected MW is 43.1 kDa.



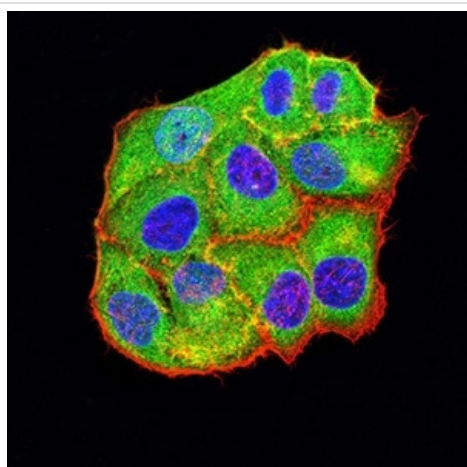
Western blot - Anti-BCL2L10 antibody [8A2F9] (ab233641)

All lanes : Anti-BCL2L10 antibody [8A2F9] (ab233641) at 1/500 dilution

Lane 1 : HEK-293 (human epithelial cell line from embryonic kidney) cell lysate

Lane 2 : BCL2L10 (aa 31-186)-hlgGfc transfected HEK-293 cell lysate

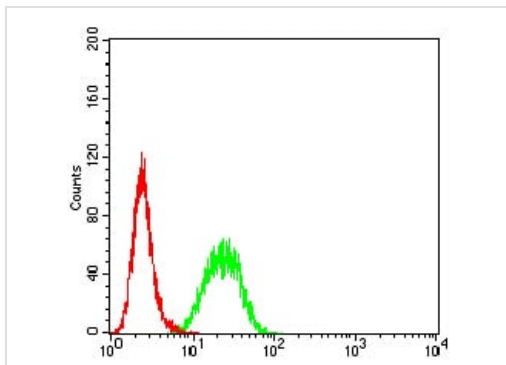
Predicted band size: 22 kDa



Immunocytochemistry/ Immunofluorescence - Anti-BCL2L10 antibody [8A2F9] (ab233641)

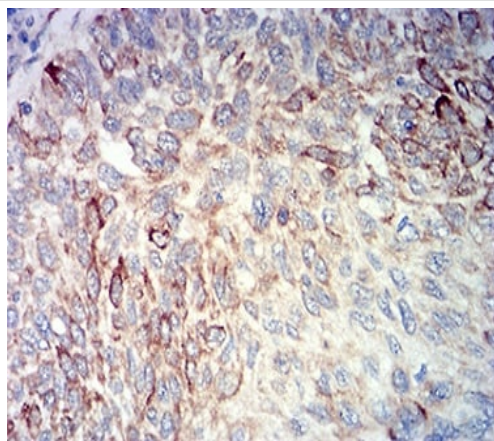
HeLa (human epithelial cell line from cervix adenocarcinoma) cells stained for BCL2L10 (green) using ab233641 at 1/200 dilution in ICC/IF.

Blue: DRAQ5 fluorescent DNA dye. Red: Actin filaments have been labeled with Alexa Fluor-555 phalloidin.



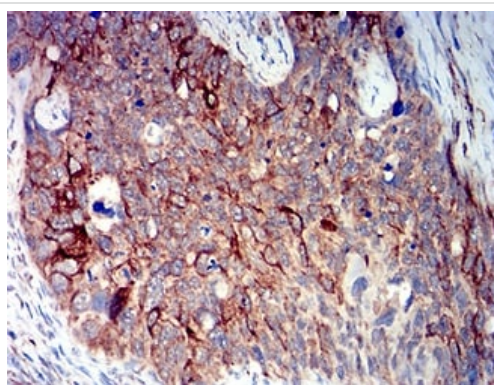
Flow Cytometry - Anti-BCL2L10 antibody [8A2F9]
(ab233641)

Flow cytometric analysis of HeLa (human epithelial cell line from cervix adenocarcinoma) cell line labeling BCL2L10 with ab233641 at 1/200 dilution (green) compared with a negative control (red).



Immunohistochemistry (Formalin/PFA-fixed paraffin-embedded sections) - Anti-BCL2L10 antibody [8A2F9] (ab233641)

Paraffin-embedded human lung cancer tissue stained for BCL2L10 using ab233641 at 1/200 dilution in immunohistochemical analysis.



Immunohistochemistry (Formalin/PFA-fixed paraffin-embedded sections) - Anti-BCL2L10 antibody [8A2F9] (ab233641)

Paraffin-embedded human cervical cancer tissue stained for BCL2L10 using ab233641 at 1/200 dilution in immunohistochemical analysis.

Please note: All products are "FOR RESEARCH USE ONLY. NOT FOR USE IN DIAGNOSTIC PROCEDURES"

Our Abpromise to you: Quality guaranteed and expert technical support

- Replacement or refund for products not performing as stated on the datasheet
- Valid for 12 months from date of delivery
- Response to your inquiry within 24 hours

- We provide support in Chinese, English, French, German, Japanese and Spanish
- Extensive multi-media technical resources to help you
- We investigate all quality concerns to ensure our products perform to the highest standards

If the product does not perform as described on this datasheet, we will offer a refund or replacement. For full details of the Abpromise, please visit <https://www.abcam.com/abpromise> or contact our technical team.

Terms and conditions

- Guarantee only valid for products bought direct from Abcam or one of our authorized distributors