

Anti-Bcl3 antibody ab27780

★☆☆☆☆ [2 Abreviews](#) [2 References](#) [1 Image](#)

Overview

Product name	Anti-Bcl3 antibody
Description	Rabbit polyclonal to Bcl3
Host species	Rabbit
Tested applications	Suitable for: WB
Species reactivity	Reacts with: Human
Immunogen	Synthetic peptide corresponding to Human Bcl3. Synthetic peptide surrounding amino acid 424 of human Bcl-3 Database link: P20749
Positive control	WB: Jurkat
General notes	<p>This product is manufactured by BioVision, an Abcam company and was previously called 3407 Bcl-3 Antibody. 3407-100 is the same size as the 100 µg size of ab27780.</p> <p>The Life Science industry has been in the grips of a reproducibility crisis for a number of years. Abcam is leading the way in addressing this with our range of recombinant monoclonal antibodies and knockout edited cell lines for gold-standard validation. Please check that this product meets your needs before purchasing.</p> <p>If you have any questions, special requirements or concerns, please send us an inquiry and/or contact our Support team ahead of purchase. Recommended alternatives for this product can be found below, along with publications, customer reviews and Q&As</p>

Properties

Form	Liquid
Storage instructions	Shipped at 4°C. Store at +4°C short term (1-2 weeks). Upon delivery aliquot. Store at -20°C. Avoid freeze / thaw cycle.
Storage buffer	pH: 7.2 Preservative: 0.01% Thimerosal (merthiolate) Constituents: 30% Glycerol (glycerin, glycerine), 0.5% BSA, 69% PBS
Purity	Protein G purified
Purification notes	Affinity purified
Clonality	Polyclonal

Isotype

IgG

Applications

The Abpromise guarantee

Our **Abpromise guarantee** covers the use of ab27780 in the following tested applications.

The application notes include recommended starting dilutions; optimal dilutions/concentrations should be determined by the end user.

Application	Abreviews	Notes
WB	★☆☆☆☆ (1)	Use a concentration of 1 - 4 µg/ml. Detects a band of approximately 60 kDa (predicted molecular weight: 47 kDa).

Target

Function

Contributes to the regulation of transcriptional activation of NF-kappa-B target genes. In the cytoplasm, inhibits the nuclear translocation of the NF-kappa-B p50 subunit. In the nucleus, acts as transcriptional activator that promotes transcription of NF-kappa-B target genes. Contributes to the regulation of cell proliferation.

Involvement in disease

Note=A chromosomal aberration involving BCL3 may be a cause of B-cell chronic lymphocytic leukemia (B-CLL). Translocation t(14;19)(q32;q13.1) with immunoglobulin gene regions.

Sequence similarities

Contains 7 ANK repeats.

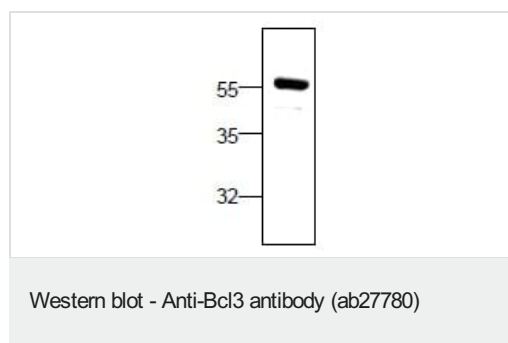
Post-translational modifications

Polyubiquitinated. Ubiquitination via 'Lys-63'-linked ubiquitin chains is required for nuclear accumulation. Deubiquitinated by CYLD, which acts on 'Lys-63'-linked ubiquitin chains. Deubiquitination by CYLD prevents nuclear accumulation. Activated by phosphorylation.

Cellular localization

Nucleus. Cytoplasm. Cytoplasm > perinuclear region. Ubiquitination via 'Lys-63'-linked ubiquitin chains is required for nuclear accumulation.

Images



Anti-Bcl3 antibody (ab27780) at 2 µg/ml + Jurkat

Predicted band size: 47 kDa

Please note: All products are "FOR RESEARCH USE ONLY. NOT FOR USE IN DIAGNOSTIC PROCEDURES"

Our Abpromise to you: Quality guaranteed and expert technical support

- Replacement or refund for products not performing as stated on the datasheet

- Valid for 12 months from date of delivery
- Response to your inquiry within 24 hours
- We provide support in Chinese, English, French, German, Japanese and Spanish
- Extensive multi-media technical resources to help you
- We investigate all quality concerns to ensure our products perform to the highest standards

If the product does not perform as described on this datasheet, we will offer a refund or replacement. For full details of the Abpromise, please visit <https://www.abcam.com/abpromise> or contact our technical team.

Terms and conditions

- Guarantee only valid for products bought direct from Abcam or one of our authorized distributors