

## Product datasheet

### Anti-Bcl6 antibody [EPR11410-43] $\alpha$ b172610

Recombinant RabMAb

★★★★★ 3 Abreviews 9 References 8 Images

#### Overview

Product name	Anti-Bcl6 antibody [EPR11410-43]
Description	Rabbit monoclonal [EPR11410-43] to Bcl6
Host species	Rabbit
Specificity	We tested the antibody in mouse and rat samples and tests were unsuccessful therefore we can no longer guaranteed the reactivity of this species.
Tested applications	<b>Suitable for:</b> WB, IHC-P <b>Unsuitable for:</b> Flow Cyt, ICC/IF or IP
Species reactivity	<b>Reacts with:</b> Human
Immunogen	Recombinant fragment within Human bcl-6 aa 1 to the C-terminus. The exact sequence is proprietary. Database link: <a href="#">P41182</a>
Positive control	Ramos, Daudi and Raji cell lysates; Human lymph node, tonsil and B cell lymphoma tissues; Ramos cells.
General notes	We tested the antibody in mouse and rat samples and tests were unsuccessful therefore we can no longer guaranteed the reactivity of this species.  This product is a recombinant monoclonal antibody, which offers several advantages including: - High batch-to-batch consistency and reproducibility - Improved sensitivity and specificity - Long-term security of supply - Animal-free production For more information <a href="#">see here</a> .  Our RabMAb <sup>®</sup> technology is a patented hybridoma-based technology for making rabbit monoclonal antibodies. For details on our patents, please refer to <a href="#">RabMAb<sup>®</sup> patents</a> .

#### Properties

Form	Liquid
Storage instructions	Shipped at 4°C. Store at 4°C (stable for up to 12 months). Upon delivery aliquot. Store at -20°C long term. Avoid freeze / thaw cycle.
Storage buffer	pH: 7.20

	Preservative: 0.01% Sodium azide
	Constituents: 59% PBS, 40% Glycerol (glycerin, glycerine), 0.5% BSA
<b>Purity</b>	Protein A purified
<b>Clonality</b>	Monoclonal
<b>Clone number</b>	EPR11410-43
<b>Isotype</b>	IgG

## Applications

**The Abpromise guarantee** Our **Abpromise guarantee** covers the use of ab172610 in the following tested applications. The application notes include recommended starting dilutions; optimal dilutions/concentrations should be determined by the end user.

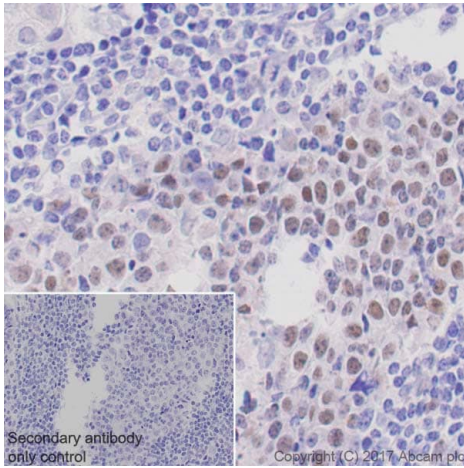
Application	Abreviews	Notes
<b>WB</b>		1/1000 - 1/10000. Detects a band of approximately 87-98 kDa (predicted molecular weight: 78 kDa).
<b>IHC-P</b>	★★★★★ (3)	1/1500. Perform heat mediated antigen retrieval with Tris/EDTA buffer pH 9.0 before commencing with IHC staining protocol. <b>For unpurified use at 1/200 - 1/500. See <u>IHC antigen retrieval protocols</u>.</b>

**Application notes** Is unsuitable for Flow Cyt, ICC/IF or IP.

## Target

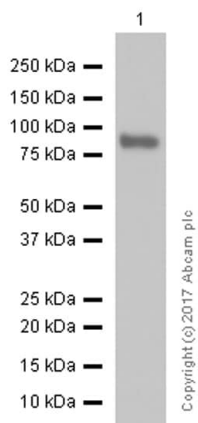
<b>Function</b>	Transcriptional repressor which is required for germinal center formation and antibody affinity maturation. Probably plays an important role in lymphomagenesis.
<b>Tissue specificity</b>	Expressed in germinal center T and B cells and in primary immature dendritic cells.
<b>Involvement in disease</b>	Note=Chromosomal aberrations involving BCL6 may be a cause of B-cell non-Hodgkin lymphoma. Translocation t(3;14)(q27;q32); translocation t(3;22)(q27;q11) with immunoglobulin gene regions. Note=A chromosomal aberration involving BCL6 may be a cause of a form of B-cell leukemia. Translocation t(3;11)(q27;q23) with POU2AF1/OBF1. Note=A chromosomal aberration involving BCL6 may be a cause of lymphoma. Translocation t(3;4)(q27;p11) with ARHH/TTF.
<b>Sequence similarities</b>	Contains 1 BTB (POZ) domain. Contains 6 C2H2-type zinc fingers.
<b>Domain</b>	The BTB domain mediates homodimerization. Its dimer interface mediates peptide binding such as to corepressors BCOR and NCOR2.
<b>Post-translational modifications</b>	Phosphorylated by MAPK1 in response to antigen receptor activation. Phosphorylation induces its degradation by ubiquitin/proteasome pathway.
<b>Cellular localization</b>	Nucleus.

## Images



Immunohistochemistry (Formalin/PFA-fixed paraffin-embedded sections) - Anti-Bcl6 antibody [EPR11410-43] (ab172610)

Immunohistochemistry (Formalin/PFA-fixed paraffin-embedded sections) analysis of human lymph node in stomach tissue sections labeling bcl-6 with purified ab172610 at 1:1500 dilution (0.5 µg/ml). Heat mediated antigen retrieval was performed using **ab93684** (Tris/EDTA buffer, pH 9.0). Tissue was counterstained with Hematoxylin. ImmunoHistoProbe one step HRP Polymer (ready to use). PBS instead of the primary antibody was used as the negative control.



Western blot - Anti-Bcl6 antibody [EPR11410-43] (ab172610)

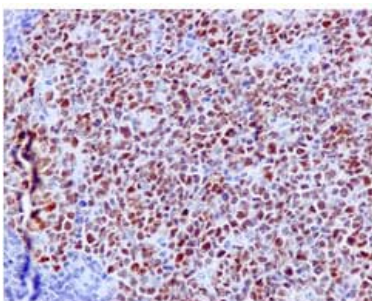
Anti-Bcl6 antibody [EPR11410-43] (ab172610) at 1/2000 dilution (Purified) + Ramos (Human Burkitt's lymphoma B lymphocyte) whole cell lysates at 20 µg

#### Secondary

Goat Anti-Rabbit IgG H&L (HRP) (**ab97051**) at 20000 µg

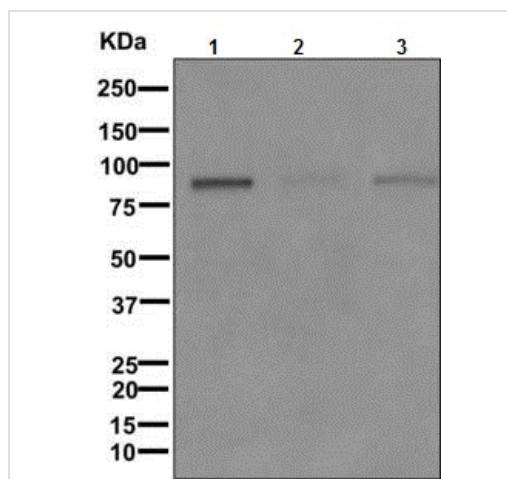
**Predicted band size:** 78 kDa

**Observed band size:** 78 kDa



Immunohistochemistry (Formalin/PFA-fixed paraffin-embedded sections) - Anti-Bcl6 antibody [EPR11410-43] (ab172610)

Immunohistochemical analysis of paraffin-embedded Human lymph node tissue labeling bcl-6 with ab172610 at 1/250 dilution. This image was produced using unpurified antibody.



Western blot - Anti-Bcl6 antibody [EPR11410-43] (ab172610)

**All lanes :** Anti-Bcl6 antibody [EPR11410-43] (ab172610) at 1/1000 dilution

**Lane 1 :** Ramos cell lysate

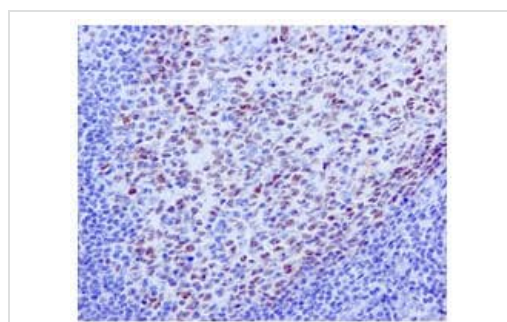
**Lane 2 :** Daudi cell lysate

**Lane 3 :** Raji cell lysate

Lysates/proteins at 10 µg per lane.

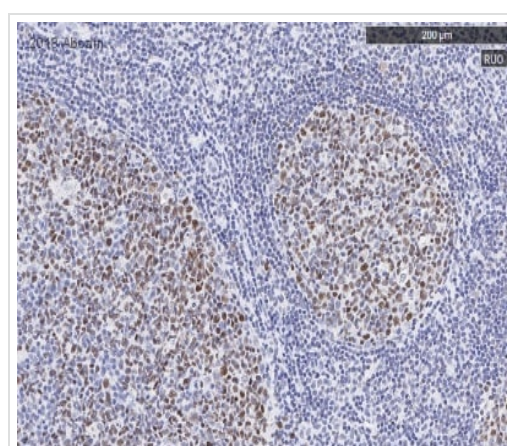
**Predicted band size:** 78 kDa

This image was produced using unpurified antibody.



Immunohistochemistry (Formalin/PFA-fixed paraffin-embedded sections) - Anti-Bcl6 antibody [EPR11410-43] (ab172610)

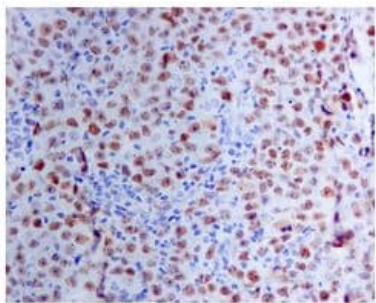
Immunohistochemical analysis of paraffin-embedded Human tonsil tissue labeling bcl-6 with ab172610 at 1/250 dilution. This image was produced using unpurified antibody.



Immunohistochemistry (Formalin/PFA-fixed paraffin-embedded sections) - Anti-Bcl6 antibody [EPR11410-43] (ab172610)

This image is courtesy of an anonymous Abreview

ab172610 staining bcl-6 in Human tonsil tissue sections by Immunohistochemistry (PFA perfusion fixed frozen sections). Tissue samples were fixed by perfusion with formaldehyde, blocked with 1% PB [ab64226](#) for 10 minutes at room temperature and antigen retrieval was by heat mediation in EDTA pH 9. The sample was incubated with primary antibody (1/100 in Leica Bond Diluent) at for 30 minutes. A HRP-conjugated Goat anti-rabbit polyclonal (undiluted) was used as the secondary antibody. This image was produced using unpurified antibody.



Immunohistochemical analysis of paraffin-embedded Human B cell lymphoma tissue labeling bcl-6 with ab172610 at 1/250 dilution. This image was produced using unpurified antibody.

Immunohistochemistry (Formalin/PFA-fixed paraffin-embedded sections) - Anti-Bcl6 antibody [EPR11410-43] (ab172610)

Why choose a recombinant antibody?



**Research with confidence**  
Consistent and reproducible results



**Long-term and scalable supply**  
Recombinant technology



**Success from the first experiment**  
Confirmed specificity



**Ethical standards compliant**  
Animal-free production

Anti-Bcl6 antibody [EPR11410-43] (ab172610)

**Please note:** All products are "FOR RESEARCH USE ONLY. NOT FOR USE IN DIAGNOSTIC PROCEDURES"

## Our Abpromise to you: Quality guaranteed and expert technical support

- Replacement or refund for products not performing as stated on the datasheet
- Valid for 12 months from date of delivery
- Response to your inquiry within 24 hours
- We provide support in Chinese, English, French, German, Japanese and Spanish
- Extensive multi-media technical resources to help you
- We investigate all quality concerns to ensure our products perform to the highest standards

If the product does not perform as described on this datasheet, we will offer a refund or replacement. For full details of the Abpromise, please visit <https://www.abcam.com/abpromise> or contact our technical team.

## Terms and conditions

- Guarantee only valid for products bought direct from Abcam or one of our authorized distributors