



Product datasheet

Anti-Bcl6 antibody [G1191E] ab241549

Recombinant

[1 References](#) [4 Images](#)

Overview

Product name	Anti-Bcl6 antibody [G1191E]
Description	Mouse monoclonal [G1191E] to Bcl6
Host species	Mouse
Tested applications	Suitable for: WB, IP Unsuitable for: Flow Cyt, ICC/IF or IHC-P
Species reactivity	Reacts with: Mouse, Human
Immunogen	Recombinant fragment within Human Bcl6 aa 1 to the C-terminus. The exact immunogen sequence used to generate this antibody is proprietary information. If additional detail on the immunogen is needed to determine the suitability of the antibody for your needs, please contact our Scientific Support team to discuss your requirements. Database link: P41182  Run BLAST with  Run BLAST with
Positive control	WB: Raji and Ramos whole cell lysate. Mouse brain, heart and kidney tissue lysate. IP: Ramos whole cell lysate.
General notes	This antibody clone is manufactured by Abcam. If you require a custom buffer formulation or conjugation for your experiments, please contact orders@abcam.com . This product is a recombinant monoclonal antibody, which offers several advantages including: <ul style="list-style-type: none">- High batch-to-batch consistency and reproducibility- Improved sensitivity and specificity- Long-term security of supply- Animal-free production For more information see here .

Properties

Form	Liquid
Storage instructions	Shipped at 4°C. Store at +4°C short term (1-2 weeks). Upon delivery aliquot. Store at -20°C long term. Avoid freeze / thaw cycle.
Storage buffer	pH: 7.2 Preservative: 0.01% Sodium azide Constituents: PBS, 40% Glycerol (glycerin, glycerine), 0.05% BSA

Purity	Protein A purified
Clonality	Monoclonal
Clone number	GI191E
Isotype	IgG1

Applications

The Abpromise guarantee Our **Abpromise guarantee** covers the use of ab241549 in the following tested applications. The application notes include recommended starting dilutions; optimal dilutions/concentrations should be determined by the end user.

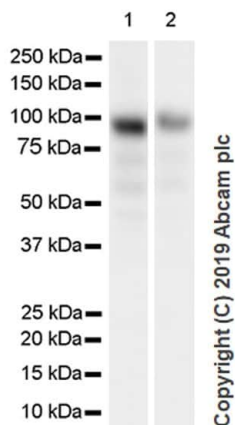
Application	Abreviews	Notes
WB		Use a concentration of 0.403 µg/ml. Predicted molecular weight: 79 kDa.
IP		Use a concentration of 13.433 µg/ml.

Application notes Is unsuitable for Flow Cyt, ICC/IF or IHC-P.

Target

Function	Transcriptional repressor which is required for germinal center formation and antibody affinity maturation. Probably plays an important role in lymphomagenesis.
Tissue specificity	Expressed in germinal center T and B cells and in primary immature dendritic cells.
Involvement in disease	Note=Chromosomal aberrations involving BCL6 may be a cause of B-cell non-Hodgkin lymphoma. Translocation t(3;14)(q27;q32); translocation t(3;22)(q27;q11) with immunoglobulin gene regions. Note=A chromosomal aberration involving BCL6 may be a cause of a form of B-cell leukemia. Translocation t(3;11)(q27;q23) with POU2AF1/OBF1. Note=A chromosomal aberration involving BCL6 may be a cause of lymphoma. Translocation t(3;4)(q27;p11) with ARHH/TTF.
Sequence similarities	Contains 1 BTB (POZ) domain. Contains 6 C2H2-type zinc fingers.
Domain	The BTB domain mediates homodimerization. Its dimer interface mediates peptide binding such as to corepressors BCOR and NCOR2.
Post-translational modifications	Phosphorylated by MAPK1 in response to antigen receptor activation. Phosphorylation induces its degradation by ubiquitin/proteasome pathway.
Cellular localization	Nucleus.

Images



Western blot - Anti-Bcl6 antibody [GI191E]
(ab241549)

All lanes : Anti-Bcl6 antibody [GI191E] (ab241549) at 1/1000 dilution

Lane 1 : Ramos (Human Burkitt's lymphoma B lymphocyte), whole cell lysate

Lane 2 : Raji (human Burkitt's lymphoma B lymphocyte), whole cell lysate

Lysates/proteins at 20 µg per lane.

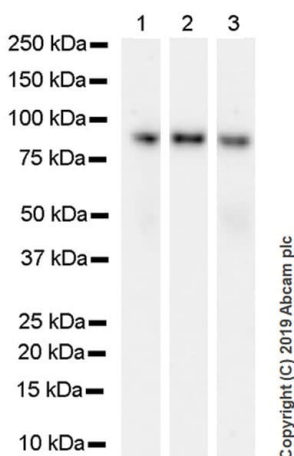
Secondary

All lanes : Peroxidase-Conjugated Goat anti-Mouse IgG (H+L) at 1/10000 dilution

Predicted band size: 79 kDa

Exposure time: 15 seconds

Blocking/Dilution buffer: 5% NFDm/TBST.



Western blot - Anti-Bcl6 antibody [GI191E]
(ab241549)

All lanes : Anti-Bcl6 antibody [GI191E] (ab241549) at 1/1000 dilution

Lane 1 : Mouse brain tissue lysate

Lane 2 : Mouse heart tissue lysate

Lane 3 : Mouse kidney tissue lysate

Lysates/proteins at 20 µg per lane.

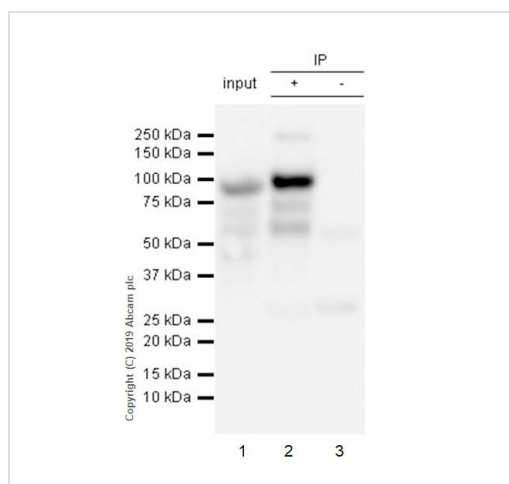
Secondary

All lanes : Peroxidase-Conjugated Goat anti-Mouse IgG (H+L) at 1/5000 dilution

Predicted band size: 79 kDa

Blocking/Dilution buffer: 5% NFDm/TBST.

Exposure times: Lane 1,3: 81 secs; Lane 2: 5 secs.



Immunoprecipitation - Anti-Bcl6 antibody [GI191E] (ab241549)

Bcl6 was immunoprecipitated from 1mg of Ramos (Human Burkitt's lymphoma cell line) whole cell lysate with ab241549 at 1/30 dilution. Western blot was performed from the immunoprecipitate using ab241549 at 1/500 dilution. Anti-mouse IgG for IP (HRP) (**ab131368**) was used at 1/1000 dilution.

Lane 1: Ramos whole cell lysate 10µg (Input).

Lane 2: ab241549 IP in Ramos whole cell lysate.

Lane 3: Mouse monoclonal IgG instead of ab241549 in Ramos whole cell lysate.

Blocking and dilution buffer and concentration: 5% NFDm/TBST.

Exposure time: 3 seconds.

Why choose a recombinant antibody?

- Research with confidence**
Consistent and reproducible results
- Long-term and scalable supply**
Recombinant technology
- Success from the first experiment**
Confirmed specificity
- Ethical standards compliant**
Animal-free production

Anti-Bcl6 antibody [GI191E] (ab241549)

Please note: All products are "FOR RESEARCH USE ONLY. NOT FOR USE IN DIAGNOSTIC PROCEDURES"

Our Abpromise to you: Quality guaranteed and expert technical support

- Replacement or refund for products not performing as stated on the datasheet
- Valid for 12 months from date of delivery
- Response to your inquiry within 24 hours
- We provide support in Chinese, English, French, German, Japanese and Spanish
- Extensive multi-media technical resources to help you
- We investigate all quality concerns to ensure our products perform to the highest standards

If the product does not perform as described on this datasheet, we will offer a refund or replacement. For full details of the Abpromise, please visit <https://www.abcam.com/abpromise> or contact our technical team.

Terms and conditions

- Guarantee only valid for products bought direct from Abcam or one of our authorized distributors