


## Product datasheet

### Anti-Bcl6 antibody [SP155] - C-terminal ab183308

Recombinant RabMAb

★ ★ ★ ★ ★ [2 Abreviews](#) [1 References](#) [10 Images](#)

#### Overview

<b>Product name</b>	Anti-Bcl6 antibody [SP155] - C-terminal
<b>Description</b>	Rabbit monoclonal [SP155] to Bcl6 - C-terminal
<b>Host species</b>	Rabbit
<b>Tested applications</b>	<b>Suitable for:</b> WB, IHC-P <b>Unsuitable for:</b> Flow Cyt
<b>Species reactivity</b>	<b>Reacts with:</b> Human <b>Predicted to work with:</b> Mouse, Rat 
<b>Immunogen</b>	Synthetic peptide. This information is proprietary to Abcam and/or its suppliers.
<b>Positive control</b>	IHC-P: Human tonsil, B-cell lymphoma, HK lymphoma, and follicular lymphoma tissue. WB: Ramos cell lysate.
<b>General notes</b>	<p>This product is a recombinant monoclonal antibody, which offers several advantages including:</p> <ul style="list-style-type: none"> <li>- High batch-to-batch consistency and reproducibility</li> <li>- Improved sensitivity and specificity</li> <li>- Long-term security of supply</li> <li>- Animal-free production</li> </ul> <p>For more information <a href="#">see here</a>.</p> <p><b>This product is FOR RESEARCH USE ONLY. For commercial use, please contact <a href="mailto:partnerships@abcam.com">partnerships@abcam.com</a>.</b></p>

#### Properties

<b>Form</b>	Liquid
<b>Storage instructions</b>	Shipped at 4°C. Store at +4°C short term (1-2 weeks). Upon delivery aliquot. Store at -20°C long term. Avoid freeze / thaw cycle.
<b>Storage buffer</b>	pH: 7.60 Preservative: 0.1% Sodium azide Constituents: PBS, 1% BSA
<b>Purity</b>	Protein A/G purified
<b>Purification notes</b>	Purified from TCS by protein A/G.

<b>Clonality</b>	Monoclonal
<b>Clone number</b>	SP155
<b>Isotype</b>	IgG

## Applications

**The Abpromise guarantee** Our **Abpromise guarantee** covers the use of ab183308 in the following tested applications. The application notes include recommended starting dilutions; optimal dilutions/concentrations should be determined by the end user.

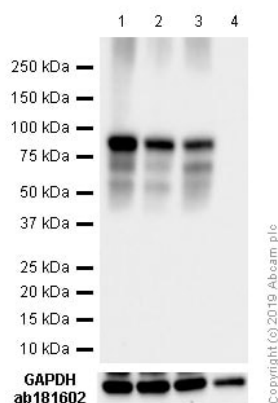
Application	Abreviews	Notes
<b>WB</b>		Use a concentration of 0.135 µg/ml. Detects a band of approximately 78 kDa (predicted molecular weight: 79 kDa).
<b>IHC-P</b>	★ ★ ★ ★ ★ (2)	1/100. Perform heat mediated antigen retrieval with citrate buffer pH 6 before commencing with IHC staining protocol.

**Application notes** Is unsuitable for Flow Cyt.

## Target

<b>Function</b>	Transcriptional repressor which is required for germinal center formation and antibody affinity maturation. Probably plays an important role in lymphomagenesis.
<b>Tissue specificity</b>	Expressed in germinal center T and B cells and in primary immature dendritic cells.
<b>Involvement in disease</b>	Note=Chromosomal aberrations involving BCL6 may be a cause of B-cell non-Hodgkin lymphoma. Translocation t(3;14)(q27;q32); translocation t(3;22)(q27;q11) with immunoglobulin gene regions. Note=A chromosomal aberration involving BCL6 may be a cause of a form of B-cell leukemia. Translocation t(3;11)(q27;q23) with POU2AF1/OBF1. Note=A chromosomal aberration involving BCL6 may be a cause of lymphoma. Translocation t(3;4)(q27;p11) with ARHH/TTF.
<b>Sequence similarities</b>	Contains 1 BTB (POZ) domain. Contains 6 C2H2-type zinc fingers.
<b>Domain</b>	The BTB domain mediates homodimerization. Its dimer interface mediates peptide binding such as to corepressors BCOR and NCOR2.
<b>Post-translational modifications</b>	Phosphorylated by MAPK1 in response to antigen receptor activation. Phosphorylation induces its degradation by ubiquitin/proteasome pathway.
<b>Cellular localization</b>	Nucleus.

## Images



Western blot - Anti-Bcl6 antibody [SP155] - C-terminal (ab183308)

**All lanes :** Anti-Bcl6 antibody [SP155] - C-terminal (ab183308) at 0.135 µg/ml

**Lane 1 :** Ramos(Human Burkitt's lymphoma B lymphocyte)

**Lane 2 :** Raji( Human Burkitt's lymphoma B lymphocyte)

**Lane 3 :** Daudi( Human Burkitt's lymphoma lymphoblast)

**Lane 4 :** HEK-293( Human embryonic kidney epithelial cell)

Lysates/proteins at 20 µg per lane.

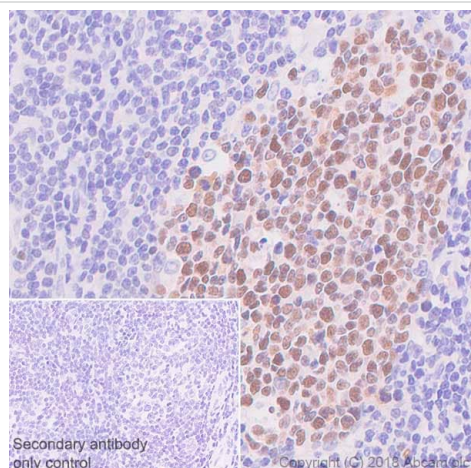
### Secondary

**All lanes :** Goat Anti-Rabbit IgG H&L (HRP) (**ab97051**) at 0.05 µg/ml ("Goat Anti-Rabbit IgG, (H+L), Peroxidase conjugated ")

**Predicted band size:** 79 kDa

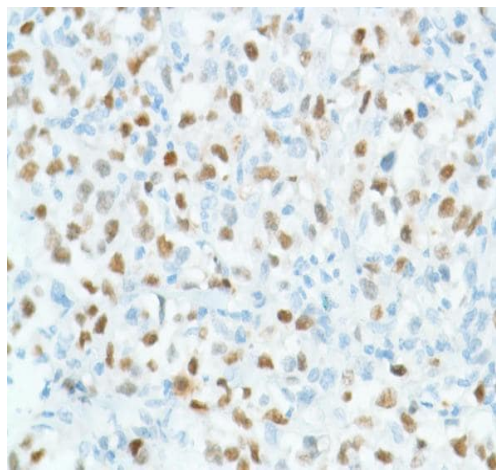
**Observed band size:** 78 kDa

Blocking/Diluting Buffer and concentration: 5% NFDM /TBST.



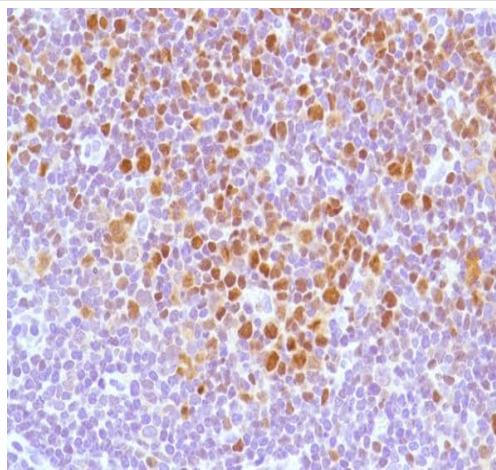
Immunohistochemistry (Formalin/PFA-fixed paraffin-embedded sections) - Anti-Bcl6 antibody [SP155] - C-terminal (ab183308)

Immunohistochemistry (Formalin/PFA-fixed paraffin-embedded sections) analysis of Human tonsil tissue sections labeling Bcl6 with ab183308 at 1/100 dilution (1.35 µg/ml). Heat mediated antigen retrieval was performed Heat mediated antigen retrieval with sodium citrate buffer (pH 6.0, epitope retrieval solution 1) for 10 mins. Rabbit specific IHC polymer detection kit HRP/DAB (**ab209101**) was used as the secondary antibody. Negative control: PBS instead of the primary antibody. Hematoxylin was used as a counterstain.



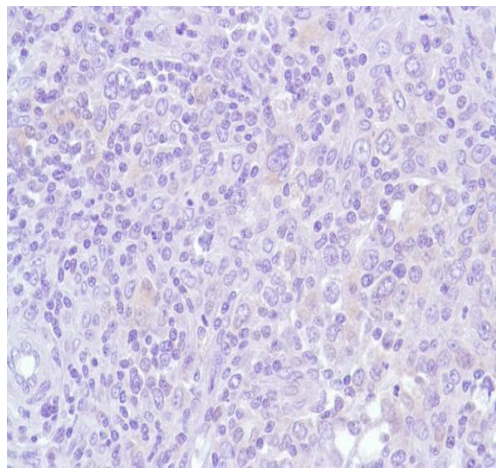
Immunohistochemical analysis of paraffin-embedded Human B-cell lymphoma tissue, labeling Bcl6 using ab183308 at a 1/100 dilution.

Immunohistochemistry (Formalin/PFA-fixed paraffin-embedded sections) - Anti-Bcl6 antibody [SP155] - C-terminal (ab183308)



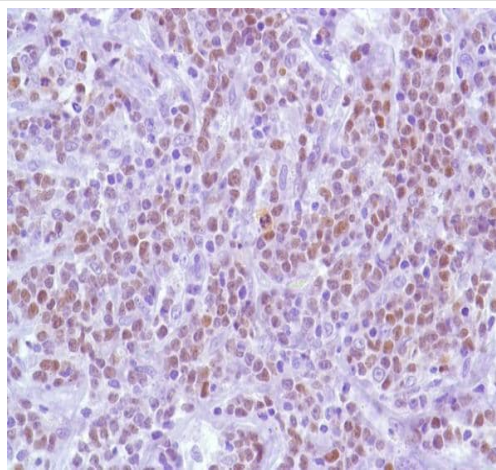
Immunohistochemical analysis of paraffin-embedded Human follicular lymphoma tissue, labeling Bcl6 using ab183308 at a 1/100 dilution.

Immunohistochemistry (Formalin/PFA-fixed paraffin-embedded sections) - Anti-Bcl6 antibody [SP155] - C-terminal (ab183308)



Immunohistochemistry (Formalin/PFA-fixed paraffin-embedded sections) - Anti-Bcl6 antibody [SP155] - C-terminal (ab183308)

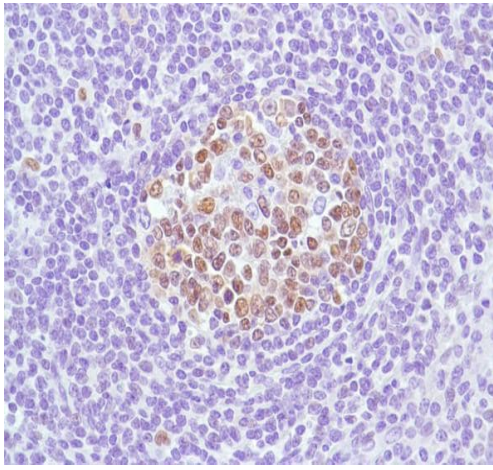
Immunohistochemical analysis of paraffin-embedded Human HK lymphoma tissue, labeling Bcl6 using ab183308 at a 1/100 dilution.



Immunohistochemistry (Formalin/PFA-fixed paraffin-embedded sections) - Anti-Bcl6 antibody [SP155] - C-terminal (ab183308)

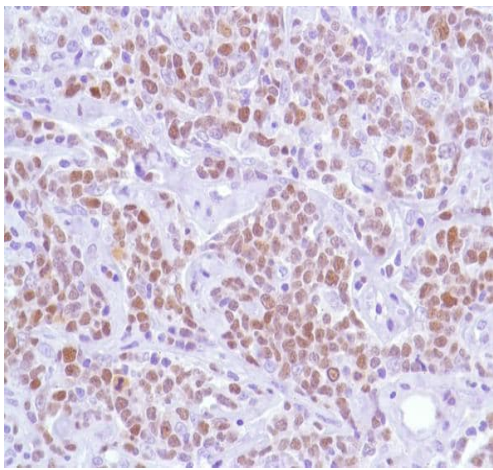
Immunohistochemical analysis of paraffin-embedded Human B-cell lymphoma tissue, labeling Bcl6 using ab183308 at a 1/100 dilution.





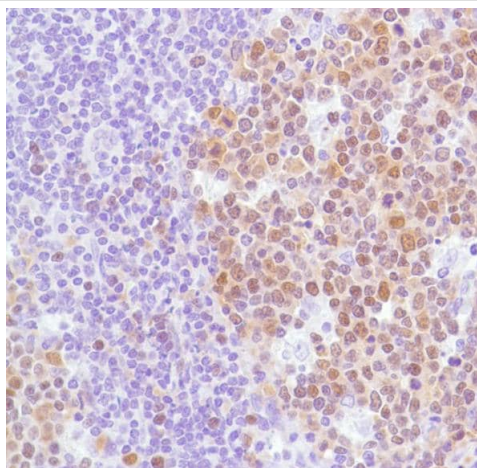
Immunohistochemistry (Formalin/PFA-fixed paraffin-embedded sections) - Anti-Bcl6 antibody [SP155] - C-terminal (ab183308)

Immunohistochemical analysis of paraffin-embedded Human tonsil tissue, labeling Bcl6 using ab183308 at a 1/100 dilution.



Immunohistochemistry (Formalin/PFA-fixed paraffin-embedded sections) - Anti-Bcl6 antibody [SP155] - C-terminal (ab183308)

Immunohistochemical analysis of paraffin-embedded Human B-cell lymphoma tissue, labeling Bcl6 using ab183308 at a 1/100 dilution.



Immunohistochemical analysis of paraffin-embedded Human tonsil tissue, labeling Bcl6 using ab183308 at a 1/100 dilution.

Immunohistochemistry (Formalin/PFA-fixed paraffin-embedded sections) - Anti-Bcl6 antibody [SP155] - C-terminal (ab183308)

Why choose a recombinant antibody?



**Research with confidence**  
Consistent and reproducible results



**Long-term and scalable supply**  
Recombinant technology



**Success from the first experiment**  
Confirmed specificity



**Ethical standards compliant**  
Animal-free production

Anti-Bcl6 antibody [SP155] - C-terminal (ab183308)

**Please note:** All products are "FOR RESEARCH USE ONLY. NOT FOR USE IN DIAGNOSTIC PROCEDURES"

### Our Abpromise to you: Quality guaranteed and expert technical support

- Replacement or refund for products not performing as stated on the datasheet
- Valid for 12 months from date of delivery
- Response to your inquiry within 24 hours
- We provide support in Chinese, English, French, German, Japanese and Spanish
- Extensive multi-media technical resources to help you
- We investigate all quality concerns to ensure our products perform to the highest standards

If the product does not perform as described on this datasheet, we will offer a refund or replacement. For full details of the Abpromise, please visit <https://www.abcam.com/abpromise> or contact our technical team.

## Terms and conditions

---

- Guarantee only valid for products bought direct from Abcam or one of our authorized distributors