


## Product datasheet

# Anti-BCL9 antibody ab37305

★★★★☆ [2 Abreviews](#) [20 References](#) [2 Images](#)

### Overview

---

<b>Product name</b>	Anti-BCL9 antibody
<b>Description</b>	Rabbit polyclonal to BCL9
<b>Host species</b>	Rabbit
<b>Tested applications</b>	<b>Suitable for:</b> WB, ICC/IF
<b>Species reactivity</b>	<b>Reacts with:</b> Human <b>Predicted to work with:</b> Mouse 
<b>Immunogen</b>	Synthetic peptide corresponding to Human BCL9 aa 800-900 conjugated to keyhole limpet haemocyanin. (Peptide available as <a href="#">ab37304</a> )
<b>General notes</b>	<p>The Life Science industry has been in the grips of a reproducibility crisis for a number of years. Abcam is leading the way in addressing this with our range of recombinant monoclonal antibodies and knockout edited cell lines for gold-standard validation. Please check that this product meets your needs before purchasing.</p> <p>If you have any questions, special requirements or concerns, please send us an inquiry and/or contact our Support team ahead of purchase. Recommended alternatives for this product can be found below, along with publications, customer reviews and Q&amp;As</p>

### Properties

---

<b>Form</b>	Liquid
<b>Storage instructions</b>	Shipped at 4°C. Store at +4°C short term (1-2 weeks). Upon delivery aliquot. Store at -20°C or -80°C. Avoid freeze / thaw cycle.
<b>Storage buffer</b>	pH: 7.40 Preservative: 0.02% Sodium azide Constituent: PBS  Batches of this product that have a concentration < 1mg/ml may have BSA added as a stabilising agent. If you would like information about the formulation of a specific lot, please contact our scientific support team who will be happy to help.
<b>Purity</b>	Immunogen affinity purified
<b>Clonality</b>	Polyclonal

Isotype

IgG

## Applications

### The Abpromise guarantee

Our **Abpromise guarantee** covers the use of ab37305 in the following tested applications.

The application notes include recommended starting dilutions; optimal dilutions/concentrations should be determined by the end user.

Application	Abreviews	Notes
WB	★ ★ ★ ★ ★ (1)	Use a concentration of 2 µg/ml. Detects a band of approximately 180 kDa (predicted molecular weight: 140 kDa). Can be blocked with <b>Human BCL9 peptide (ab37304)</b> .
ICC/IF		Use a concentration of 1 µg/ml.

## Target

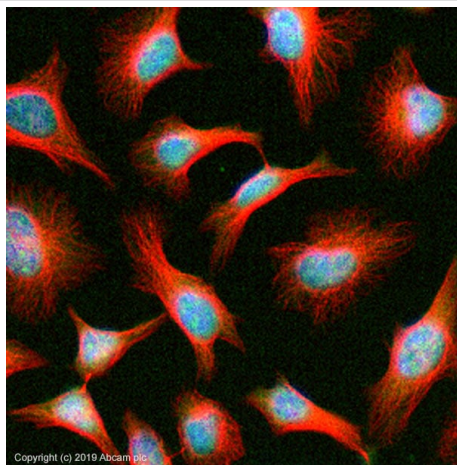
### Relevance

BCL9 is involved in signal transduction through the Wnt pathway. It promotes beta-catenin's transcriptional activity. BCL9 is associated with B-cell acute lymphoblastic leukemia. The overexpression of BCL9 may be of pathogenic significance in B-cell malignancies (referenced from swissprot and entrez gene).

### Cellular localization

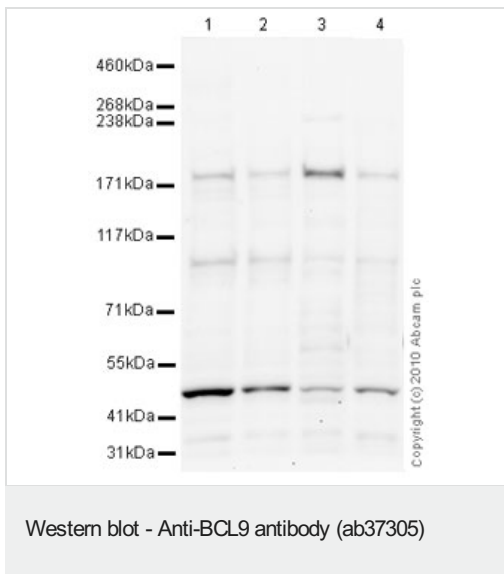
Nuclear

## Images



Immunocytochemistry/ Immunofluorescence - Anti-BCL9 antibody (ab37305)

ab37305 stained in HeLa cells. Cells were fixed with 100% methanol (5 min) at room temperature and incubated with PBS containing 10% goat serum, 0.3 M glycine, 1% BSA and 0.1% Triton for 1h at room temperature to permeabilise the cells and block non-specific protein-protein interactions. The cells were then incubated with the antibody ab37305 at 5µg/ml and **ab7291** (Mouse monoclonal to alpha Tubulin - Loading Control) used at a 1/1000 dilution overnight at +4°C. The secondary antibodies were **ab150081**, Goat Anti-Rabbit IgG H&L (Alexa Fluor® 488) preadsorbed, (pseudo-colored green) and **ab150120**, Goat polyclonal Secondary Antibody to Mouse IgG - H&L (Alexa Fluor® 594) preadsorbed, (colored red), both used at a 1/1000 dilution for 1 hour at room temperature. DAPI was used to stain the cell nuclei (colored blue) at a concentration of 1.43 µM for 1 hour at room temperature.



**All lanes** : Anti-BCL9 antibody (ab37305) at 2 µg/ml

**Lane 1** : HeLa (Human epithelial carcinoma cell line) Nuclear Lysate

**Lane 2** : Jurkat nuclear extract lysate ([ab14844](#))

**Lane 3** : MCF7 (Human breast adenocarcinoma cell line) Nuclear Lysate

**Lane 4** : Ramos (Human Burkitt's lymphoma cell line) Whole Cell Lysate

Lysates/proteins at 20 µg per lane.

### Secondary

**All lanes** : Goat polyclonal to Rabbit IgG - H&L - Pre-Adsorbed (HRP) at 1/3000 dilution

Performed under reducing conditions.

**Predicted band size:** 140 kDa

**Observed band size:** 180 kDa

**Additional bands at:** 100 kDa, 47 kDa. We are unsure as to the identity of these extra bands.

**Exposure time:** 20 minutes

**Please note:** All products are "FOR RESEARCH USE ONLY. NOT FOR USE IN DIAGNOSTIC PROCEDURES"

### Our Abpromise to you: Quality guaranteed and expert technical support

- Replacement or refund for products not performing as stated on the datasheet
- Valid for 12 months from date of delivery
- Response to your inquiry within 24 hours
- We provide support in Chinese, English, French, German, Japanese and Spanish
- Extensive multi-media technical resources to help you
- We investigate all quality concerns to ensure our products perform to the highest standards

If the product does not perform as described on this datasheet, we will offer a refund or replacement. For full details of the Abpromise, please visit <https://www.abcam.com/abpromise> or contact our technical team.

## Terms and conditions

---

- Guarantee only valid for products bought direct from Abcam or one of our authorized distributors