

Anti-BCMA antibody - C-terminal ab5972

[8 References](#) [4 Images](#)

Overview

Product name	Anti-BCMA antibody - C-terminal
Description	Rabbit polyclonal to BCMA - C-terminal
Host species	Rabbit
Tested applications	Suitable for: ICC/IF, IHC-P, WB
Species reactivity	Reacts with: Human
Immunogen	Synthetic peptide corresponding to Human BCMA (C terminal). (Peptide available as ab6087)
Positive control	Human spleen tissue lysate, K562 or U937 whole cell lysates.
General notes	<p>Members in the TNF superfamily regulate immune responses and induce apoptosis. Two novel members in the TNF family were recently identified and designated BAFF/BLyS/TALL1/THANK/zTNF4 and April/TALL2, respectively. BAFF was characterized as a B cell activator since it induced B cell proliferation and immunoglobulin secretion. April regulates immunological and non immunological cell growth. Three receptors, BCMA (for B cell maturation protein), TACI, and BAFFR, for BAFF were recently identified. BCMA, like TACI, binds BAFF and April. BAFF and its receptors induce B cell development and survival, activate NF-kappaB and c-jun N-terminal kinase, and are involved in B cell associated autoimmune diseases.</p> <p>The Life Science industry has been in the grips of a reproducibility crisis for a number of years. Abcam is leading the way in addressing this with our range of recombinant monoclonal antibodies and knockout edited cell lines for gold-standard validation. Please check that this product meets your needs before purchasing.</p> <p>If you have any questions, special requirements or concerns, please send us an inquiry and/or contact our Support team ahead of purchase. Recommended alternatives for this product can be found below, along with publications, customer reviews and Q&As</p>

Properties

Form	Liquid
Storage instructions	Shipped at 4°C. Store at +4°C short term (1-2 weeks). Store at +4°C.
Storage buffer	pH: 7.2 Preservative: 0.02% Sodium azide
Purity	Immunogen affinity purified

Purification notes	BCMA Antibody is affinity chromatography purified via peptide column.
Primary antibody notes	Members in the TNF superfamily regulate immune responses and induce apoptosis. Two novel members in the TNF family were recently identified and designated BAFF/BLyS/TALL1/THANK/zTNF4 and April/TALL2, respectively. BAFF was characterized as a B cell activator since it induced B cell proliferation and immunoglobulin secretion. April regulates immunological and non immunological cell growth. Three receptors, BCMA (for B cell maturation protein), TACI, and BAFFR, for BAFF were recently identified. BCMA, like TACI, binds BAFF and April. BAFF and its receptors induce B cell development and survival, activate NF-kappaB and c-jun N-terminal kinase, and are involved in B cell associated autoimmune diseases.
Clonality	Polyclonal
Isotype	IgG

Applications

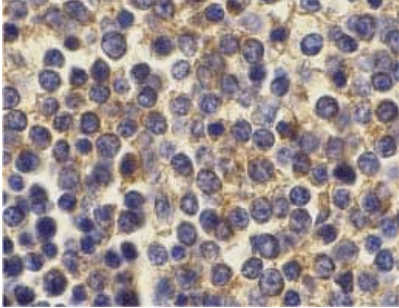
The Abpromise guarantee Our **Abpromise guarantee** covers the use of ab5972 in the following tested applications. The application notes include recommended starting dilutions; optimal dilutions/concentrations should be determined by the end user.

Application	Abreviews	Notes
ICC/IF		Use a concentration of 20 µg/ml.
IHC-P		Use a concentration of 10 µg/ml.
WB		Use a concentration of 2 - 5 µg/ml. Predicted molecular weight: 20 kDa.

Target

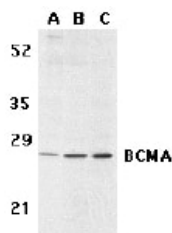
Function	Receptor for TNFSF13B/BLyS/BAFF and TNFSF13/APRIL. Promotes B-cell survival and plays a role in the regulation of humoral immunity. Activates NF-kappa-B and JNK.
Tissue specificity	Expressed in mature B-cells, but not in T-cells or monocytes.
Involvement in disease	Note=A chromosomal aberration involving TNFRSF17 is found in a form of T-cell acute lymphoblastic leukemia (T-ALL). Translocation t(4;16)(q26;p13) with IL2.
Sequence similarities	Contains 1 TNFR-Cys repeat.
Cellular localization	Cell membrane. Endomembrane system. Perinuclear Golgi-like structures.

Images



ab5972 at 10µg/ml staining BCMA in human spleen cells by IHC

Immunohistochemistry (Formalin/PFA-fixed paraffin-embedded sections) - Anti-BCMA antibody - C-terminal (ab5972)



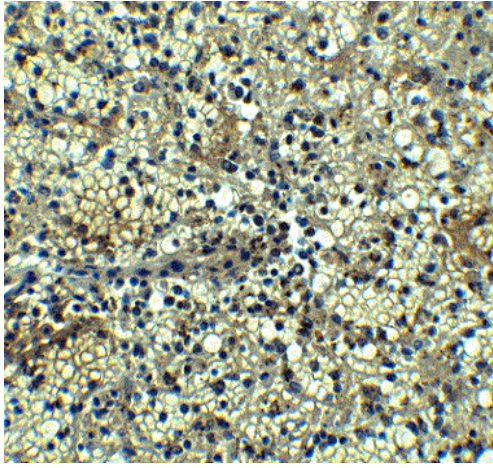
Western blot analysis of BCMA in human spleen (A) tissue lysate, K562 (B), and U937 (C) cell lysates with ab5972 at 5 µg/ml.

Western blot analysis of BCMA in human spleen (A) tissue lysate, K562 (B), and U937 (C) cell lysates with ab5972 at 5 µg/ml.

Western blot - Anti-BCMA antibody - C-terminal (ab5972)

Immunocytochemistry/ Immunofluorescence - Anti-BCMA antibody - C-terminal (ab5972)

Immunofluorescence of BCMA in Human Spleen cells using ab5972 at 10 ug/ml.



Immunohistochemistry of BCMA in human spleen tissue with BCMA antibody at 5 µg/ml.

Immunohistochemistry (Formalin/PFA-fixed paraffin-embedded sections) - Anti-BCMA antibody - C-terminal (ab5972)

Please note: All products are "FOR RESEARCH USE ONLY. NOT FOR USE IN DIAGNOSTIC PROCEDURES"

Our Abpromise to you: Quality guaranteed and expert technical support

- Replacement or refund for products not performing as stated on the datasheet
- Valid for 12 months from date of delivery
- Response to your inquiry within 24 hours
- We provide support in Chinese, English, French, German, Japanese and Spanish
- Extensive multi-media technical resources to help you
- We investigate all quality concerns to ensure our products perform to the highest standards

If the product does not perform as described on this datasheet, we will offer a refund or replacement. For full details of the Abpromise, please visit <https://www.abcam.com/abpromise> or contact our technical team.

Terms and conditions

- Guarantee only valid for products bought direct from Abcam or one of our authorized distributors