

## Product datasheet

# Anti-Bcr antibody [EP535Y] - BSA and Azide free ab247287

Recombinant RabMAb

4 Images

### Overview

Product name	Anti-Bcr antibody [EP535Y] - BSA and Azide free
Description	Rabbit monoclonal [EP535Y] to Bcr - BSA and Azide free
Host species	Rabbit
Tested applications	<b>Suitable for:</b> IHC-P, WB, ICC/IF
Species reactivity	<b>Reacts with:</b> Human
Immunogen	Synthetic peptide. This information is proprietary to Abcam and/or its suppliers.
Positive control	K562 cell lysate, human lymphoma, HeLa cells.
General notes	<p>ab247287 is the carrier-free version of <a href="#">ab40779</a>.</p> <p>Our <b>carrier-free</b> antibodies are typically supplied in a PBS-only formulation, purified and free of BSA, sodium azide and glycerol. The carrier-free buffer and high concentration allow for increased conjugation efficiency.</p> <p>This conjugation-ready format is designed for use with fluorochromes, metal isotopes, oligonucleotides, and enzymes, which makes them ideal for antibody labelling, functional and cell-based assays, flow-based assays (e.g. mass cytometry) and Multiplex Imaging applications.</p> <p>Use our <b>conjugation kits</b> for antibody conjugates that are ready-to-use in as little as 20 minutes with &lt;1 minute hands-on-time and 100% antibody recovery: available for fluorescent dyes, HRP, biotin and gold.</p> <p>This product is compatible with the Maxpar<sup>®</sup> Antibody Labeling Kit from Fluidigm, without the need for antibody preparation. Maxpar<sup>®</sup> is a trademark of Fluidigm Canada Inc.</p> <p>This product is a recombinant monoclonal antibody, which offers several advantages including:</p> <ul style="list-style-type: none"> <li>- High batch-to-batch consistency and reproducibility</li> <li>- Improved sensitivity and specificity</li> <li>- Long-term security of supply</li> <li>- Animal-free production</li> </ul> <p>For more information <a href="#">see here</a>.</p> <p>Our RabMAb<sup>®</sup> technology is a patented hybridoma-based technology for making rabbit monoclonal antibodies. For details on our patents, please refer to <a href="#">RabMAb<sup>®</sup> patents</a>.</p> <p>Mouse, Rat: We have preliminary internal testing data to indicate this antibody may not react with</p>

these species. Please contact us for more information.

## Properties

<b>Form</b>	Liquid
<b>Storage instructions</b>	Shipped at 4°C. Store at +4°C. Do Not Freeze.
<b>Storage buffer</b>	pH: 7.2 Constituent: PBS
<b>Carrier free</b>	Yes
<b>Purity</b>	Protein A purified
<b>Clonality</b>	Monoclonal
<b>Clone number</b>	EP535Y
<b>Isotype</b>	IgG

## Applications

**The Abpromise guarantee** Our **Abpromise guarantee** covers the use of ab247287 in the following tested applications.

The application notes include recommended starting dilutions; optimal dilutions/concentrations should be determined by the end user.

Application	Abreviews	Notes
<b>IHC-P</b>		Use at an assay dependent concentration. Perform heat mediated antigen retrieval with citrate buffer pH 6 before commencing with IHC staining protocol.
<b>WB</b>		Use at an assay dependent concentration. Detects a band of approximately 150 kDa (predicted molecular weight: 143 kDa).
<b>ICC/IF</b>		Use at an assay dependent concentration.

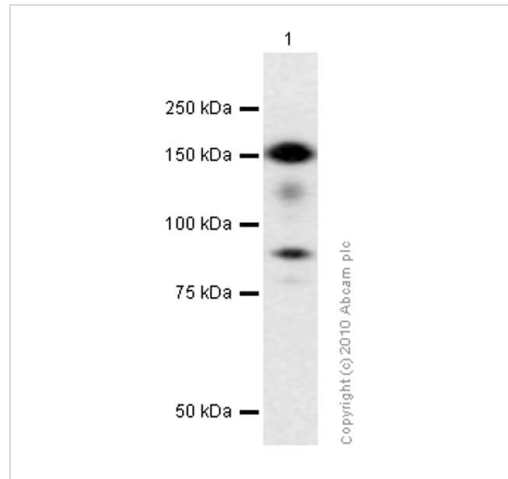
## Target

<b>Function</b>	GTPase-activating protein for RAC1 and CDC42. Promotes the exchange of RAC or CDC42-bound GDP by GTP, thereby activating them. Displays serine/threonine kinase activity.
<b>Involvement in disease</b>	Note=A chromosomal aberration involving BCR is a cause of chronic myeloid leukemia. Translocation t(9;22)(q34;q11) with ABL1. The translocation produces a BCR-ABL found also in acute myeloid leukemia (AML) and acute lymphoblastic leukemia (ALL).
<b>Sequence similarities</b>	Contains 1 C2 domain. Contains 1 DH (DBL-homology) domain. Contains 1 PH domain. Contains 1 Rho-GAP domain.
<b>Domain</b>	The region involved in binding to ABL1 SH2-domain is rich in serine residues and needs to be Ser/Thr phosphorylated prior to SH2 binding. This region is essential for the activation of the ABL1 tyrosine kinase and transforming potential of the chimeric BCR-ABL oncogene. The DH domain is involved in interaction with CCPG1.

## Post-translational modifications

Autophosphorylated. Phosphorylated by FES/FPS on tyrosine residues, leading to down-regulation of the BCR kinase activity. Phosphorylation at Tyr-177 by HCK is important for interaction with GRB2.

## Images



Western blot - Anti-Bcr antibody [EP535Y] - BSA and Azide free (ab247287)

Anti-Bcr antibody [EP535Y] ([ab40779](#)) at 1/1000 dilution (Purified) + K-562 (Human chronic myelogenous leukemia lymphoblast) whole cell lysate at 15 µg

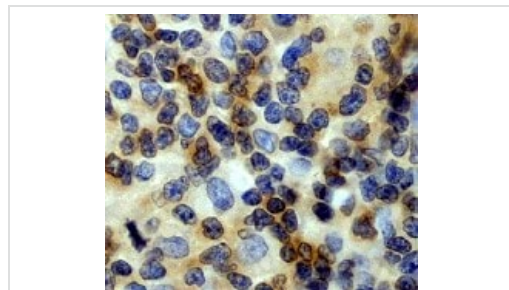
### Secondary

Goat Anti-Rabbit IgG H&L (HRP) ([ab97051](#)) at 1/20000 dilution

**Predicted band size:** 143 kDa

**Observed band size:** 150 kDa

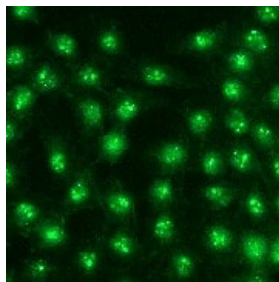
This data was developed using [ab40779](#), the same antibody clone in a different buffer formulation.



Immunohistochemistry (Formalin/PFA-fixed paraffin-embedded sections) - Anti-Bcr antibody [EP535Y] - BSA and Azide free (ab247287)

This data was developed using [ab40779](#), the same antibody clone in a different buffer formulation.

[ab40779](#), staining human lymphoma by immunohistochemistry, paraffin embedded tissue. Perform heat mediated antigen retrieval with citrate buffer pH 6 before commencing with IHC staining protocol.



This data was developed using **ab40779**, the same antibody clone in a different buffer formulation.

**ab40779**, staining HeLa cells by immunofluorescence.

Immunocytochemistry/ Immunofluorescence - Anti-Bcr antibody [EP535Y] - BSA and Azide free (ab247287)

#### Why choose a recombinant antibody?



**Research with confidence**  
Consistent and reproducible results



**Long-term and scalable supply**  
Recombinant technology



**Success from the first experiment**  
Confirmed specificity



**Ethical standards compliant**  
Animal-free production

Anti-Bcr antibody [EP535Y] - BSA and Azide free (ab247287)

**Please note:** All products are "FOR RESEARCH USE ONLY. NOT FOR USE IN DIAGNOSTIC PROCEDURES"

#### Our Abpromise to you: Quality guaranteed and expert technical support

- Replacement or refund for products not performing as stated on the datasheet
- Valid for 12 months from date of delivery
- Response to your inquiry within 24 hours
- We provide support in Chinese, English, French, German, Japanese and Spanish
- Extensive multi-media technical resources to help you
- We investigate all quality concerns to ensure our products perform to the highest standards

If the product does not perform as described on this datasheet, we will offer a refund or replacement. For full details of the Abpromise, please visit <https://www.abcam.com/abpromise> or contact our technical team.

#### Terms and conditions

- Guarantee only valid for products bought direct from Abcam or one of our authorized distributors