

## Product datasheet

### Anti-beta 1 Spectrin antibody [EPR6259] **ab129065**

Recombinant **RabMAb**

[2 References](#) [2 Images](#)

#### Overview

<b>Product name</b>	Anti-beta 1 Spectrin antibody [EPR6259]
<b>Description</b>	Rabbit monoclonal [EPR6259] to beta 1 Spectrin
<b>Host species</b>	Rabbit
<b>Tested applications</b>	<b>Suitable for:</b> WB <b>Unsuitable for:</b> IHC-P or IP
<b>Species reactivity</b>	<b>Reacts with:</b> Human
<b>Immunogen</b>	Synthetic peptide within Human beta 1 Spectrin aa 300-400. The exact sequence is proprietary.
<b>Positive control</b>	Human red blood cell lysate.
<b>General notes</b>	<p>This product is a recombinant monoclonal antibody, which offers several advantages including:</p> <ul style="list-style-type: none"> <li>- High batch-to-batch consistency and reproducibility</li> <li>- Improved sensitivity and specificity</li> <li>- Long-term security of supply</li> <li>- Animal-free production</li> </ul> <p>For more information <a href="#">see here</a>.</p> <p>Our RabMAb<sup>®</sup> technology is a patented hybridoma-based technology for making rabbit monoclonal antibodies. For details on our patents, please refer to <a href="#">RabMAb<sup>®</sup> patents</a>.</p> <p>Mouse, Rat: We have preliminary internal testing data to indicate this antibody may not react with these species. Please contact us for more information.</p>

#### Properties

<b>Form</b>	Liquid
<b>Storage instructions</b>	Shipped at 4°C. Store at -20°C. Stable for 12 months at -20°C.
<b>Storage buffer</b>	<p>pH: 7.20</p> <p>Preservative: 0.01% Sodium azide</p> <p>Constituents: 59% PBS, 40% Glycerol (glycerin, glycerine), 0.5% BSA</p>
<b>Purity</b>	Protein A purified
<b>Clonality</b>	Monoclonal
<b>Clone number</b>	EPR6259

## Applications

### The Abpromise guarantee

Our **Abpromise guarantee** covers the use of ab129065 in the following tested applications.

The application notes include recommended starting dilutions; optimal dilutions/concentrations should be determined by the end user.

Application	Abreviews	Notes
WB		1/1000 - 1/10000. Detects a band of approximately 270 kDa (predicted molecular weight: 246 kDa).

### Application notes

Is unsuitable for IHC-P or IP.

## Target

### Function

Spectrin is the major constituent of the cytoskeletal network underlying the erythrocyte plasma membrane. It associates with band 4.1 and actin to form the cytoskeletal superstructure of the erythrocyte plasma membrane.

### Involvement in disease

Defects in SPTB are the cause of elliptocytosis type 3 (EL3) [MIM:182870]. EL3 is a Rhesus-unlinked form of hereditary elliptocytosis, a genetically heterogeneous, autosomal dominant hematologic disorder. It is characterized by variable hemolytic anemia and elliptical or oval red cell shape.

Defects in SPTB are the cause of spherocytosis type 2 (SPH2) [MIM:182870]; also known as hereditary spherocytosis type 2 (HS2). Spherocytosis is a hematologic disorder leading to chronic hemolytic anemia and characterized by numerous abnormally shaped erythrocytes which are generally spheroidal. SPH2 is characterized by severe hemolytic anemia. Inheritance is autosomal dominant.

### Sequence similarities

Belongs to the spectrin family.  
Contains 2 CH (calponin-homology) domains.  
Contains 17 spectrin repeats.

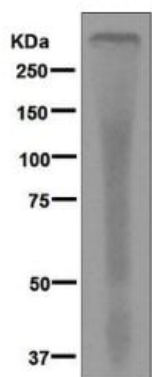
### Post-translational modifications

The first phosphorylation event occurs on Ser-2114, followed by Ser-2125, Ser-2123, Ser-2128, Ser-2117, and Thr-2110.

### Cellular localization

Cytoplasm > cytoskeleton. Cytoplasm > cell cortex.

## Images



Western blot - Anti-beta 1 Spectrin antibody  
[EPR6259] (ab129065)

Anti-beta 1 Spectrin antibody [EPR6259] (ab129065) at 1/1000  
dilution + Red blood cell lysate at 10 µg

### Secondary

Goat anti-rabbit HRP at 1/2000 dilution

**Predicted band size:** 246 kDa

### Why choose a recombinant antibody?



**Research with  
confidence**  
Consistent and  
reproducible results



**Long-term and  
scalable supply**  
Recombinant  
technology



**Success from the  
first experiment**  
Confirmed  
specificity



**Ethical standards  
compliant**  
Animal-free  
production

Anti-beta 1 Spectrin antibody [EPR6259] (ab129065)

**Please note:** All products are "FOR RESEARCH USE ONLY. NOT FOR USE IN DIAGNOSTIC PROCEDURES"

### Our Abpromise to you: Quality guaranteed and expert technical support

- Replacement or refund for products not performing as stated on the datasheet
- Valid for 12 months from date of delivery
- Response to your inquiry within 24 hours

- We provide support in Chinese, English, French, German, Japanese and Spanish
- Extensive multi-media technical resources to help you
- We investigate all quality concerns to ensure our products perform to the highest standards

If the product does not perform as described on this datasheet, we will offer a refund or replacement. For full details of the Abpromise, please visit <https://www.abcam.com/abpromise> or contact our technical team.

#### **Terms and conditions**

---

- Guarantee only valid for products bought direct from Abcam or one of our authorized distributors