




Product datasheet

Anti-beta 2 Microglobulin antibody [B2M/1118] ab215882

[5 Images](#)

Overview

Product name	Anti-beta 2 Microglobulin antibody [B2M/1118]
Description	Mouse monoclonal [B2M/1118] to beta 2 Microglobulin
Host species	Mouse
Tested applications	Suitable for: IHC-P, WB, Flow Cyt
Species reactivity	Reacts with: Human Predicted to work with: Non human primates 
Immunogen	Recombinant full length protein corresponding to Human beta 2 Microglobulin aa 1 to the C-terminus. Database link: P61769
	 Run BLAST with  Run BLAST with
Positive control	IHC-P: Human cervical and endometrial carcinoma tissues. Flow Cyt: HeLa cells WB: Raji and THP-1 cell lysates
General notes	<p>The Life Science industry has been in the grips of a reproducibility crisis for a number of years. Abcam is leading the way in addressing this with our range of recombinant monoclonal antibodies and knockout edited cell lines for gold-standard validation. Please check that this product meets your needs before purchasing.</p> <p>If you have any questions, special requirements or concerns, please send us an inquiry and/or contact our Support team ahead of purchase. Recommended alternatives for this product can be found below, along with publications, customer reviews and Q&As</p>

Properties

Form	Liquid
Storage instructions	Shipped at 4°C. Store at +4°C short term (1-2 weeks). Upon delivery aliquot. Store at -20°C long term. Avoid freeze / thaw cycle.
Storage buffer	pH: 7.2 Preservative: 0.05% Sodium azide Constituents: 99% PBS, 0.05% BSA
Purity	Protein G purified

Clonality	Monoclonal
Clone number	B2M/1118
Isotype	IgG1
Light chain type	kappa

Applications

The Abpromise guarantee Our **Abpromise guarantee** covers the use of ab215882 in the following tested applications.

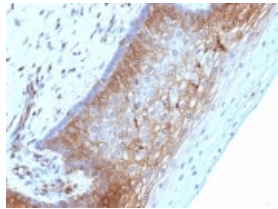
The application notes include recommended starting dilutions; optimal dilutions/concentrations should be determined by the end user.

Application	Abreviews	Notes
IHC-P		Use a concentration of 1 - 2 µg/ml. Perform heat mediated antigen retrieval with Tris/EDTA buffer pH 9.0 before commencing with IHC staining protocol. Primary incubation for 30 minutes at room temperature.
WB		Use a concentration of 1 - 2 µg/ml. Predicted molecular weight: 14 kDa.
Flow Cyt		Use a concentration of 1 - 2 µg/ml.

Target

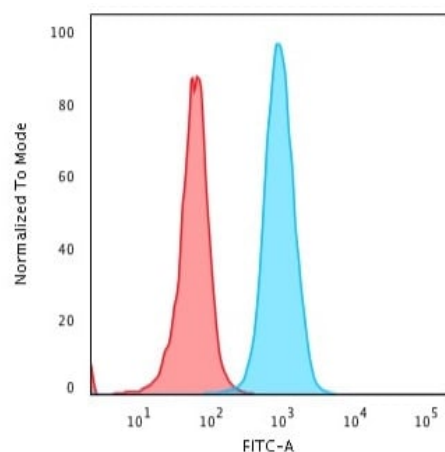
Function	Component of the class I major histocompatibility complex (MHC). Involved in the presentation of peptide antigens to the immune system.
Involvement in disease	Defects in B2M are the cause of hypercatabolic hypoproteinemia (HYCATHYP) [MIM:241600]. Affected individuals show marked reduction in serum concentrations of immunoglobulin and albumin, probably due to rapid degradation. Note=Beta-2-microglobulin may adopt the fibrillar configuration of amyloid in certain pathologic states. The capacity to assemble into amyloid fibrils is concentration dependent. Persistently high beta(2)-microglobulin serum levels lead to amyloidosis in patients on long-term hemodialysis.
Sequence similarities	Belongs to the beta-2-microglobulin family. Contains 1 Ig-like C1-type (immunoglobulin-like) domain.
Post-translational modifications	Glycation of Ile-21 is observed in long-term hemodialysis patients.
Cellular localization	Secreted. Detected in serum and urine.

Images



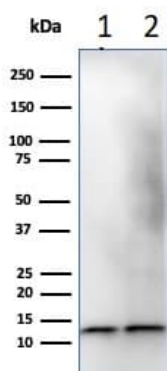
Immunohistochemical analysis of formalin-fixed, paraffin-embedded Human cervical carcinoma tissue labeling beta 2 Microglobulin with ab215882 at 1 µg/ml.

Immunohistochemistry (Formalin/PFA-fixed paraffin-embedded sections) - Anti-beta 2 Microglobulin antibody [B2M/1118] (ab215882)



Flow Cytometric Analysis of HeLa cells labeling beta 2 Microglobulin with ab215882; followed by goat anti-mouse IgG-CF488 (Blue); Unstained cells Control (Red).

Flow Cytometry - Anti-beta 2 Microglobulin antibody [B2M/1118] (ab215882)



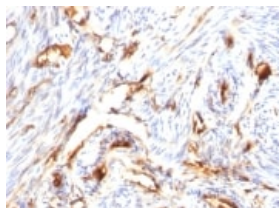
All lanes : Anti-beta 2 Microglobulin antibody [B2M/1118] (ab215882) at 2 µg/ml

Lane 1 : Thp-1 cell lysate

Lane 2 : Raji cell lysate

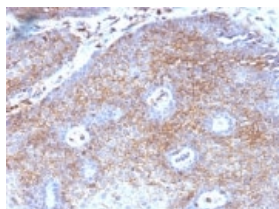
Predicted band size: 14 kDa

Western blot - Anti-beta 2 Microglobulin antibody [B2M/1118] (ab215882)



Immunohistochemical analysis of formalin-fixed, paraffin-embedded Human endometrial carcinoma tissue labeling beta 2 Microglobulin with ab215882 at 1µg/ml.

Immunohistochemistry (Formalin/PFA-fixed paraffin-embedded sections) - Anti-beta 2 Microglobulin antibody [B2M/1118] (ab215882)



Immunohistochemical analysis of formalin-fixed, paraffin-embedded Human cervical carcinoma tissue labeling beta 2 Microglobulin with ab215882 at 1µg/ml.

Immunohistochemistry (Formalin/PFA-fixed paraffin-embedded sections) - Anti-beta 2 Microglobulin antibody [B2M/1118] (ab215882)

Please note: All products are "FOR RESEARCH USE ONLY. NOT FOR USE IN DIAGNOSTIC PROCEDURES"

Our Abpromise to you: Quality guaranteed and expert technical support

- Replacement or refund for products not performing as stated on the datasheet
- Valid for 12 months from date of delivery
- Response to your inquiry within 24 hours
- We provide support in Chinese, English, French, German, Japanese and Spanish
- Extensive multi-media technical resources to help you
- We investigate all quality concerns to ensure our products perform to the highest standards

If the product does not perform as described on this datasheet, we will offer a refund or replacement. For full details of the Abpromise, please visit <https://www.abcam.com/abpromise> or contact our technical team.

Terms and conditions

- Guarantee only valid for products bought direct from Abcam or one of our authorized distributors