


Product datasheet

Anti-beta Actin antibody ab8227

★★★★★ [104 Abreviews](#) [3010 References](#) [10 Images](#)

Overview

Product name	Anti-beta Actin antibody
Description	Rabbit polyclonal to beta Actin
Host species	Rabbit
Specificity	The immunogen used for this product shares 77% homology with Gamma actin/actin cytoplasmic 2. Cross-reactivity with this protein has not been confirmed experimentally.
Tested applications	Suitable for: WB, IHC-P, ICC/IF
Species reactivity	Reacts with: Mouse, Rat, Rabbit, Chicken, Cow, Dog, Human, Xenopus laevis, Fish, Chinese hamster Predicted to work with: Sheep, Guinea pig, Pig, Drosophila melanogaster, Monkey, Zebrafish, Rhesus monkey 
Immunogen	Synthetic peptide. This information is proprietary to Abcam and/or its suppliers. (Peptide available as ab13772)
Positive control	WB: A431, HeLa, Jurkat, HEK-293, NIH/3T3, MDCK, EBTr, SL-29, CHO and PC-12 whole cell lysate. Rat liver tissue lysate. HeLa nuclear lysate. Fish and rabbit liver. Xenopus laevis embryo. ICC: SV40LT-SMC and NIH/3T3 cells. IHC-P: Rat small intestine tissue. Human colon tissue.
General notes	<p>For western blot, milk blocking is suitable for use with fluorescent detection systems. For western blot using chemiluminescent (ECL) systems we recommend BSA blocking.</p> <p>Abcam recommended secondaries - Goat Anti-Rabbit HRP (ab205718) and Goat Anti-Rabbit Alexa Fluor® 488 (ab150077).</p> <p>See other anti-rabbit secondary antibodies that can be used with this antibody.</p> <p>The Life Science industry has been in the grips of a reproducibility crisis for a number of years. Abcam is leading the way in addressing this with our range of recombinant monoclonal antibodies and knockout edited cell lines for gold-standard validation. Please check that this product meets your needs before purchasing.</p> <p>If you have any questions, special requirements or concerns, please send us an inquiry and/or contact our Support team ahead of purchase. Recommended alternatives for this product can be found below, along with publications, customer reviews and Q&As</p>

Properties

Form	Liquid
-------------	--------

Storage instructions	Shipped at 4°C. Store at +4°C short term (1-2 weeks). Upon delivery aliquot. Store at -20°C or -80°C. Avoid freeze / thaw cycle.
Storage buffer	pH: 7.40 Preservative: 0.02% Sodium azide Constituents: PBS, 1% BSA
	Batches of this product that have a concentration < 1mg/ml may have BSA added as a stabilising agent. If you would like information about the formulation of a specific lot, please contact our scientific support team who will be happy to help.
Purity	Immunogen affinity purified
Clonality	Polyclonal
Isotype	IgG

Applications

The Abpromise guarantee Our **Abpromise guarantee** covers the use of ab8227 in the following tested applications. The application notes include recommended starting dilutions; optimal dilutions/concentrations should be determined by the end user.

Application	Abreviews	Notes
WB	★★★★★ (83)	1/1000 - 1/5000. We recommend Goat Anti-Rabbit IgG H&L (HRP) (ab6721) secondary antibody . A stronger signal is observed in chemiluminescent western blot when using 2% BSA as the blocking agent. Milk blocking is suitable for use with fluorescent detection systems.
IHC-P	★★★★★ (2)	Use a concentration of 0.2 - 1 µg/ml. Perform heat mediated antigen retrieval before commencing with IHC staining protocol. We recommend Goat Anti-Rabbit IgG H&L (Biotin) (ab6720) secondary antibody or Goat Anti-Rabbit IgG Fc (HRP) (ab97200) secondary antibody .
ICC/IF	★★★★★ (5)	Use a concentration of 1 µg/ml.

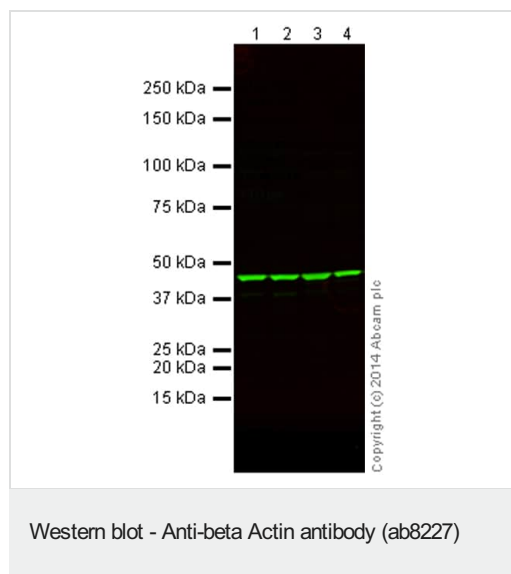
Target

Function	Actins are highly conserved proteins that are involved in various types of cell motility and are ubiquitously expressed in all eukaryotic cells.
Involvement in disease	Defects in ACTB are a cause of dystonia juvenile-onset (DYTJ) [MIM:607371]. DYTJ is a form of dystonia with juvenile onset. Dystonia is defined by the presence of sustained involuntary muscle contraction, often leading to abnormal postures. DYTJ patients manifest progressive, generalized, dopa-unresponsive dystonia, developmental malformations and sensory hearing loss.
Sequence similarities	Belongs to the actin family.
Post-translational modifications	ISGylated.

Cellular localization

Cytoplasm > cytoskeleton. Localized in cytoplasmic mRNP granules containing untranslated mRNAs.

Images



All lanes : Anti-beta Actin antibody (ab8227) at 1/1000 dilution

Lane 1 : A431 (human epidermoid carcinoma cell line) Whole Cell Lysate

Lane 2 : HEK-293 (human epithelial cell line from embryonic kidney) Whole Cell Lysate

Lane 3 : NIH/3T3 (mouse embryo fibroblast cell line) Whole Cell Lysate

Lane 4 : PC-12 (rat adrenal gland pheochromocytoma cell line) Whole Cell Lysate

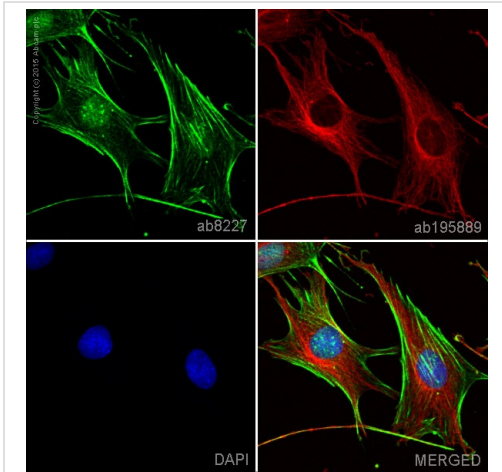
Lysates/proteins at 20 µg per lane.

Secondary

All lanes : Goat Anti-Rabbit IgG H&L (Alexa Fluor® 790) ([ab175781](#)) at 1/10000 dilution

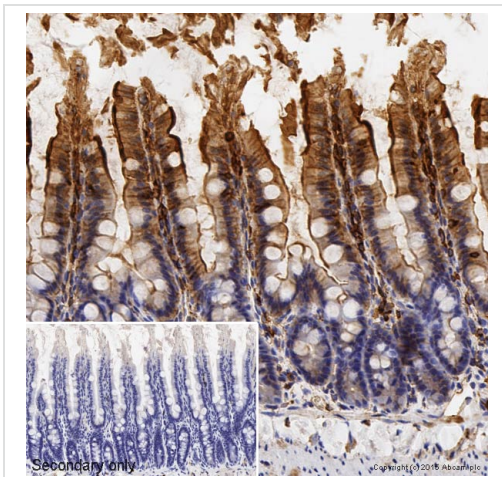
Observed band size: 42 kDa

This blot was produced using a 4-12% Bis-tris gel under the MOPS buffer system. The gel was run at 200V for 50 minutes before being transferred onto a nitrocellulose membrane at 30V for 70 minutes. The membrane was then blocked for an hour using 5% Milk before being incubated with ab8227 overnight at 4°C. Antibody binding was detected using **Goat Anti-Rabbit IgG H&L (Alexa Fluor® 790) (ab175781) secondary antibody** at a 1:10,000 dilution for 1hr at room temperature and then imaged using the Licor Odyssey CLx.



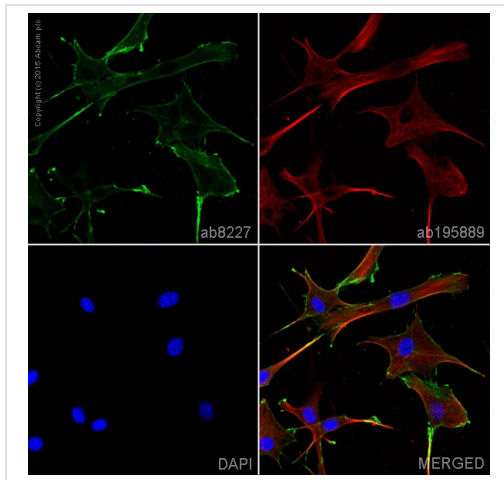
Immunocytochemistry/ Immunofluorescence - Anti-beta Actin antibody (ab8227)

ab8227 staining beta Actin in SV40LT-SMC (rat aortic smooth muscle cells transfected with SV40). The cells were fixed with 4% formaldehyde (10min), permeabilized with 0.1% Triton X-100 for 5 minutes and then blocked with 1% BSA/10% normal goat serum/0.3M glycine in 0.1%PBS-Tween for 1h. The cells were then incubated overnight at +4°C with ab8227 at 1µg/ml (detected with **ab150081**, Alexa Fluor® 488 Goat anti-Rabbit, 1µg/ml, shown in green); and **ab195889**, Mouse monoclonal [DM1A] to alpha Tubulin - Microtubule Marker (Alexa Fluor® 594), at 1/250 dilution (shown in red). Nuclear DNA was labelled with DAPI (shown in blue). Image was taken with a confocal microscope (Leica-Microsystems, TCS SP8).



Immunohistochemistry (Formalin/PFA-fixed paraffin-embedded sections) - Anti-beta Actin antibody (ab8227)

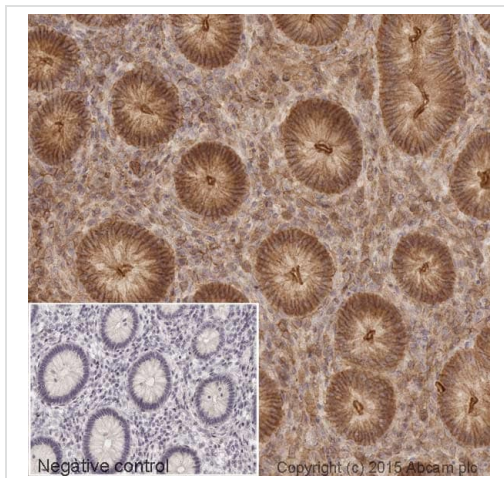
IHC image of ab8227 staining beta Actin in rat small intestine formalin fixed paraffin embedded tissue sections, performed on a Leica Bond. The section was pre-treated using heat mediated antigen retrieval with EDTA (epitope retrieval solution 2) for 20 mins. The section was then incubated with ab8227, 0.2µg/ml, for 15 mins at room temperature and detected using an HRP conjugated compact polymer system. DAB was used as the chromogen. The section was then counterstained with haematoxylin and mounted with DPX. No primary antibody was used in the secondary only control (shown on the inset). For other IHC staining systems (automated and non-automated) customers should optimize variable parameters such as antigen retrieval conditions, primary antibody concentration and antibody incubation times.



Immunocytochemistry/ Immunofluorescence - Anti-beta Actin antibody (ab8227)

ab8227 staining beta Actin in NIH/3T3 (mouse embryo fibroblast cell line) cells. The cells were fixed with 100% methanol (5min), permeabilized with 0.1% Triton X-100 for 5 minutes and then blocked with 1% BSA/10% normal goat serum/0.3M glycine in 0.1%PBS-Tween for 1h. The cells were then incubated overnight at +4°C with ab8227 at 1µg/ml (shown in green) and **ab195889**, Mouse monoclonal [DM1A] to alpha Tubulin - Microtubule Marker (Alexa Fluor® 594), at 1/250 dilution (shown in red). Nuclear DNA was labelled with DAPI (shown in blue).

Image was taken with a confocal microscope (Leica-Microsystems, TCS SP8).



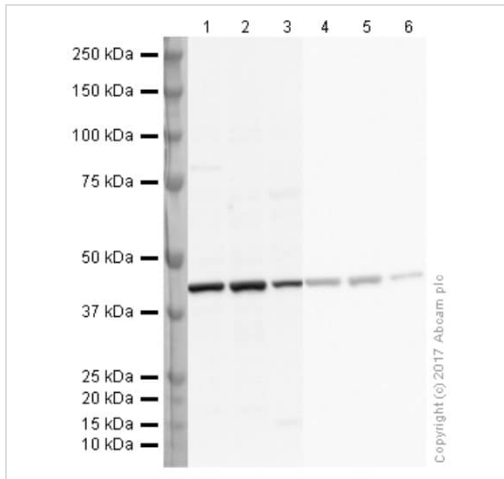
Immunohistochemistry (Formalin/PFA-fixed paraffin-embedded sections) - Anti-beta Actin antibody (ab8227)

IHC image of beta actin staining in a section of formalin-fixed paraffin-embedded normal human colon*. The section was pre-treated using pressure cooker heat mediated antigen retrieval with sodium citrate buffer (pH6) for 30mins. The section was then incubated with ab8227, 1/1000 dilution, for 15 mins at room temperature. A **goat anti-rabbit biotinylated secondary antibody (ab6720)**, 1/1000 dilution) was used to detect the primary, and visualized using an HRP conjugated ABC system. Streptavidin HRP was used, **ab7403** at a 1/10000 dilution. DAB was used as the chromogen (**ab103723**), diluted 1/100 and incubated for 10min at room temperature. The section was then counterstained with haematoxylin and mounted with DPX.

The inset negative control image is taken from an identical assay without primary antibody.

For other IHC staining systems (automated and non-automated) customers should optimize variable parameters such as antigen retrieval conditions, primary antibody concentration and antibody incubation times.

*Tissue obtained from the Human Research Tissue Bank, supported by the NIHR Cambridge Biomedical Research Centre



Western blot - Anti-beta Actin antibody (ab8227)

All lanes : Anti-beta Actin antibody (ab8227) at 1 µg/ml

Lane 1 : HeLa (human epithelial cell line from cervix adenocarcinoma) whole cell lysate (blocked with 2% BSA)

Lane 2 : NIH/3T3 (mouse embryo fibroblast cell line) whole cell lysate (blocked with 2% BSA)

Lane 3 : Rat Liver tissue lysate (blocked with 2% BSA)

Lane 4 : HeLa whole cell lysate (blocked with 3% Milk)

Lane 5 : NIH/3T3 whole cell lysate (blocked with 3% Milk)

Lane 6 : Rat Liver tissue lysate (blocked with 3% Milk)

Lysates/proteins at 10 µg per lane.

Secondary

All lanes : Goat Anti-Rabbit IgG H&L (HRP) at 1/50000 dilution

Developed using the ECL technique.

Performed under reducing conditions.

Observed band size: 45 kDa

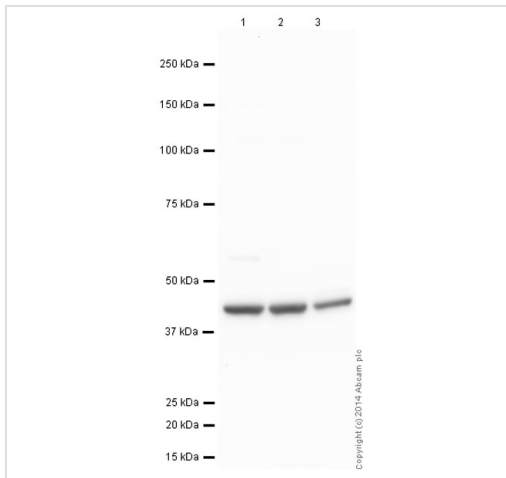
Exposure time: 10 seconds

Lanes 1-3: Blocked with 2% BSA

Lanes 4-6: Blocked with 3% Milk

This blot was produced using a 4-12% Bis-tris gel under the MOPS buffer system. The gel was run at 200V for 50 minutes before being transferred onto a Nitrocellulose membrane at 30V for 70 minutes.

The membrane was then blocked for an hour using 2% Bovine Serum Albumin or 3% Milk before being incubated with ab8227 overnight at 4°C. Antibody binding was detected using an anti rabbit HRP secondary antibody, and visualised using ECL development solution [ab133406](#)



Western blot - Anti-beta Actin antibody (ab8227)

All lanes : Anti-beta Actin antibody (ab8227) at 0.1 µg/ml

Lane 1 : HeLa (human epithelial cell line from cervix adenocarcinoma) Whole Cell Lysate

Lane 2 : NIH/3T3 (mouse embryonic fibroblast cell line) Whole Cell Lysate

Lane 3 : Liver (Rat) Tissue Lysate

Lysates/proteins at 10 µg per lane.

Secondary

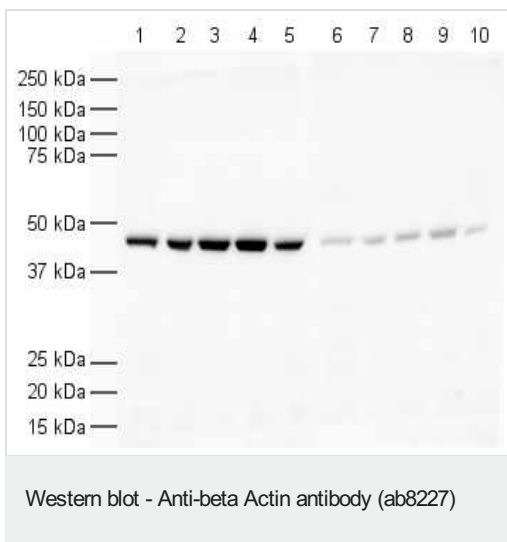
All lanes : Goat Anti-Rabbit IgG H&L (HRP) ([ab97051](#)) at 1/50000 dilution

Performed under reducing conditions.

Observed band size: 42 kDa

Exposure time: 1 minute

This blot was produced using a 4-12% Bis-tris gel under the MOPS buffer system. The gel was run at 200V for 50 minutes before being transferred onto a Nitrocellulose membrane at 30V for 70 minutes. The membrane was then blocked for an hour using 2% Bovine Serum Albumin before being incubated with ab8227 overnight at 4°C. Antibody binding was detected using an **anti-rabbit HRP** secondary antibody, and visualised using ECL development solution [ab133406](#)



All lanes : Anti-beta Actin antibody (ab8227) at 1/1000 dilution

Lane 1 : HeLa (human epithelial cell line from cervix adenocarcinoma) nuclear lysate

Lane 2 : HeLa whole cell lysate

Lane 3 : A431 (human epidermoid carcinoma cell line) cell lysate

Lane 4 : Jurkat (human T cell leukemia cell line from peripheral blood) cell lysate

Lane 5 : HEK-293 (human epithelial cell line from embryonic kidney) cell lysate

Lane 6 : HeLa nuclear lysate with Human beta Actin peptide (**ab13772**) at 1 µg/ml

Lane 7 : HeLa whole cell lysate with Human beta Actin peptide (**ab13772**) at 1 µg/ml

Lane 8 : A431 cell lysate with Human beta Actin peptide (**ab13772**) at 1 µg/ml

Lane 9 : Jurkat cell lysate with Human beta Actin peptide (**ab13772**) at 1 µg/ml

Lane 10 : HEK-293 cell lysate with Human beta Actin peptide (**ab13772**) at 1 µg/ml

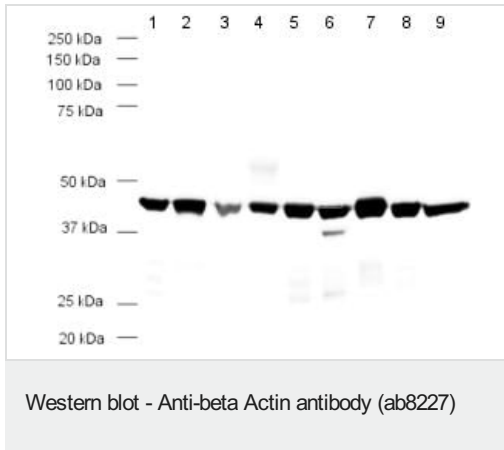
Lysates/proteins at 20 µg per lane.

Secondary

All lanes : Goat Anti-Rabbit IgG H&L (HRP) (**ab6721**) at 1/5000 dilution

Observed band size: 41.7 kDa

Exposure time: 5 seconds



All lanes : Anti-beta Actin antibody (ab8227) at 1/1000 dilution

Lane 1 : HeLa (Human epithelial cell line from cervix adenocarcinoma) cells

Lane 2 : NIH/3T3 (Mouse embryonic fibroblast cell line) cells

Lane 3 : Fish Liver

Lane 4 : Rabbit Liver

Lane 5 : MDCK (Canine kidney cell line) cells

Lane 6 : EBTr (cow trachea) cells

Lane 7 : SL-29 (chicken day 11 embryo) cells

Lane 8 : CHO (Chinese hamster ovary cell line) cells

Lane 9 : Xenopus laevis embryo

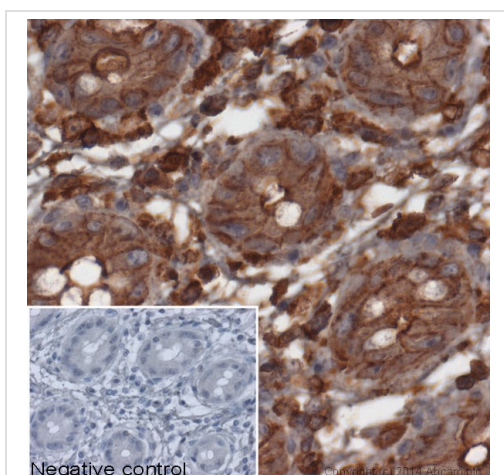
Lysates/proteins at 20 µg per lane.

Secondary

All lanes : Goat Anti-Rabbit IgG H&L (HRP) (**ab6721**) at 1/5000 dilution

Observed band size: 41.7 kDa

Exposure time: 30 seconds



IHC image of beta Actin staining in normal human colon, formalin-fixed and paraffin-embedded tissue*. The section was pre-treated using pressure cooker heat mediated antigen retrieval with sodium citrate buffer (pH6) for 30mins. The section was incubated with ab8227, 3µg/ml overnight at +4°C. A **anti-rabbit HRP secondary antibody (Ab97200, 1/200 dilution)** was used for 1hr at room temperature. The section was counterstained with haematoxylin and mounted with DPX.

The inset negative control image is taken from an identical assay without primary antibody.

*Tissue obtained from the Human Research Tissue Bank, supported by the NIHR Cambridge Biomedical Research Centre

Immunohistochemistry (Formalin/PFA-fixed paraffin-embedded sections) - Anti-beta Actin antibody (ab8227)

Please note: All products are "FOR RESEARCH USE ONLY. NOT FOR USE IN DIAGNOSTIC PROCEDURES"

Our Abpromise to you: Quality guaranteed and expert technical support

- Replacement or refund for products not performing as stated on the datasheet
- Valid for 12 months from date of delivery
- Response to your inquiry within 24 hours

- We provide support in Chinese, English, French, German, Japanese and Spanish
- Extensive multi-media technical resources to help you
- We investigate all quality concerns to ensure our products perform to the highest standards

If the product does not perform as described on this datasheet, we will offer a refund or replacement. For full details of the Abpromise, please visit <https://www.abcam.com/abpromise> or contact our technical team.

Terms and conditions

- Guarantee only valid for products bought direct from Abcam or one of our authorized distributors