

# Anti-beta Actin antibody - N-terminal ab209869

[2 References](#) [3 Images](#)

### Overview

<b>Product name</b>	Anti-beta Actin antibody - N-terminal
<b>Description</b>	Rabbit polyclonal to beta Actin - N-terminal
<b>Host species</b>	Rabbit
<b>Tested applications</b>	<b>Suitable for:</b> IHC-P, WB
<b>Species reactivity</b>	<b>Reacts with:</b> Zebrafish
<b>Immunogen</b>	Synthetic peptide within Zebrafish beta Actin aa 1-100 (N terminal). The exact immunogen sequence used to generate this antibody is proprietary information. If additional detail on the immunogen is needed to determine the suitability of the antibody for your needs, please <b><a href="#">contact</a></b> our Scientific Support team to discuss your requirements. Conjugated to a carrier protein. Database link: <b><a href="#">Q7ZVI7</a></b>
<b>Positive control</b>	Adult Zebrafish eye, brain, ovary, heart and liver tissue extracts; Zebrafish tissue; whole Zebrafish extract.
<b>General notes</b>	<p>The Life Science industry has been in the grips of a reproducibility crisis for a number of years. Abcam is leading the way in addressing this with our range of recombinant monoclonal antibodies and knockout edited cell lines for gold-standard validation. Please check that this product meets your needs before purchasing.</p> <p>If you have any questions, special requirements or concerns, please send us an inquiry and/or contact our Support team ahead of purchase. Recommended alternatives for this product can be found below, along with publications, customer reviews and Q&amp;As</p>

### Properties

<b>Form</b>	Liquid
<b>Storage instructions</b>	Shipped at 4°C. Store at +4°C short term (1-2 weeks). Upon delivery aliquot. Store at -20°C long term. Avoid freeze / thaw cycle.
<b>Storage buffer</b>	pH: 7.00 Preservative: 0.025% Proclin 300 Constituents: 79% PBS, 20% Glycerol (glycerin, glycerine)
<b>Purity</b>	Immunogen affinity purified
<b>Clonality</b>	Polyclonal
<b>Isotype</b>	IgG

## Applications

### The Abpromise guarantee

Our **Abpromise guarantee** covers the use of ab209869 in the following tested applications.

The application notes include recommended starting dilutions; optimal dilutions/concentrations should be determined by the end user.

Application	Abreviews	Notes
IHC-P		1/100 - 1/1000.
WB		1/500 - 1/3000. Predicted molecular weight: 42 kDa.

## Target

### Function

Actins are highly conserved proteins that are involved in various types of cell motility and are ubiquitously expressed in all eukaryotic cells.

### Involvement in disease

Defects in ACTB are a cause of dystonia juvenile-onset (DYTJ) [MIM:607371]. DYTJ is a form of dystonia with juvenile onset. Dystonia is defined by the presence of sustained involuntary muscle contraction, often leading to abnormal postures. DYTJ patients manifest progressive, generalized, dopa-unresponsive dystonia, developmental malformations and sensory hearing loss.

### Sequence similarities

Belongs to the actin family.

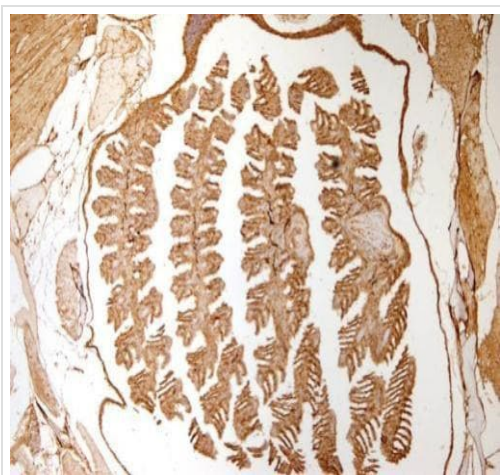
### Post-translational modifications

ISGylated.

### Cellular localization

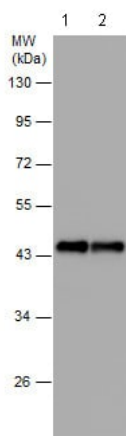
Cytoplasm > cytoskeleton. Localized in cytoplasmic mRNP granules containing untranslated mRNAs.

## Images



Immunohistochemical analysis of paraffin-embedded Zebrafish tissue labeling beta Actin with ab209869 at 1/300 dilution.

Immunohistochemistry (Formalin/PFA-fixed paraffin-embedded sections) - Anti-beta Actin antibody - N-terminal (ab209869)



Western blot - Anti-beta Actin antibody - N-terminal (ab209869)

**All lanes :** Anti-beta Actin antibody - N-terminal (ab209869) at 1/500 dilution

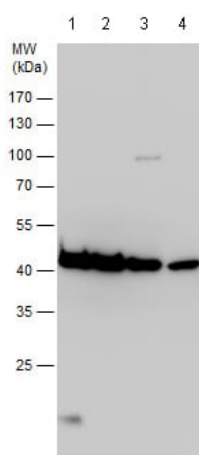
**Lane 1 :** Zebrafish heart tissue extract

**Lane 2 :** Whole Zebrafish tissue extract

Lysates/proteins at 30 µg per lane.

**Predicted band size:** 42 kDa

10% SDS-PAGE



Western blot - Anti-beta Actin antibody - N-terminal (ab209869)

**All lanes :** Anti-beta Actin antibody - N-terminal (ab209869) at 1/1000 dilution

**Lane 1 :** Zebrafish eye tissue extract

**Lane 2 :** Zebrafish brain tissue extract

**Lane 3 :** Zebrafish ovary tissue extract

**Lane 4 :** Zebrafish liver tissue extract

Lysates/proteins at 20 µg per lane.

**Predicted band size:** 42 kDa

10 % SDS-PAGE

**Please note:** All products are "FOR RESEARCH USE ONLY. NOT FOR USE IN DIAGNOSTIC PROCEDURES"

### Our Abpromise to you: Quality guaranteed and expert technical support

- Replacement or refund for products not performing as stated on the datasheet
- Valid for 12 months from date of delivery
- Response to your inquiry within 24 hours
- We provide support in Chinese, English, French, German, Japanese and Spanish
- Extensive multi-media technical resources to help you
- We investigate all quality concerns to ensure our products perform to the highest standards

If the product does not perform as described on this datasheet, we will offer a refund or replacement. For full details of the Abpromise, please visit <https://www.abcam.com/abpromise> or contact our technical team.

## Terms and conditions

---

- Guarantee only valid for products bought direct from Abcam or one of our authorized distributors