

Product datasheet

Anti-beta Casein antibody [EPR12179] α b205301

Recombinant RabMAb

★★★★★ [2 Abreviews](#) [1 References](#) [3 Images](#)

Overview

Product name	Anti-beta Casein antibody [EPR12179]
Description	Rabbit monoclonal [EPR12179] to beta Casein
Host species	Rabbit
Tested applications	Suitable for: IP, WB
Species reactivity	Reacts with: Human
Immunogen	Synthetic peptide. This information is proprietary to Abcam and/or its suppliers.
Positive control	Human milk lysate.
General notes	<p>This product is a recombinant monoclonal antibody, which offers several advantages including:</p> <ul style="list-style-type: none"> - High batch-to-batch consistency and reproducibility - Improved sensitivity and specificity - Long-term security of supply - Animal-free production <p>For more information see here.</p> <p>Our RabMAb[®] technology is a patented hybridoma-based technology for making rabbit monoclonal antibodies. For details on our patents, please refer to RabMAb[®] patents.</p>

Properties

Form	Liquid
Storage instructions	Shipped at 4°C. Store at +4°C short term (1-2 weeks). Upon delivery aliquot. Store at -20°C long term. Avoid freeze / thaw cycle.
Storage buffer	<p>pH: 7.2</p> <p>Preservative: 0.01% Sodium azide</p> <p>Constituents: 59% PBS, 40% Glycerol (glycerin, glycerine), 0.05% BSA</p>
Purity	Protein A purified
Clonality	Monoclonal
Clone number	EPR12179
Isotype	IgG

Applications

The Abpromise guarantee

Our **Abpromise guarantee** covers the use of ab205301 in the following tested applications.

The application notes include recommended starting dilutions; optimal dilutions/concentrations should be determined by the end user.

Application	Abreviews	Notes
IP		1/60.
WB	★★★★★ (2)	1/1000. Detects a band of approximately 25 kDa (predicted molecular weight: 25 kDa).

Target

Function

Important role in determination of the surface properties of the casein micelles.

Tissue specificity

Mammary gland specific. Secreted in milk.

Sequence similarities

Belongs to the beta-casein family.

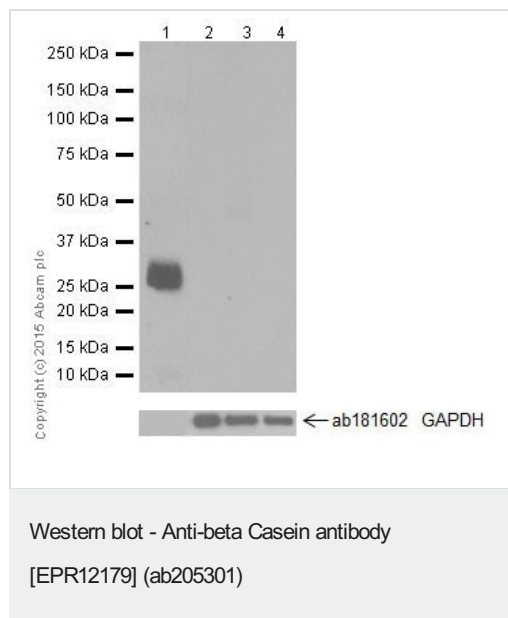
Post-translational modifications

Form 1-P is phosphorylated once; half of the molecules are phosphorylated on Ser-24, half on Ser-25.

Cellular localization

Secreted.

Images



All lanes : Anti-beta Casein antibody [EPR12179] (ab205301) at 1/1000 dilution

Lane 1 : Human milk lysate

Lane 2 : Human fetal brain lysate

Lane 3 : Human fetal heart lysate

Lane 4 : Human fetal kidney lysate

Lysates/proteins at 10 µg per lane.

Secondary

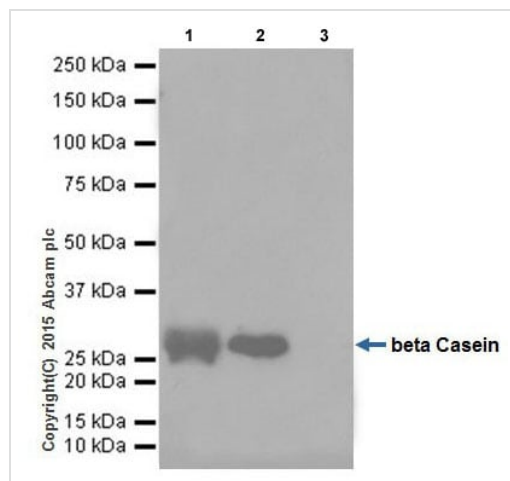
All lanes : Anti-Rabbit IgG (HRP), specific to the non-reduced form of IgG at 1/10000 dilution

Predicted band size: 25 kDa

Observed band size: 25 kDa

Exposure time: 5 seconds

Blocking/Dilution buffer: 5% NFDM/TBST.



Immunoprecipitation - Anti-beta Casein antibody
[EPR12179] (ab205301)

beta Casein was immunoprecipitated from 1mg of Human milk lysate with ab205301 at 1/60 dilution. Western blot was performed from the immunoprecipitate using ab205301 at 1/1000 dilution. VeriBlot for IP Detection Reagent (HRP) (**ab131366**) was used for detection at 1/10000 dilution.

Lane 1: Human milk lysate 10 µg (Input). Lane 2: ab205301 IP in Human milk lysate. Lane 3: Rabbit monoclonal IgG (**ab172730**) instead of ab205301 in Human milk lysate.

Blocking and dilution buffer and concentration: 5% NFDM/TBST.

Exposure time: 30 seconds

Why choose a recombinant antibody?



Research with confidence
Consistent and reproducible results



Long-term and scalable supply
Recombinant technology



Success from the first experiment
Confirmed specificity



Ethical standards compliant
Animal-free production

Anti-beta Casein antibody [EPR12179] (ab205301)

Please note: All products are "FOR RESEARCH USE ONLY. NOT FOR USE IN DIAGNOSTIC PROCEDURES"

Our Abpromise to you: Quality guaranteed and expert technical support

- Replacement or refund for products not performing as stated on the datasheet
- Valid for 12 months from date of delivery
- Response to your inquiry within 24 hours
- We provide support in Chinese, English, French, German, Japanese and Spanish
- Extensive multi-media technical resources to help you
- We investigate all quality concerns to ensure our products perform to the highest standards

If the product does not perform as described on this datasheet, we will offer a refund or replacement. For full details of the Abpromise, please visit <https://www.abcam.com/abpromise> or contact our technical team.

Terms and conditions

- Guarantee only valid for products bought direct from Abcam or one of our authorized distributors