

Anti-beta Casein antibody [EPR12179] - BSA and Azide free ab232662

Recombinant RabMAb

3 Images

Overview

Product name	Anti-beta Casein antibody [EPR12179] - BSA and Azide free
Description	Rabbit monoclonal [EPR12179] to beta Casein - BSA and Azide free
Host species	Rabbit
Tested applications	Suitable for: IP, WB
Species reactivity	Reacts with: Human
Immunogen	Synthetic peptide. This information is proprietary to Abcam and/or its suppliers.
Positive control	WB: Human milk lysate.
General notes	ab232662 is the carrier-free version of ab205301 .

Our **carrier-free** antibodies are typically supplied in a PBS-only formulation, purified and free of BSA, sodium azide and glycerol. The carrier-free buffer and high concentration allow for increased conjugation efficiency.

This conjugation-ready format is designed for use with fluorochromes, metal isotopes, oligonucleotides, and enzymes, which makes them ideal for antibody labelling, functional and cell-based assays, flow-based assays (e.g. mass cytometry) and Multiplex Imaging applications.

Use our **conjugation kits** for antibody conjugates that are ready-to-use in as little as 20 minutes with <1 minute hands-on-time and 100% antibody recovery: available for fluorescent dyes, HRP, biotin and gold.

This product is compatible with the Maxpar[®] Antibody Labeling Kit from Fluidigm, without the need for antibody preparation. Maxpar[®] is a trademark of Fluidigm Canada Inc.

This product is a recombinant monoclonal antibody, which offers several advantages including:

- High batch-to-batch consistency and reproducibility
- Improved sensitivity and specificity
- Long-term security of supply
- Animal-free production

For more information [see here](#).

Our RabMAb[®] technology is a patented hybridoma-based technology for making rabbit monoclonal antibodies. For details on our patents, please refer to [RabMAb[®] patents](#).

Properties

Form	Liquid
Storage instructions	Shipped at 4°C. Store at +4°C. Do Not Freeze.
Storage buffer	pH: 7.2 Constituent: PBS
Carrier free	Yes
Purity	Protein A purified
Clonality	Monoclonal
Clone number	EPR12179
Isotype	IgG

Applications

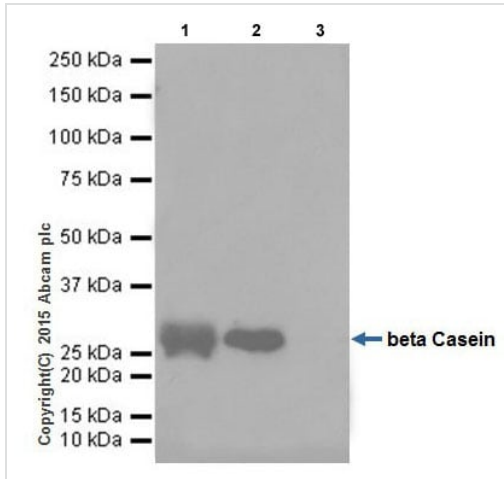
The Abpromise guarantee Our **Abpromise guarantee** covers the use of ab232662 in the following tested applications. The application notes include recommended starting dilutions; optimal dilutions/concentrations should be determined by the end user.

Application	Abreviews	Notes
IP		Use at an assay dependent concentration.
WB		Use at an assay dependent concentration. Predicted molecular weight: 25 kDa.

Target

Function	Important role in determination of the surface properties of the casein micelles.
Tissue specificity	Mammary gland specific. Secreted in milk.
Sequence similarities	Belongs to the beta-casein family.
Post-translational modifications	Form 1-P is phosphorylated once; half of the molecules are phosphorylated on Ser-24, half on Ser-25.
Cellular localization	Secreted.

Images



Immunoprecipitation - Anti-beta Casein antibody
[EPR12179] - BSA and Azide free (ab232662)

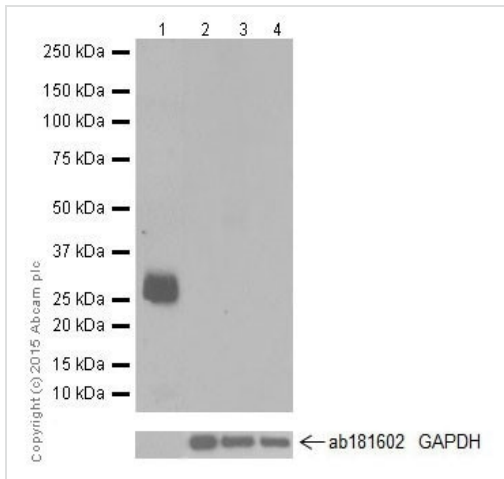
beta Casein was immunoprecipitated from 1 mg of Human milk lysate with **ab205301** at 1/60 dilution. Western blot was performed from the immunoprecipitate using **ab205301** at 1/1000 dilution. VeriBlot for IP Detection Reagent (HRP) (**ab131366**) was used for detection at 1/10000 dilution.

Lane 1: Human milk lysate 10 µg (Input). Lane 2: **ab205301** IP in Human milk lysate. Lane 3: Rabbit monoclonal IgG (**ab172730**) instead of **ab205301** in Human milk lysate.

Blocking and dilution buffer and concentration: 5% NFDm/TBST.

Exposure time: 30 seconds

This data was developed using the same antibody clone in a different buffer formulation containing PBS, BSA, glycerol, and sodium azide (**ab205301**).



Western blot - Anti-beta Casein antibody
[EPR12179] - BSA and Azide free (ab232662)

All lanes : Anti-beta Casein antibody [EPR12179] (**ab205301**) at 1/1000 dilution

Lane 1 : Human milk lysate

Lane 2 : Human fetal brain lysate

Lane 3 : Human fetal heart lysate

Lane 4 : Human fetal kidney lysate

Lysates/proteins at 10 µg per lane.

Secondary

All lanes : Anti-Rabbit IgG (HRP), specific to the non-reduced form of IgG at 1/10000 dilution


Predicted band size: 25 kDa

Exposure time: 5 seconds

Blocking/Dilution buffer: 5% NFDm/TBST.

This data was developed using the same antibody clone in a different buffer formulation containing PBS, BSA, glycerol, and sodium azide ([ab205301](#)).

Why choose a recombinant antibody?



- Research with confidence**
Consistent and reproducible results
- Long-term and scalable supply**
Recombinant technology
- Success from the first experiment**
Confirmed specificity
- Ethical standards compliant**
Animal-free production

Anti-beta Casein antibody [EPR12179] - BSA and Azide free (ab232662)

Please note: All products are "FOR RESEARCH USE ONLY. NOT FOR USE IN DIAGNOSTIC PROCEDURES"

Our Abpromise to you: Quality guaranteed and expert technical support

- Replacement or refund for products not performing as stated on the datasheet
- Valid for 12 months from date of delivery
- Response to your inquiry within 24 hours
- We provide support in Chinese, English, French, German, Japanese and Spanish
- Extensive multi-media technical resources to help you
- We investigate all quality concerns to ensure our products perform to the highest standards

If the product does not perform as described on this datasheet, we will offer a refund or replacement. For full details of the Abpromise, please visit <https://www.abcam.com/abpromise> or contact our technical team.

Terms and conditions

- Guarantee only valid for products bought direct from Abcam or one of our authorized distributors