

Product datasheet

Anti-beta Crystallin A3 antibody [EPR9586] ab151722

Recombinant RabMAb

[5 References](#) [3 Images](#)

Overview

Product name	Anti-beta Crystallin A3 antibody [EPR9586]
Description	Rabbit monoclonal [EPR9586] to beta Crystallin A3
Host species	Rabbit
Tested applications	Suitable for: WB, ICC/IF Unsuitable for: Flow Cyt or IHC-P
Species reactivity	Reacts with: Mouse, Rat, Human
Immunogen	Synthetic peptide. This information is proprietary to Abcam and/or its suppliers.
Positive control	Mouse and Rat eyeball lysates; Y79 cells.
General notes	This product is a recombinant monoclonal antibody, which offers several advantages including: <ul style="list-style-type: none"> - High batch-to-batch consistency and reproducibility - Improved sensitivity and specificity - Long-term security of supply - Animal-free production For more information see here . Our RabMAb [®] technology is a patented hybridoma-based technology for making rabbit monoclonal antibodies. For details on our patents, please refer to RabMAb[®] patents .

Properties

Form	Liquid
Storage instructions	Shipped at 4°C. Store at -20°C.
Storage buffer	pH: 7.2 Preservative: 0.01% Sodium azide Constituents: 9% PBS, 40% Glycerol (glycerin, glycerine), 0.05% BSA, 50% Tissue culture supernatant
Purity	Tissue culture supernatant
Clonality	Monoclonal
Clone number	EPR9586
Isotype	IgG

Applications

The Abpromise guarantee

Our **Abpromise guarantee** covers the use of ab151722 in the following tested applications.

The application notes include recommended starting dilutions; optimal dilutions/concentrations should be determined by the end user.

Application	Abreviews	Notes
WB		1/10000 - 1/50000. Predicted molecular weight: 25 kDa.
ICC/IF		1/50 - 1/100.

Application notes

Is unsuitable for Flow Cyt or IHC-P.

Target

Function

Crystallins are the dominant structural components of the vertebrate eye lens.

Involvement in disease

Defects in CRYBA1 are the cause of cataract congenital zonular with sutural opacities (CCZS) [MIM:600881]. A form of zonular cataract. Zonular or lamellar cataracts are concentric opacities, broad or narrow, usually consisting of powdery white dots affecting one lamella or zonule of an otherwise clear lens.

Sequence similarities

Belongs to the beta/gamma-crystallin family.
Contains 4 beta/gamma crystallin 'Greek key' domains.

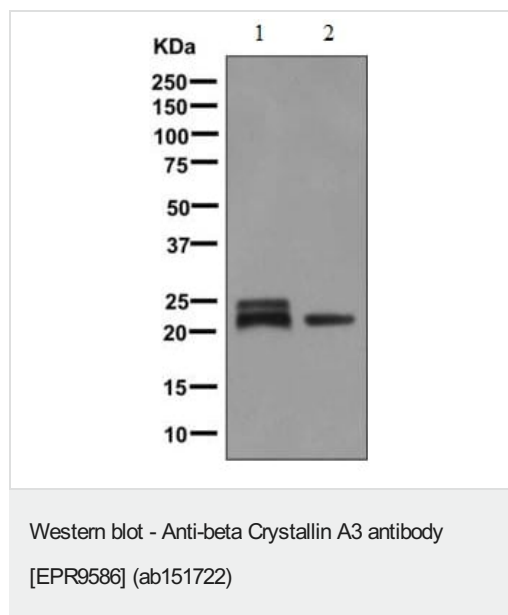
Domain

Has a two-domain beta-structure, folded into four very similar Greek key motifs.

Post-translational modifications

Specific cleavages in the N-terminal arm occur during lens maturation and give rise to several truncated forms. Cleavages do not seem to have adverse effects on solubility.
S-methylation and glutathionylation occur in normal young lenses and do not seem to be detrimental.
Isoform A1 initiator methionine is removed. The new N-terminal amino acid is then N-acetylated.

Images



All lanes : Anti-beta Crystallin A3 antibody [EPR9586] (ab151722)
at 1/10000 dilution

Lane 1 : Mouse eyeball lysate

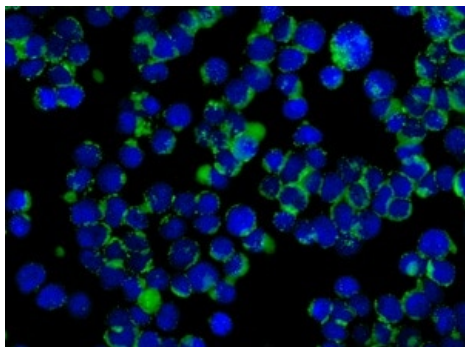
Lane 2 : Rat eyeball lysate

Lysates/proteins at 10 µg per lane.

Secondary

All lanes : Goat anti-rabbit HRP at 1/2000 dilution

Predicted band size: 25 kDa



Immunofluorescent analysis of Y79 cells labeling beta Crystallin A3 with ab151722 at 1/50 dilution.

Immunocytochemistry/ Immunofluorescence - Anti-beta Crystallin A3 antibody [EPR9586] (ab151722)

Why choose a recombinant antibody?



Research with confidence
Consistent and reproducible results



Long-term and scalable supply
Recombinant technology



Success from the first experiment
Confirmed specificity



Ethical standards compliant
Animal-free production

Anti-beta Crystallin A3 antibody [EPR9586] (ab151722)

Please note: All products are "FOR RESEARCH USE ONLY. NOT FOR USE IN DIAGNOSTIC PROCEDURES"

Our Abpromise to you: Quality guaranteed and expert technical support

- Replacement or refund for products not performing as stated on the datasheet
- Valid for 12 months from date of delivery
- Response to your inquiry within 24 hours
- We provide support in Chinese, English, French, German, Japanese and Spanish
- Extensive multi-media technical resources to help you
- We investigate all quality concerns to ensure our products perform to the highest standards

If the product does not perform as described on this datasheet, we will offer a refund or replacement. For full details of the Abpromise, please visit <https://www.abcam.com/abpromise> or contact our technical team.

Terms and conditions

- Guarantee only valid for products bought direct from Abcam or one of our authorized distributors