




## Product datasheet

### Anti-beta Sarcoglycan antibody ab83699

★★★★★ [1 Abreviews](#) [1 References](#) [2 Images](#)

#### Overview

<b>Product name</b>	Anti-beta Sarcoglycan antibody
<b>Description</b>	Rabbit polyclonal to beta Sarcoglycan
<b>Host species</b>	Rabbit
<b>Tested applications</b>	<b>Suitable for:</b> WB
<b>Species reactivity</b>	<b>Reacts with:</b> Human <b>Predicted to work with:</b> Mouse, Rat, Rabbit, Horse, Guinea pig, Cow, Dog 
<b>Immunogen</b>	Synthetic peptide corresponding to a region within internal sequence amino acids 180-229 ( FSTDYETHEFHLP SGVKSLNVQKASTERITSNATSDLNKVDGRAIMRGN ) of Human beta Sarcoglycan (NP_000223)  <a href="#">Run BLAST with</a>  <a href="#">Run BLAST with</a>
<b>Positive control</b>	WB: Human heart and human fetal heart lysates.
<b>General notes</b>	<p>The Life Science industry has been in the grips of a reproducibility crisis for a number of years. Abcam is leading the way in addressing this with our range of recombinant monoclonal antibodies and knockout edited cell lines for gold-standard validation. Please check that this product meets your needs before purchasing.</p> <p>If you have any questions, special requirements or concerns, please send us an inquiry and/or contact our Support team ahead of purchase. Recommended alternatives for this product can be found below, along with publications, customer reviews and Q&amp;As</p>

#### Properties

<b>Form</b>	Liquid
<b>Storage instructions</b>	Shipped at 4°C. Store at +4°C short term (1-2 weeks). Upon delivery aliquot. Store at -20°C long term. Avoid freeze / thaw cycle.
<b>Storage buffer</b>	pH: 7.2 Preservative: 0.09% Sodium azide Constituents: 2% Sucrose, PBS
<b>Purity</b>	Immunogen affinity purified
<b>Clonality</b>	Polyclonal

Isotype IgG

Applications

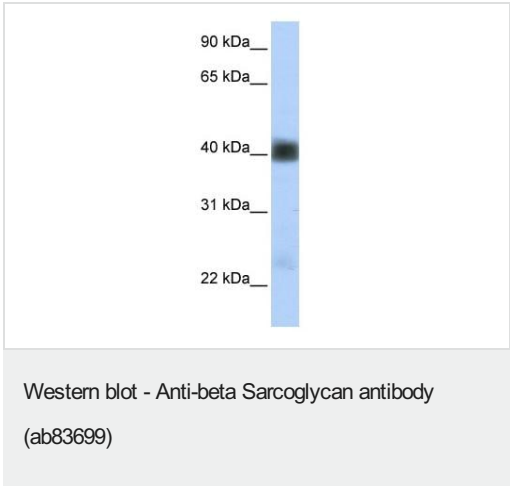
**The Abpromise guarantee** Our **Abpromise guarantee** covers the use of ab83699 in the following tested applications. The application notes include recommended starting dilutions; optimal dilutions/concentrations should be determined by the end user.

Application	Abreviews	Notes
WB	★★★★★ (1)	Use a concentration of 1 µg/ml. Predicted molecular weight: 35 kDa. Good results were obtained when blocked with 5% non-fat dry milk in 0.05% PBS-T.

Target

Function	Component of the sarcoglycan complex, a subcomplex of the dystrophin-glycoprotein complex which forms a link between the F-actin cytoskeleton and the extracellular matrix.
Tissue specificity	Highest expression in heart and skeletal muscle. Low expression in brain, kidney, placenta, pancreas and lung. High expression in fetal brain. Also found in fetal lung, kidney and liver.
Involvement in disease	Limb-girdle muscular dystrophy 2E
Sequence similarities	Belongs to the sarcoglycan beta/delta/gamma/zeta family.
Post-translational modifications	Disulfide bonds are present.
Cellular localization	Cell membrane, sarcolemma. Cytoplasm, cytoskeleton.

Images

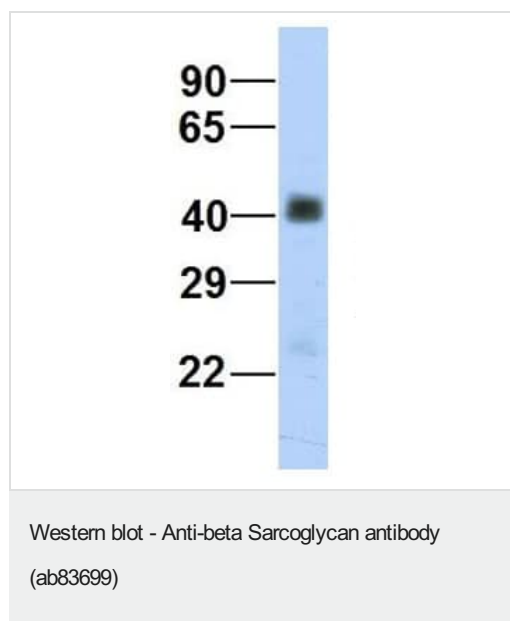


Anti-beta Sarcoglycan antibody (ab83699) at 1 µg/ml (in 5% skim milk / PBS buffer) + Human heart lysate at 10 µg

**Secondary**  
HRP conjugated anti-Rabbit IgG at 1/50000 dilution

**Predicted band size:** 35 kDa  
**Observed band size:** 40 kDa

Gel concentration: 12%



Anti-beta Sarcoglycan antibody (ab83699) at 1 µg/ml + Human fetal heart lysate at 10 µg

**Predicted band size:** 35 kDa

**Please note:** All products are "FOR RESEARCH USE ONLY. NOT FOR USE IN DIAGNOSTIC PROCEDURES"

#### Our Abpromise to you: Quality guaranteed and expert technical support

---

- Replacement or refund for products not performing as stated on the datasheet
- Valid for 12 months from date of delivery
- Response to your inquiry within 24 hours
- We provide support in Chinese, English, French, German, Japanese and Spanish
- Extensive multi-media technical resources to help you
- We investigate all quality concerns to ensure our products perform to the highest standards

If the product does not perform as described on this datasheet, we will offer a refund or replacement. For full details of the Abpromise, please visit <https://www.abcam.com/abpromise> or contact our technical team.

#### Terms and conditions

---

- Guarantee only valid for products bought direct from Abcam or one of our authorized distributors