

Product datasheet

Anti-BFL-1/GRS antibody ab45413

[1 Abreviews](#) [9 References](#) [3 Images](#)

Overview

Product name	Anti-BFL-1/GRS antibody
Description	Rabbit polyclonal to BFL-1/GRS
Host species	Rabbit
Specificity	This antibody is specific for Bcl2A1 / GRS.
Tested applications	Suitable for: IHC-P, WB, ICC
Species reactivity	Reacts with: Mouse, Human
Immunogen	Synthetic peptide corresponding to Human BFL-1/GRS (C terminal).
Positive control	WB: Human lung and kidney tissue. IHC: Mouse kidney tissue. ICC: Mouse kidney cells.
General notes	<p>The Life Science industry has been in the grips of a reproducibility crisis for a number of years. Abcam is leading the way in addressing this with our range of recombinant monoclonal antibodies and knockout edited cell lines for gold-standard validation. Please check that this product meets your needs before purchasing.</p> <p>If you have any questions, special requirements or concerns, please send us an inquiry and/or contact our Support team ahead of purchase. Recommended alternatives for this product can be found below, along with publications, customer reviews and Q&As</p>

Properties

Form	Liquid
Storage instructions	Shipped at 4°C. Store at +4°C.
Storage buffer	pH: 7.2 Preservative: 0.02% Sodium azide Constituent: PBS
Purity	Immunogen affinity purified
Clonality	Polyclonal
Isotype	IgG

Applications

Our **[Abpromise guarantee](#)** covers the use of ab45413 in the following tested applications.

The Abpromise guarantee

The application notes include recommended starting dilutions; optimal dilutions/concentrations should be determined by the end user.

Application	Abreviews	Notes
IHC-P		Use a concentration of 10 - 20 µg/ml. IHC-P suitable for Mouse samples only
WB		Use a concentration of 0.5 - 1 µg/ml. Predicted molecular weight: 20 kDa. WB suitable for Human samples only
ICC		Use a concentration of 20 µg/ml. ICC suitable for Mouse samples only

Target

Function

Retards apoptosis induced by IL-3 deprivation. May function in the response of hemopoietic cells to external signals and in maintaining endothelial survival during infection.

Tissue specificity

Seems to be restricted to the hematopoietic compartment. Expressed in peripheral blood, spleen, and bone marrow, at moderate levels in lung, small intestine and testis, at a minimal levels in other tissues. Also found in vascular smooth muscle cells and hematopoietic malignancies.

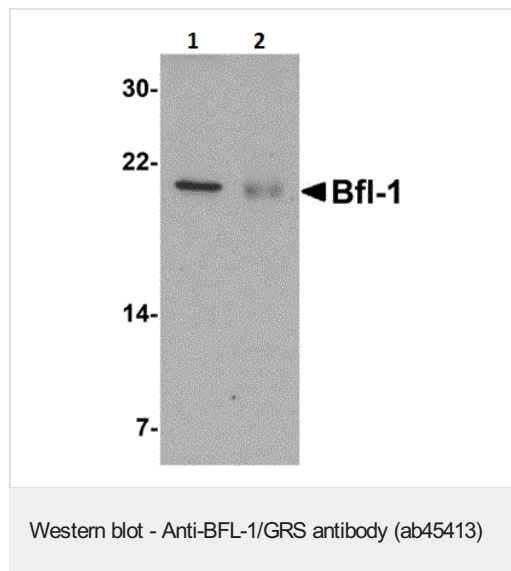
Sequence similarities

Belongs to the Bcl-2 family.

Cellular localization

Cytoplasm.

Images

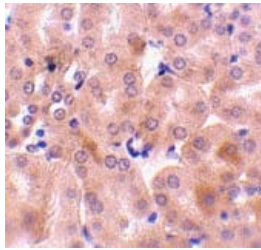


All lanes : Anti-BFL-1/GRS antibody (ab45413) at 1 µg/ml

Lane 1 : Human kidney tissue lysate

Lane 2 : Human lung tissue lysate

Predicted band size: 20 kDa



ab45413 at 10µg/ml staining BFL-1/GRS in mouse kidney tissue by IHC

Immunohistochemistry (Formalin/PFA-fixed paraffin-embedded sections) - Anti-BFL-1/GRS antibody (ab45413)

Immunocytochemistry - Anti-BFL-1/GRS antibody (ab45413)

Immunocytochemistry of BFL-1/GRS in Mouse Kidney cells using ab45413 at 20 ug/ml.

Please note: All products are "FOR RESEARCH USE ONLY. NOT FOR USE IN DIAGNOSTIC PROCEDURES"

Our Abpromise to you: Quality guaranteed and expert technical support

- Replacement or refund for products not performing as stated on the datasheet
- Valid for 12 months from date of delivery
- Response to your inquiry within 24 hours
- We provide support in Chinese, English, French, German, Japanese and Spanish
- Extensive multi-media technical resources to help you
- We investigate all quality concerns to ensure our products perform to the highest standards

If the product does not perform as described on this datasheet, we will offer a refund or replacement. For full details of the Abpromise, please visit <https://www.abcam.com/abpromise> or contact our technical team.

Terms and conditions

- Guarantee only valid for products bought direct from Abcam or one of our authorized distributors