

## Product datasheet

# Anti-BFL-1/GRS antibody ab45414

[2 References](#) [1 Image](#)

### Overview

---

<b>Product name</b>	Anti-BFL-1/GRS antibody
<b>Description</b>	Rabbit polyclonal to BFL-1/GRS
<b>Host species</b>	Rabbit
<b>Specificity</b>	At least two isoforms of Bcl2A1/GRS are known to exist; this antibody will detect both isoforms.
<b>Tested applications</b>	<b>Suitable for:</b> WB
<b>Species reactivity</b>	<b>Reacts with:</b> Human
<b>Immunogen</b>	Synthetic peptide corresponding to Human BFL-1/GRS (N terminal). A 14 amino acid peptide from near the amino terminus of human BFL-1/GRS Database link: <a href="#">Q16548</a>
<b>Positive control</b>	WB: Human kidney tissue lysate.
<b>General notes</b>	<p>The Life Science industry has been in the grips of a reproducibility crisis for a number of years. Abcam is leading the way in addressing this with our range of recombinant monoclonal antibodies and knockout edited cell lines for gold-standard validation. Please check that this product meets your needs before purchasing.</p> <p>If you have any questions, special requirements or concerns, please send us an inquiry and/or contact our Support team ahead of purchase. Recommended alternatives for this product can be found below, along with publications, customer reviews and Q&amp;As</p>

### Properties

---

<b>Form</b>	Liquid
<b>Storage instructions</b>	Shipped at 4°C. Store at +4°C short term (1-2 weeks). Store at +4°C.
<b>Storage buffer</b>	pH: 7.2 Preservative: 0.02% Sodium azide Constituent: PBS
<b>Purity</b>	Immunogen affinity purified
<b>Clonality</b>	Polyclonal
<b>Isotype</b>	IgG

### Applications

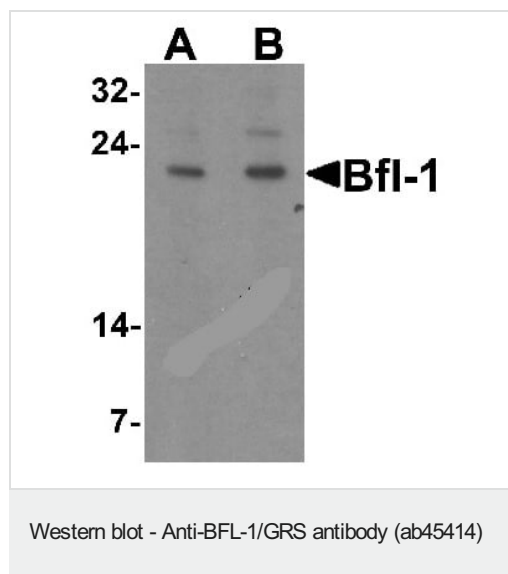
**The Abpromise guarantee** Our **Abpromise guarantee** covers the use of ab45414 in the following tested applications. The application notes include recommended starting dilutions; optimal dilutions/concentrations should be determined by the end user.

Application	Abreviews	Notes
WB		Use a concentration of 1 - 2 µg/ml. Detects a band of approximately 39 kDa (predicted molecular weight: 20 kDa).

**Target**

<b>Function</b>	Retards apoptosis induced by IL-3 deprivation. May function in the response of hemopoietic cells to external signals and in maintaining endothelial survival during infection.
<b>Tissue specificity</b>	Seems to be restricted to the hematopoietic compartment. Expressed in peripheral blood, spleen, and bone marrow, at moderate levels in lung, small intestine and testis, at a minimal levels in other tissues. Also found in vascular smooth muscle cells and hematopoietic malignancies.
<b>Sequence similarities</b>	Belongs to the Bcl-2 family.
<b>Cellular localization</b>	Cytoplasm.

**Images**



**Lane 1** : Anti-BFL-1/GRS antibody (ab45414) at 1 µg/ml

**Lane 2** : Anti-BFL-1/GRS antibody (ab45414) at 2 µg/ml

**All lanes** : Human kidney tissue lysate

**Predicted band size:** 20 kDa

**Observed band size:** 20 kDa

**Please note:** All products are "FOR RESEARCH USE ONLY. NOT FOR USE IN DIAGNOSTIC PROCEDURES"

**Our Abpromise to you: Quality guaranteed and expert technical support**

- Replacement or refund for products not performing as stated on the datasheet
- Valid for 12 months from date of delivery
- Response to your inquiry within 24 hours
- We provide support in Chinese, English, French, German, Japanese and Spanish

- Extensive multi-media technical resources to help you
- We investigate all quality concerns to ensure our products perform to the highest standards

If the product does not perform as described on this datasheet, we will offer a refund or replacement. For full details of the Abpromise, please visit <https://www.abcam.com/abpromise> or contact our technical team.

### **Terms and conditions**

---

- Guarantee only valid for products bought direct from Abcam or one of our authorized distributors