


## Product datasheet

### Anti-BIG1 antibody ab72061

★★★★★ [1 Abreviews](#) [1 References](#) [3 Images](#)

#### Overview

<b>Product name</b>	Anti-BIG1 antibody
<b>Description</b>	Rabbit polyclonal to BIG1
<b>Host species</b>	Rabbit
<b>Tested applications</b>	<b>Suitable for:</b> IHC-P, WB, IP
<b>Species reactivity</b>	<b>Reacts with:</b> Mouse, Human <b>Predicted to work with:</b> Rat, Cow, Dog, Pig, Chimpanzee, Rhesus monkey, Gorilla, Chinese hamster, Orangutan 
<b>Immunogen</b>	Synthetic peptide corresponding to Human BIG1 (C terminal). Corresponding to a region between residue 1800 and the C-terminus (residue 1849) of human BIG1 (according to NP_006412.2) Database link: <a href="#">Q9Y6D6</a>
<b>Positive control</b>	Whole cell lysate from HeLa, 293T or NIH3T3 cells.
<b>General notes</b>	<p>The Life Science industry has been in the grips of a reproducibility crisis for a number of years. Abcam is leading the way in addressing this with our range of recombinant monoclonal antibodies and knockout edited cell lines for gold-standard validation. Please check that this product meets your needs before purchasing.</p> <p>If you have any questions, special requirements or concerns, please send us an inquiry and/or contact our Support team ahead of purchase. Recommended alternatives for this product can be found below, along with publications, customer reviews and Q&amp;As</p>

#### Properties

<b>Form</b>	Liquid
<b>Storage instructions</b>	Shipped at 4°C. Upon delivery aliquot and store at -20°C. Avoid freeze / thaw cycles.
<b>Storage buffer</b>	pH: 7 Preservative: 0.09% Sodium azide Constituents: 1.815% Tris, 1.764% Sodium citrate, 0.021% PBS
<b>Purity</b>	Immunogen affinity purified
<b>Clonality</b>	Polyclonal
<b>Isotype</b>	IgG

## Applications

### The Abpromise guarantee

Our **Abpromise guarantee** covers the use of ab72061 in the following tested applications.

The application notes include recommended starting dilutions; optimal dilutions/concentrations should be determined by the end user.

Application	Abreviews	Notes
IHC-P		1/500 - 1/2000. Perform heat mediated antigen retrieval with Tris/EDTA buffer pH 9.0 before commencing with IHC staining protocol.
WB	★★★★★ (1)	1/1000 - 1/10000. Detects a band of approximately 250 kDa (predicted molecular weight: 208 kDa).
IP		Use at 2-5 µg/mg of lysate.

## Target

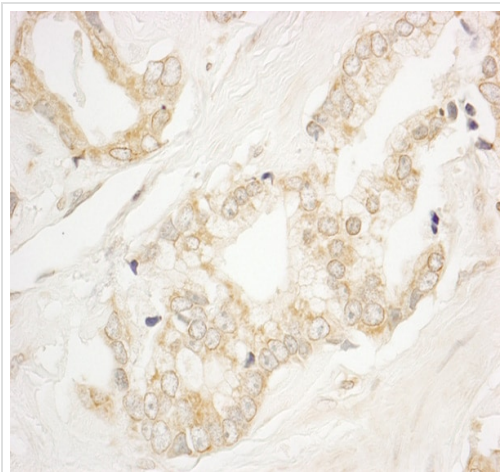
### Relevance

BIG1 is a brefeldin A-inhibited guanine nucleotide exchange protein (GEP) that activates ADP-ribosylation factor (ARF) GTPases and functions in vesicle formation from Golgi membranes.

### Cellular localization

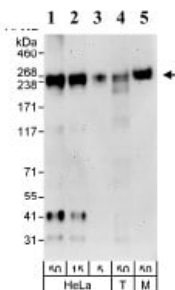
Cytoplasmic, Golgi Apparatus and Nuclear

## Images



Immunohistochemistry (Formalin/PFA-fixed paraffin-embedded sections) analysis of human prostate carcinoma tissue labelling BIG1 with ab72061 at 1/1000 (1µg/ml). Detection: DAB.

Immunohistochemistry (Formalin/PFA-fixed paraffin-embedded sections) - Anti-BIG1 antibody (ab72061)



Western blot - Anti-BIG1 antibody (ab72061)

**All lanes :** Anti-BIG1 antibody (ab72061) at 0.1 µg/ml

**Lane 1 :** Whole

cell lysate from HeLa cells at 50 µg

**Lane 2 :** Whole

cell lysate from HeLa cells at 15 µg

**Lane 3 :** Whole

cell lysate from HeLa cells at 5 µg

**Lane 4 :** Whole

cell lysate from 293T cells at 50 µg

**Lane 5 :** Whole

cell lysate from NIH 3T3 cells at 50 µg

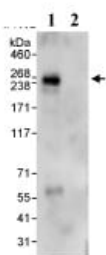
Developed using the ECL technique.

**Predicted band size:** 208 kDa

**Observed band size:** 250 kDa

**Additional bands at:** 31 kDa, 41 kDa. We are unsure as to the identity of these extra bands.

**Exposure time:** 3 minutes



Immunoprecipitation - Anti-BIG1 antibody (ab72061)

Detection of Human BIG1 by Immunoprecipitation in 1 mg whole cell lysate from HeLa cells, using ab72061 at 3 µg/mg lysate (lane 1) or a control rabbit IgG (lane 2). Subsequent Western blot detection was performed using ab72061 at 1 µg/ml on 20% of the immunoprecipitate.

**Please note:** All products are "FOR RESEARCH USE ONLY. NOT FOR USE IN DIAGNOSTIC PROCEDURES"

### **Our Abpromise to you: Quality guaranteed and expert technical support**

---

- Replacement or refund for products not performing as stated on the datasheet
- Valid for 12 months from date of delivery
- Response to your inquiry within 24 hours
  
- We provide support in Chinese, English, French, German, Japanese and Spanish
- Extensive multi-media technical resources to help you
- We investigate all quality concerns to ensure our products perform to the highest standards

If the product does not perform as described on this datasheet, we will offer a refund or replacement. For full details of the Abpromise, please visit <https://www.abcam.com/abpromise> or contact our technical team.

### **Terms and conditions**

---

- Guarantee only valid for products bought direct from Abcam or one of our authorized distributors