




Product datasheet

Biotin Anti-BDNF antibody ab245864

2 Images

Overview

Product name	Biotin Anti-BDNF antibody
Description	Biotin Rabbit polyclonal to BDNF
Host species	Rabbit
Conjugation	Biotin
Tested applications	Suitable for: WB, Sandwich ELISA
Species reactivity	Reacts with: Recombinant fragment Predicted to work with: Mouse, Rat, Horse, Cow, Cat, Dog, Human, Pig, Chimpanzee, Rhesus monkey 
Immunogen	Recombinant full length protein corresponding to Human BDNF aa 100 to the C-terminus. Full-length mature chainlacking the signal peptide and propeptide. Produced in E.coli. Database link: P23560  Run BLAST with  Run BLAST with
Positive control	WB: Recombinant human BDNF protein. sELISA: Recombinant human BDNF protein.
General notes	The Life Science industry has been in the grips of a reproducibility crisis for a number of years. Abcam is leading the way in addressing this with our range of recombinant monoclonal antibodies and knockout edited cell lines for gold-standard validation. Please check that this product meets your needs before purchasing. If you have any questions, special requirements or concerns, please send us an inquiry and/or contact our Support team ahead of purchase. Recommended alternatives for this product can be found below, along with publications, customer reviews and Q&As

Properties

Form	Lyophilized:Reconstitute in sterile PBS + 0.1% BSA to 0.1-1.0mg/ml.
Storage instructions	Shipped at 4°C. Store at +4°C short term (1-2 weeks). Upon delivery aliquot. Store at -20°C long term. Avoid freeze / thaw cycle. Store In the Dark.
Storage buffer	Constituent: PBS
Purity	Affinity purified
Clonality	Polyclonal
Isotype	IgG

Applications

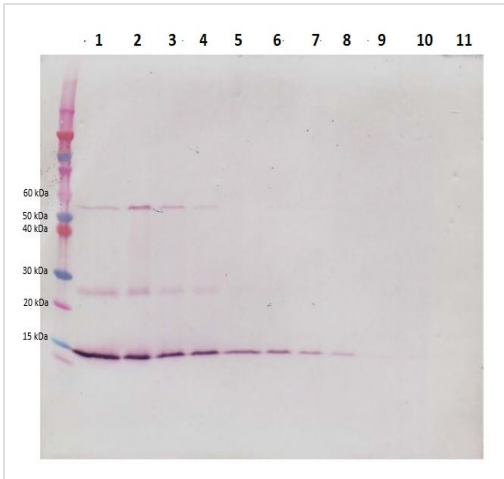
The Abpromise guarantee Our **Abpromise guarantee** covers the use of ab245864 in the following tested applications. The application notes include recommended starting dilutions; optimal dilutions/concentrations should be determined by the end user.

Application	Abreviews	Notes
WB		Use a concentration of 0.1 - 0.2 µg/ml. Predicted molecular weight: 27 kDa.
Sandwich ELISA		Use a concentration of 0.25 - 1 µg/ml.

Target

Function	During development, promotes the survival and differentiation of selected neuronal populations of the peripheral and central nervous systems. Participates in axonal growth, pathfinding and in the modulation of dendritic growth and morphology. Major regulator of synaptic transmission and plasticity at adult synapses in many regions of the CNS. The versatility of BDNF is emphasized by its contribution to a range of adaptive neuronal responses including long-term potentiation (LTP), long-term depression (LTD), certain forms of short-term synaptic plasticity, as well as homeostatic regulation of intrinsic neuronal excitability.
Tissue specificity	Brain. Highly expressed in hippocampus, amygdala, cerebral cortex and cerebellum. Also expressed in heart, lung, skeletal muscle, testis, prostate and placenta.
Involvement in disease	Bulimia nervosa 2 Congenital central hypoventilation syndrome
Sequence similarities	Belongs to the NGF-beta family.
Post-translational modifications	The propeptide is N-glycosylated and glycosulfated. Converted into mature BDNF by plasmin (PLG).
Cellular localization	Secreted.

Images



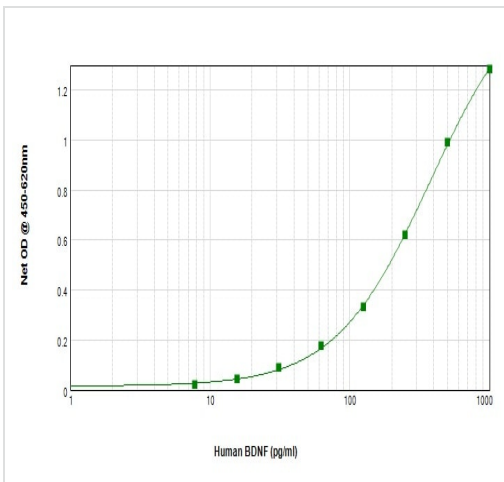
Western blot - Biotin Anti-BDNF antibody
(ab245864)

To detect human BDNF by Western Blot analysis ab245864 can be used at a concentration of 0.1 - 0.2 µg/ml.

Used in conjunction with compatible secondary reagents the detection limit for recombinant human BDNF is 1.5 - 3.0 ng/lane, under either reducing or non-reducing conditions.

Lanes 1-11: 250, 125, 62.5, 31.25, 15.625, 7.8, 3.9, 1.95, 0.975, 0.4875 and 0.24 ng recombinant human BDNF, respectively.

Non-reducing conditions.



Sandwich ELISA - Biotin Anti-BDNF antibody
(ab245864)

To detect humanBDNF by sandwich ELISA (using 100 µl/well antibody solution) a concentration of 0.25 – 1.0 µg/ml of ab245864 is required.

This biotinylated polyclonal antibody, in conjunction with a capture antibody, allows the detection of at least 0.2 – 0.4 ng/well of recombinant human BDNF.

Please note: All products are "FOR RESEARCH USE ONLY. NOT FOR USE IN DIAGNOSTIC PROCEDURES"

Our Abpromise to you: Quality guaranteed and expert technical support

- Replacement or refund for products not performing as stated on the datasheet
- Valid for 12 months from date of delivery
- Response to your inquiry within 24 hours
- We provide support in Chinese, English, French, German, Japanese and Spanish
- Extensive multi-media technical resources to help you
- We investigate all quality concerns to ensure our products perform to the highest standards

If the product does not perform as described on this datasheet, we will offer a refund or replacement. For full details of the Abpromise, please visit <https://www.abcam.com/abpromise> or contact our technical team.

Terms and conditions

- Guarantee only valid for products bought direct from Abcam or one of our authorized distributors