

Biotin Anti-CD90 / Thy1 antibody [5E10] ab134361

[1 References](#) [1 Image](#)

Overview

Product name	Biotin Anti-CD90 / Thy1 antibody [5E10]
Description	Biotin Mouse monoclonal [5E10] to CD90 / Thy1
Host species	Mouse
Conjugation	Biotin
Tested applications	Suitable for: Flow Cyt
Species reactivity	Reacts with: Human
Immunogen	Tissue, cells or virus corresponding to Human CD90/ Thy1. HEL Human erythroleukemia cell line
Positive control	Human erythroleukemia (HEL) cells
General notes	<p>The Life Science industry has been in the grips of a reproducibility crisis for a number of years. Abcam is leading the way in addressing this with our range of recombinant monoclonal antibodies and knockout edited cell lines for gold-standard validation. Please check that this product meets your needs before purchasing.</p> <p>If you have any questions, special requirements or concerns, please send us an inquiry and/or contact our Support team ahead of purchase. Recommended alternatives for this product can be found below, along with publications, customer reviews and Q&As</p>

Properties

Form	Liquid
Storage instructions	Shipped at 4°C. Store at +4°C short term (1-2 weeks). Store at +4°C. Do Not Freeze. Store In the Dark.
Storage buffer	<p>pH: 7.20</p> <p>Preservative: 0.09% Sodium azide</p> <p>Constituents: 0.1% Gelatin, 99% PBS</p>
Purity	Protein G purified
Clonality	Monoclonal
Clone number	5E10
Isotype	IgG1
Light chain type	kappa

Applications

The Abpromise guarantee

Our **Abpromise guarantee** covers the use of ab134361 in the following tested applications.

The application notes include recommended starting dilutions; optimal dilutions/concentrations should be determined by the end user.

Application	Abreviews	Notes
Flow Cyt		Use 1µg for 10 ⁵⁻⁸ cells. (In a final volume of 100 µl.) ab134361 Mouse monoclonal IgG1 is suitable for use as an

Target

Function

May play a role in cell-cell or cell-ligand interactions during synaptogenesis and other events in the brain.

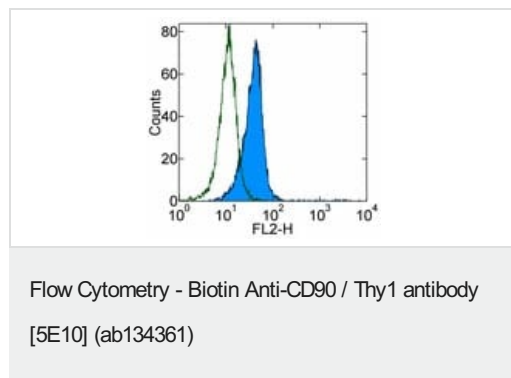
Sequence similarities

Contains 1 Ig-like V-type (immunoglobulin-like) domain.

Cellular localization

Cell membrane.

Images



Flow cytometry analysis of Human erythroleukemia (HEL) cells with 0.5 µg of Mouse IgG1 kappa Isotype Control Biotin (open histogram) or 0.5 µg ab134361 (filled histogram) followed by Streptavidin PE. Total viable cells were used for analysis.

Please note: All products are "FOR RESEARCH USE ONLY. NOT FOR USE IN DIAGNOSTIC PROCEDURES"

Our Abpromise to you: Quality guaranteed and expert technical support

- Replacement or refund for products not performing as stated on the datasheet
- Valid for 12 months from date of delivery
- Response to your inquiry within 24 hours
- We provide support in Chinese, English, French, German, Japanese and Spanish
- Extensive multi-media technical resources to help you
- We investigate all quality concerns to ensure our products perform to the highest standards

If the product does not perform as described on this datasheet, we will offer a refund or replacement. For full details of the Abpromise, please visit <https://www.abcam.com/abpromise> or contact our technical team.

Terms and conditions

- Guarantee only valid for products bought direct from Abcam or one of our authorized distributors