




Product datasheet

Biotin Anti-CLIP170 antibody ab240434

1 Image

Overview

Product name	Biotin Anti-CLIP170 antibody
Description	Biotin Goat polyclonal to CLIP170
Host species	Goat
Conjugation	Biotin
Specificity	This antibody is expected to recognize both reported isoforms (NP_002947.1; NP_937883.1).
Tested applications	Suitable for: WB
Species reactivity	Reacts with: Human Predicted to work with: Mouse, Rat 
Immunogen	Synthetic peptide corresponding to Human CLIP170 aa 1400 to the C-terminus (Cysteine residue). Database link: P30622  Run BLAST with  Run BLAST with
Positive control	WB: Human breast cancer tissue.
General notes	<p>The Life Science industry has been in the grips of a reproducibility crisis for a number of years. Abcam is leading the way in addressing this with our range of recombinant monoclonal antibodies and knockout edited cell lines for gold-standard validation. Please check that this product meets your needs before purchasing.</p> <p>If you have any questions, special requirements or concerns, please send us an inquiry and/or contact our Support team ahead of purchase. Recommended alternatives for this product can be found below, along with publications, customer reviews and Q&As</p>

Properties

Form	Liquid
Storage instructions	Shipped at 4°C. Store at +4°C short term (1-2 weeks). Upon delivery aliquot. Store at -20°C long term. Avoid freeze / thaw cycle. Store In the Dark.
Storage buffer	pH: 7.30 Preservative: 0.02% Sodium azide Constituents: Tris buffered saline, 0.5% BSA
Purity	Immunogen affinity purified
Purification notes	Purified from goat serum by ammonium sulphate precipitation followed by antigen affinity

	chromatography using the immunizing peptide.
Clonality	Polyclonal
Isotype	IgG

Applications

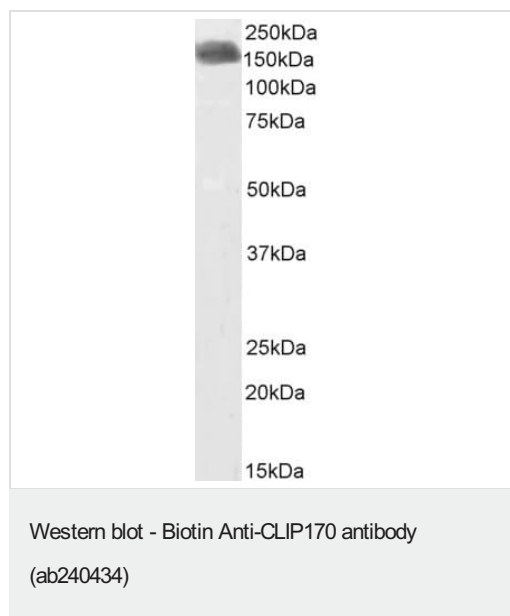
The Abpromise guarantee Our **Abpromise guarantee** covers the use of ab240434 in the following tested applications. The application notes include recommended starting dilutions; optimal dilutions/concentrations should be determined by the end user.

Application	Abreviews	Notes
WB		Use a concentration of 1 - 3 µg/ml. Predicted molecular weight: 162 kDa. 1 hour primary incubation is recommended for this product.

Target

Function	Seems to be a intermediate filament associated protein that links endocytic vesicles to microtubules.
Tissue specificity	Highly expressed in the Reed-Sternberg cells of Hodgkin disease.
Sequence similarities	Contains 2 CAP-Gly domains.
Cellular localization	Cytoplasm. Cytoplasm > cytoskeleton. Associated with the cytoskeleton. Localizes to the tips of microtubules.

Images



Biotin Anti-CLIP170 antibody (ab240434) at 1 µg/ml + Human breast cancer tissue in RIPA buffer at 35 µg

Secondary

Streptavidin-HRP

Predicted band size: 162 kDa

Primary incubation for 1 hour.

Detected by chemiluminescence, using streptavidin-HRP and using NAP blocker as a substitute for skimmed milk.

Please note: All products are "FOR RESEARCH USE ONLY. NOT FOR USE IN DIAGNOSTIC PROCEDURES"

Our Abpromise to you: Quality guaranteed and expert technical support

- Replacement or refund for products not performing as stated on the datasheet
- Valid for 12 months from date of delivery
- Response to your inquiry within 24 hours

- We provide support in Chinese, English, French, German, Japanese and Spanish
- Extensive multi-media technical resources to help you
- We investigate all quality concerns to ensure our products perform to the highest standards

If the product does not perform as described on this datasheet, we will offer a refund or replacement. For full details of the Abpromise, please visit <https://www.abcam.com/abpromise> or contact our technical team.

Terms and conditions

- Guarantee only valid for products bought direct from Abcam or one of our authorized distributors