




## Product datasheet

### Biotin Anti-CXCL1/GRO alpha antibody ab271204

[1 References](#) [2 Images](#)

#### Overview

<b>Product name</b>	Biotin Anti-CXCL1/GRO alpha antibody
<b>Description</b>	Biotin Rabbit polyclonal to CXCL1/GRO alpha
<b>Host species</b>	Rabbit
<b>Conjugation</b>	Biotin
<b>Tested applications</b>	<b>Suitable for:</b> WB, Sandwich ELISA
<b>Species reactivity</b>	<b>Reacts with:</b> Recombinant fragment <b>Predicted to work with:</b> Rat 
<b>Immunogen</b>	Recombinant fragment corresponding to Mouse CXCL1/GRO alpha aa 1-100. Database link: <a href="#">P12850</a>  <a href="#">Run BLAST with</a>  <a href="#">Run BLAST with</a>
<b>Positive control</b>	WB: Recombinant mouse CXCL1/GRO alpha protein.
<b>General notes</b>	<p>The Life Science industry has been in the grips of a reproducibility crisis for a number of years. Abcam is leading the way in addressing this with our range of recombinant monoclonal antibodies and knockout edited cell lines for gold-standard validation. Please check that this product meets your needs before purchasing.</p> <p>If you have any questions, special requirements or concerns, please send us an inquiry and/or contact our Support team ahead of purchase. Recommended alternatives for this product can be found below, along with publications, customer reviews and Q&amp;As</p>

#### Properties

<b>Form</b>	Lyophilized:Reconstitute in sterile PBS with 0.1% BSA to 0.1 - 1.0 mg/ml.
<b>Storage instructions</b>	Shipped at 4°C. Store at +4°C short term (1-2 weeks). Upon delivery aliquot. Store at -20°C long term. Avoid freeze / thaw cycle. Store In the Dark.
<b>Storage buffer</b>	Constituents: PBS, 0.1% BSA
<b>Purity</b>	Affinity purified
<b>Clonality</b>	Polyclonal
<b>Isotype</b>	IgG

#### Applications

## Applications

### The Abpromise guarantee

Our **Abpromise guarantee** covers the use of ab271204 in the following tested applications.

The application notes include recommended starting dilutions; optimal dilutions/concentrations should be determined by the end user.

Application	Abreviews	Notes
<b>WB</b>		Use a concentration of 0.1 - 0.2 µg/ml. Predicted molecular weight: 11 kDa.
<b>Sandwich ELISA</b>		Use a concentration of 0.25 - 1 µg/ml. Mouse CXCL1/GRO alpha was detected by sandwich ELISA (using 100µl/well) using a concentration of 0.25-1.0 µg/ml of ab271204. This antibody in conjunction with an appropriate capture antibody, allows the detection of at least 0.2-0.4 ng/well of recombinant mouse CXCL1/GRO alpha protein.

## Target

### Function

Has chemotactic activity for neutrophils. May play a role in inflammation and exerts its effects on endothelial cells in an autocrine fashion. In vitro, the processed forms GRO-alpha(4-73), GRO-alpha(5-73) and GRO-alpha(6-73) show a 30-fold higher chemotactic activity.

### Sequence similarities

Belongs to the intercrine alpha (chemokine CxC) family.

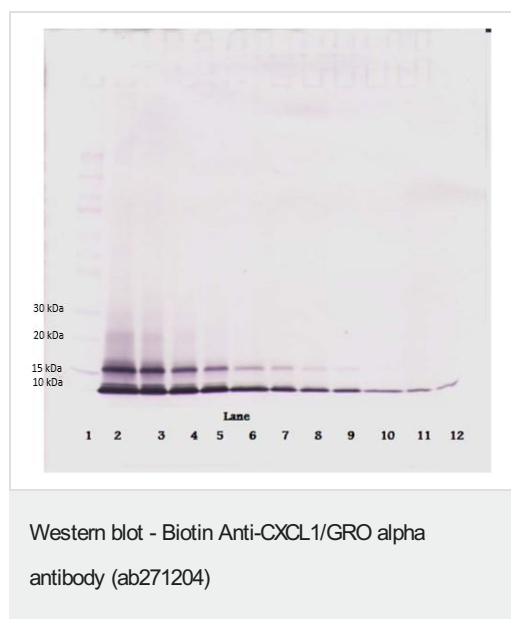
### Post-translational modifications

N-terminal processed forms GRO-alpha(4-73), GRO-alpha(5-73) and GRO-alpha(6-73) are produced by proteolytic cleavage after secretion from peripheral blood monocytes.

### Cellular localization

Secreted.

## Images



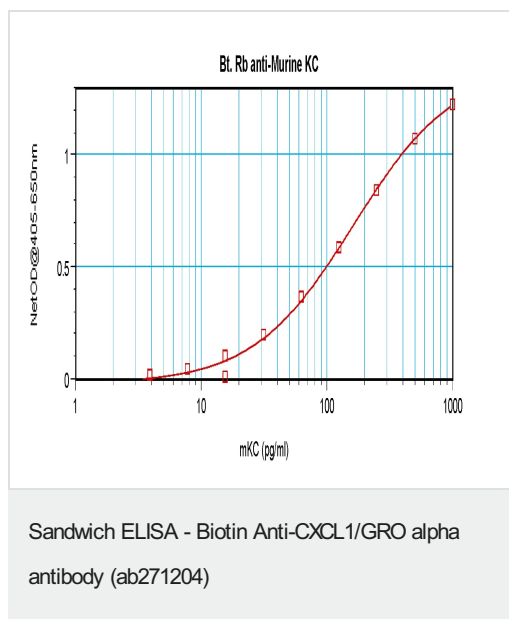
To detect mouse CXCL1/GRO alpha by Western Blot analysis this antibody can be used at a concentration of 0.1 - 0.2 µg/ml.

Used in conjunction with compatible secondary reagents the detection limit for recombinant mouse CXCL1/GRO alpha is 1.5 - 3.0 ng/lane, under either reducing or non-reducing conditions.

### Lane 1: Marker

**Lanes 2-12:** 250, 125, 62.5, 31.25, 15.625, 7.8, 3.9, 1.95, 0.975, 0.4875 and 0.24 ng recombinant mouse CXCL1/GRO alpha, respectively.

Non-reducing conditions.



Mouse CXCL1/GRO alpha was detected by sandwich ELISA (using 100 µl/well) using a concentration of 0.25-1.0 µg/ml of ab271204.

This antibody in conjunction with an appropriate capture antibody, allows the detection of at least 0.2-0.4 ng/well of recombinant mouse CXCL1/GRO alpha protein.

KC = CXCL1/GRO alpha

**Please note:** All products are "FOR RESEARCH USE ONLY. NOT FOR USE IN DIAGNOSTIC PROCEDURES"

### Our Abpromise to you: Quality guaranteed and expert technical support

- Replacement or refund for products not performing as stated on the datasheet
- Valid for 12 months from date of delivery
- Response to your inquiry within 24 hours
- We provide support in Chinese, English, French, German, Japanese and Spanish
- Extensive multi-media technical resources to help you
- We investigate all quality concerns to ensure our products perform to the highest standards

If the product does not perform as described on this datasheet, we will offer a refund or replacement. For full details of the Abpromise, please visit <https://www.abcam.com/abpromise> or contact our technical team.

### Terms and conditions

- Guarantee only valid for products bought direct from Abcam or one of our authorized distributors