

Biotin Anti-Endostatin/COL18A1 antibody ab84250

[1 Image](#)

Overview

| | |
|----------------------------|---|
| Product name | Biotin Anti-Endostatin/COL18A1 antibody |
| Description | Biotin Rabbit polyclonal to Endostatin/COL18A1 |
| Host species | Rabbit |
| Conjugation | Biotin |
| Tested applications | Suitable for: WB |
| Species reactivity | Reacts with: Human |
| Immunogen | Recombinant full length protein corresponding to Human Endostatin/COL18A1. |
| General notes | <p>The Life Science industry has been in the grips of a reproducibility crisis for a number of years. Abcam is leading the way in addressing this with our range of recombinant monoclonal antibodies and knockout edited cell lines for gold-standard validation. Please check that this product meets your needs before purchasing.</p> <p>If you have any questions, special requirements or concerns, please send us an inquiry and/or contact our Support team ahead of purchase. Recommended alternatives for this product can be found below, along with publications, customer reviews and Q&As</p> |

Properties

| | |
|-----------------------------|--|
| Form | Lyophilized:Centrifuge vial prior to opening. Reconstitute in sterile PBS containing 0.1% BSA to a concentration of 0.1-1.0 mg/ml. |
| Storage instructions | Shipped at 4°C. Store at +4°C short term (1-2 weeks). Store at -20°C or -80°C. Avoid freeze / thaw cycle. |
| Storage buffer | Constituent: PBS |
| Clonality | Polyclonal |
| Isotype | IgG |

Applications

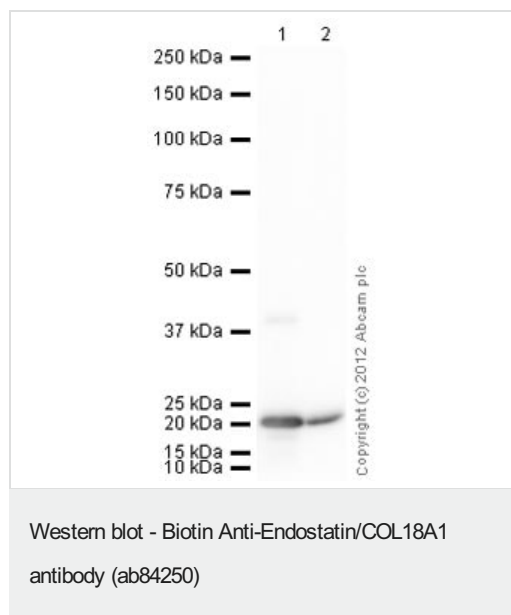
The Abpromise guarantee Our **Abpromise guarantee** covers the use of ab84250 in the following tested applications. The application notes include recommended starting dilutions; optimal dilutions/concentrations should be determined by the end user.

| Application | Abreviews | Notes |
|-------------|-----------|---|
| WB | | Use a concentration of 0.1 - 0.2 µg/ml. Predicted molecular weight: 22 kDa. |

Target

| | |
|---|---|
| Function | COLA18A probably plays a major role in determining the retinal structure as well as in the closure of the neural tube. Endostatin potently inhibits endothelial cell proliferation and angiogenesis. May inhibit angiogenesis by binding to the heparan sulfate proteoglycans involved in growth factor signaling. |
| Tissue specificity | Present in multiple organs with highest levels in liver, lung and kidney. |
| Involvement in disease | Defects in COL18A1 are a cause of Knobloch syndrome (KNO) [MIM:267750]. KNO is an autosomal recessive disorder defined by the occurrence of high myopia, vitreoretinal degeneration with retinal detachment, macular abnormalities and occipital encephalocele. |
| Sequence similarities | Belongs to the multiplexin collagen family. Contains 1 FZ (frizzled) domain. Contains 1 TSP N-terminal (TSPN) domain. |
| Post-translational modifications | Prolines at the third position of the tripeptide repeating unit (G-X-Y) are hydroxylated in some or all of the chains. |
| Cellular localization | Secreted > extracellular space > extracellular matrix. |

Images



Please note: All products are "FOR RESEARCH USE ONLY. NOT FOR USE IN DIAGNOSTIC PROCEDURES"

Our Abpromise to you: Quality guaranteed and expert technical support

- Replacement or refund for products not performing as stated on the datasheet
- Valid for 12 months from date of delivery
- Response to your inquiry within 24 hours
- We provide support in Chinese, English, French, German, Japanese and Spanish
- Extensive multi-media technical resources to help you
- We investigate all quality concerns to ensure our products perform to the highest standards

If the product does not perform as described on this datasheet, we will offer a refund or replacement. For full details of the Abpromise, please visit <https://www.abcam.com/abpromise> or contact our technical team.

Terms and conditions

- Guarantee only valid for products bought direct from Abcam or one of our authorized distributors