

Product datasheet

Biotin Anti-F4/80 antibody [BM8] ab15694

★★★★★ [1 Abreviews](#) [7 References](#) [1 Image](#)

Overview

Product name	Biotin Anti-F4/80 antibody [BM8]
Description	Biotin Rat monoclonal [BM8] to F4/80
Host species	Rat
Conjugation	Biotin
Tested applications	Suitable for: Flow Cyt
Species reactivity	Reacts with: Mouse
Immunogen	Tissue, cells or virus. This information is proprietary to Abcam and/or its suppliers.
Epitope	F4/80 antigen.
General notes	<p>The antigen is a 125kD cell surface membrane bound protein (non-reducing conditions). It is sensitive to 2 mercaptoethanol.</p> <p>The Life Science industry has been in the grips of a reproducibility crisis for a number of years. Abcam is leading the way in addressing this with our range of recombinant monoclonal antibodies and knockout edited cell lines for gold-standard validation. Please check that this product meets your needs before purchasing.</p> <p>If you have any questions, special requirements or concerns, please send us an inquiry and/or contact our Support team ahead of purchase. Recommended alternatives for this product can be found below, along with publications, customer reviews and Q&As</p>

Properties

Form	Liquid
Storage instructions	Shipped at 4°C. Store at +4°C. Do Not Freeze. Store undiluted.
Storage buffer	<p>pH: 7.20</p> <p>Preservative: 0.09% Sodium azide</p> <p>Constituents: 0.14% Monobasic dihydrogen sodium phosphate, 0.87% Sodium chloride</p>
Purity	Affinity purified
Clonality	Monoclonal
Clone number	BM8
Isotype	IgG2a

Applications

The Abpromise guarantee

Our **Abpromise guarantee** covers the use of ab15694 in the following tested applications.

The application notes include recommended starting dilutions; optimal dilutions/concentrations should be determined by the end user.

Application	Abreviews	Notes
Flow Cyt		Use at an assay dependent concentration.

Target

Function

Orphan receptor involved in cell adhesion and probably in cell-cell interactions specifically involving cells of the immune system. May play a role in regulatory T-cells (Treg) development.

Tissue specificity

Expression is restricted to eosinophils.

Sequence similarities

Belongs to the G-protein coupled receptor 2 family. Adhesion G-protein coupled receptor (ADGR) subfamily.

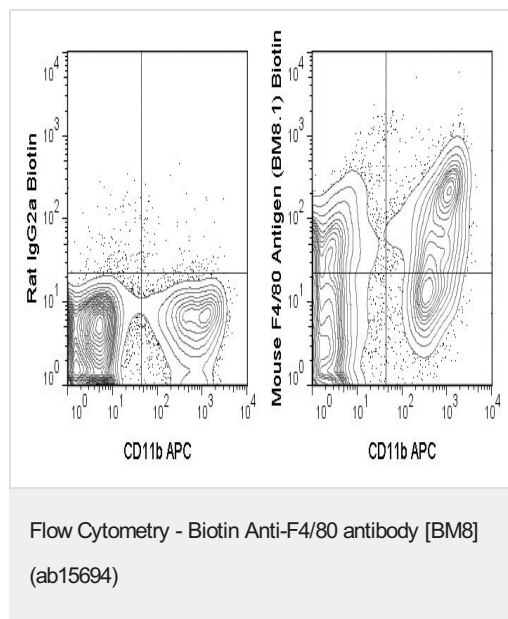
Contains 6 EGF-like domains.

Contains 1 GPS domain.

Cellular localization

Cell membrane.

Images



Flow Cytometry analysis of C57Bl/6 Mouse bone marrow cells labeling APC Anti-Mouse CD11b and 0.125 μ g Biotin Anti-F4/80 antibody (ab15694) (right panel) or 0.125 μ g Biotin Rat IgG2b isotype control (left panel), followed by Streptavidin PE.

Please note: All products are "FOR RESEARCH USE ONLY. NOT FOR USE IN DIAGNOSTIC PROCEDURES"

Our Abpromise to you: Quality guaranteed and expert technical support

- Replacement or refund for products not performing as stated on the datasheet
- Valid for 12 months from date of delivery
- Response to your inquiry within 24 hours

- We provide support in Chinese, English, French, German, Japanese and Spanish
- Extensive multi-media technical resources to help you
- We investigate all quality concerns to ensure our products perform to the highest standards

If the product does not perform as described on this datasheet, we will offer a refund or replacement. For full details of the Abpromise, please visit <https://www.abcam.com/abpromise> or contact our technical team.

Terms and conditions

- Guarantee only valid for products bought direct from Abcam or one of our authorized distributors