

Product datasheet

Biotin Anti-Fas antibody ab271240

[2 Images](#)

Overview

Product name	Biotin Anti-Fas antibody
Description	Biotin Rabbit polyclonal to Fas
Host species	Rabbit
Conjugation	Biotin
Tested applications	Suitable for: WB, Sandwich ELISA
Species reactivity	Reacts with: Recombinant fragment
Immunogen	Recombinant fragment corresponding to Human Fas aa 1-200. Database link: P25445

 [Run BLAST with](#)

 [Run BLAST with](#)

General notes

The Life Science industry has been in the grips of a reproducibility crisis for a number of years. Abcam is leading the way in addressing this with our range of recombinant monoclonal antibodies and knockout edited cell lines for gold-standard validation. Please check that this product meets your needs before purchasing.

If you have any questions, special requirements or concerns, please send us an inquiry and/or contact our Support team ahead of purchase. Recommended alternatives for this product can be found below, along with publications, customer reviews and Q&As

Properties

Form	Lyophilized:Reconstitute in sterile PBS with 0.1% BSA to 0.1 - 1.0 mg/ml.
Storage instructions	Shipped at 4°C. Store at +4°C short term (1-2 weeks). Upon delivery aliquot. Store at -20°C long term. Avoid freeze / thaw cycle. Store In the Dark.
Storage buffer	Constituents: PBS, 0.1% BSA
Purity	Affinity purified
Clonality	Polyclonal
Isotype	IgG

Applications

The Abpromise guarantee Our [Abpromise guarantee](#) covers the use of ab271240 in the following tested applications.

The application notes include recommended starting dilutions; optimal dilutions/concentrations should be determined by the end user.

Application	Abreviews	Notes
WB		Use a concentration of 0.1 - 0.2 µg/ml. Predicted molecular weight: 37 kDa.
Sandwich ELISA		Use at an assay dependent concentration.

Target

Function

Receptor for TNFSF6/FASLG. The adapter molecule FADD recruits caspase-8 to the activated receptor. The resulting death-inducing signaling complex (DISC) performs caspase-8 proteolytic activation which initiates the subsequent cascade of caspases (aspartate-specific cysteine proteases) mediating apoptosis. FAS-mediated apoptosis may have a role in the induction of peripheral tolerance, in the antigen-stimulated suicide of mature T-cells, or both. The secreted isoforms 2 to 6 block apoptosis (in vitro).

Tissue specificity

Isoform 1 and isoform 6 are expressed at equal levels in resting peripheral blood mononuclear cells. After activation there is an increase in isoform 1 and decrease in the levels of isoform 6.

Involvement in disease

Defects in FAS are the cause of autoimmune lymphoproliferative syndrome type 1A (ALPS1A) [MIM:601859]; also known as Canale-Smith syndrome (CSS). ALPS is a childhood syndrome involving hemolytic anemia and thrombocytopenia with massive lymphadenopathy and splenomegaly.

Sequence similarities

Contains 1 death domain.
Contains 3 TNFR-Cys repeats.

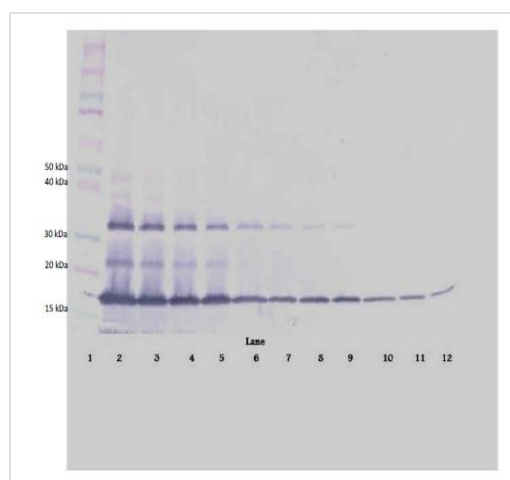
Domain

Contains a death domain involved in the binding of FADD, and maybe to other cytosolic adapter proteins.

Cellular localization

Secreted and Cell membrane.

Images



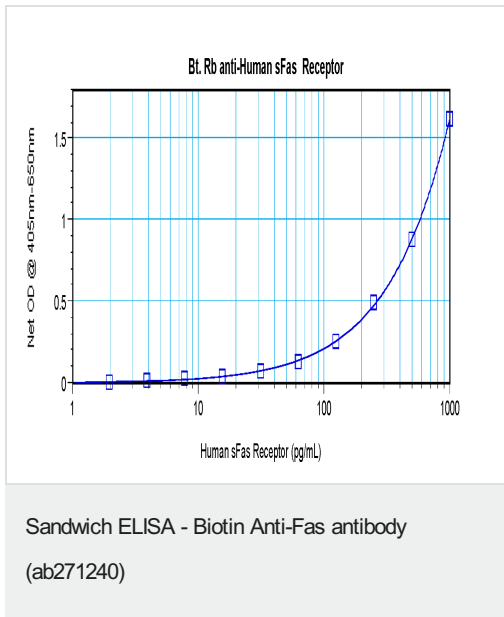
Western blot - Biotin Anti-Fas antibody (ab271240)

Western blot analysis of varying levels of Recombinant human Fas protein using ab271240 at 0.2 µg/ml.

Used in conjunction with compatible secondary reagents the detection limit for recombinant Fas is 1.5 - 3.0 ng/lane, under either reducing or non-reducing conditions.

Lane	ng/lane
1	Marker
2	250
3	125
4	62.5
5	31.25
6	15.625
7	7.8

8	3.9
9	1.95
10	0.975
11	0.4875
12	0.24



Human sFas Receptor was detected by sandwich ELISA (using 100µl/well) using a concentration of 0.25-1.0 µg/ml of ab271240. This antibody in conjunction with an appropriate capture antibody, allows the detection of at least 0.2 – 0.4 ng/well of recombinant Human sFas Receptor protein.

Please note: All products are "FOR RESEARCH USE ONLY. NOT FOR USE IN DIAGNOSTIC PROCEDURES"

Our Abpromise to you: Quality guaranteed and expert technical support

- Replacement or refund for products not performing as stated on the datasheet
- Valid for 12 months from date of delivery
- Response to your inquiry within 24 hours
- We provide support in Chinese, English, French, German, Japanese and Spanish
- Extensive multi-media technical resources to help you
- We investigate all quality concerns to ensure our products perform to the highest standards

If the product does not perform as described on this datasheet, we will offer a refund or replacement. For full details of the Abpromise, please visit <https://www.abcam.com/abpromise> or contact our technical team.

Terms and conditions

- Guarantee only valid for products bought direct from Abcam or one of our authorized distributors