

Product datasheet

Biotin Anti-Fc epsilon RI/FCER1A antibody [CRA1] ab122882

[4 References](#) [1 Image](#)

Overview

Product name	Biotin Anti-Fc epsilon RI/FCER1A antibody [CRA1]
Description	Biotin Mouse monoclonal [CRA1] to Fc epsilon RI/FCER1A
Host species	Mouse
Conjugation	Biotin
Tested applications	Suitable for: Flow Cyt
Species reactivity	Reacts with: Human
Immunogen	Recombinant fragment corresponding to Human Fc epsilon RI/FCER1A aa 1-100. Run BLAST with ExpASY Run BLAST with NCBI
Epitope	corresponds to Amino acids 1-84 of Human Fc epsilon RI/FCER1A
Positive control	CHO/alpha beta gamma cells
General notes	[biotin]/[IgG] = 8.9 <p>The Life Science industry has been in the grips of a reproducibility crisis for a number of years. Abcam is leading the way in addressing this with our range of recombinant monoclonal antibodies and knockout edited cell lines for gold-standard validation. Please check that this product meets your needs before purchasing.</p> <p>If you have any questions, special requirements or concerns, please send us an inquiry and/or contact our Support team ahead of purchase. Recommended alternatives for this product can be found below, along with publications, customer reviews and Q&As</p>

Properties

Form	Liquid
Storage instructions	Shipped at 4°C. Store at +4°C short term (1-2 weeks). Store at -20°C or -80°C. Avoid freeze / thaw cycle.
Storage buffer	pH: 6 Constituents: 49% PBS, 50% Glycerol (glycerin, glycerine)
Purity	Ion Exchange Chromatography
Purification notes	The IgG fraction was purified from serum free culture medium of mouse hybridoma (CRA1) by propriety chromatography under mild conditions. Filter sterilized.

Clonality	Monoclonal
Clone number	CRA1
Isotype	IgG2b
Light chain type	kappa

Applications

The Abpromise guarantee Our **Abpromise guarantee** covers the use of ab122882 in the following tested applications. The application notes include recommended starting dilutions; optimal dilutions/concentrations should be determined by the end user.

Application	Abreviews	Notes
Flow Cyt		Use at an assay dependent concentration. ab18418 - Mouse monoclonal IgG2b, is suitable for use as an isotype control with this antibody.

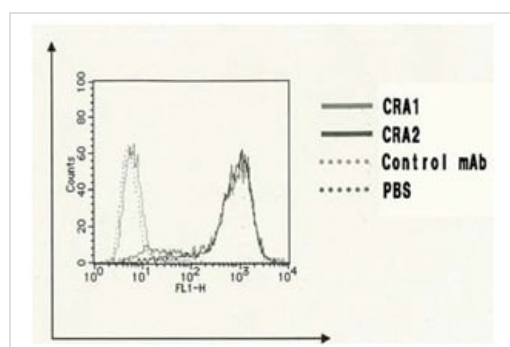
Target

Function Binds to the Fc region of immunoglobulins epsilon. High affinity receptor. Responsible for initiating the allergic response. Binding of allergen to receptor-bound IgE leads to cell activation and the release of mediators (such as histamine) responsible for the manifestations of allergy. The same receptor also induces the secretion of important lymphokines.

Sequence similarities Contains 2 Ig-like (immunoglobulin-like) domains.

Cellular localization Cell membrane.

Images



Flow Cytometry - Biotin Anti-Fc epsilon RI/FCER1A antibody [CRA1] (ab122882)

FACS analysis of CHO/alpha beta gamma cells (1×10^5) with CRA1 and CRA2 antibodies by indirect-immunostaining, using FITC-labeled secondary antibody.

Please note: All products are "FOR RESEARCH USE ONLY. NOT FOR USE IN DIAGNOSTIC PROCEDURES"

Our Abpromise to you: Quality guaranteed and expert technical support

- Replacement or refund for products not performing as stated on the datasheet
- Valid for 12 months from date of delivery
- Response to your inquiry within 24 hours

- We provide support in Chinese, English, French, German, Japanese and Spanish
- Extensive multi-media technical resources to help you
- We investigate all quality concerns to ensure our products perform to the highest standards

If the product does not perform as described on this datasheet, we will offer a refund or replacement. For full details of the Abpromise, please visit <https://www.abcam.com/abpromise> or contact our technical team.

Terms and conditions

- Guarantee only valid for products bought direct from Abcam or one of our authorized distributors