

Product datasheet

Biotin Anti-G-CSF antibody ab271256

[2 Images](#)

Overview

Product name	Biotin Anti-G-CSF antibody
Description	Biotin Rabbit polyclonal to G-CSF
Host species	Rabbit
Conjugation	Biotin
Tested applications	Suitable for: WB, Sandwich ELISA
Species reactivity	Reacts with: Recombinant fragment
Immunogen	Recombinant fragment corresponding to Human G-CSF aa 1 to the C-terminus. Database link: P09919

 [Run BLAST with](#)

 [Run BLAST with](#)

General notes

The Life Science industry has been in the grips of a reproducibility crisis for a number of years. Abcam is leading the way in addressing this with our range of recombinant monoclonal antibodies and knockout edited cell lines for gold-standard validation. Please check that this product meets your needs before purchasing.

If you have any questions, special requirements or concerns, please send us an inquiry and/or contact our Support team ahead of purchase. Recommended alternatives for this product can be found below, along with publications, customer reviews and Q&As

Properties

Form	Lyophilized:Reconstitute in sterile PBS with 0.1% BSA to 0.1 - 1.0 mg/ml.
Storage instructions	Shipped at 4°C. Store at +4°C short term (1-2 weeks). Upon delivery aliquot. Store at -20°C long term. Avoid freeze / thaw cycle. Store In the Dark.
Storage buffer	Constituents: PBS, 0.1% BSA
Purity	Affinity purified
Clonality	Polyclonal
Isotype	IgG

Applications

The Abpromise guarantee Our [Abpromise guarantee](#) covers the use of ab271256 in the following tested applications.

The application notes include recommended starting dilutions; optimal dilutions/concentrations should be determined by the end user.

Application	Abreviews	Notes
WB		Use a concentration of 0.1 - 0.2 µg/ml. Predicted molecular weight: 22 kDa.
Sandwich ELISA		Use at an assay dependent concentration.

Target

Function

Granulocyte/macrophage colony-stimulating factors are cytokines that act in hematopoiesis by controlling the production, differentiation, and function of 2 related white cell populations of the blood, the granulocytes and the monocytes-macrophages. This CSF induces granulocytes.

Sequence similarities

Belongs to the IL-6 superfamily.

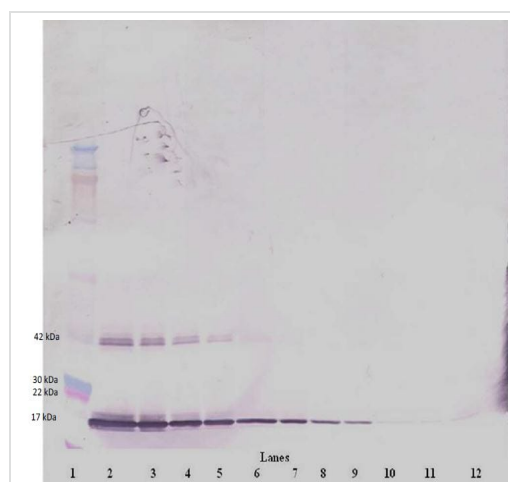
Post-translational modifications

O-glycan consists of Gal-GalNAc disaccharide which can be modified with up to two sialic acid residues (done in recombinantly expressed G-CSF from CHO cells).

Cellular localization

Secreted.

Images

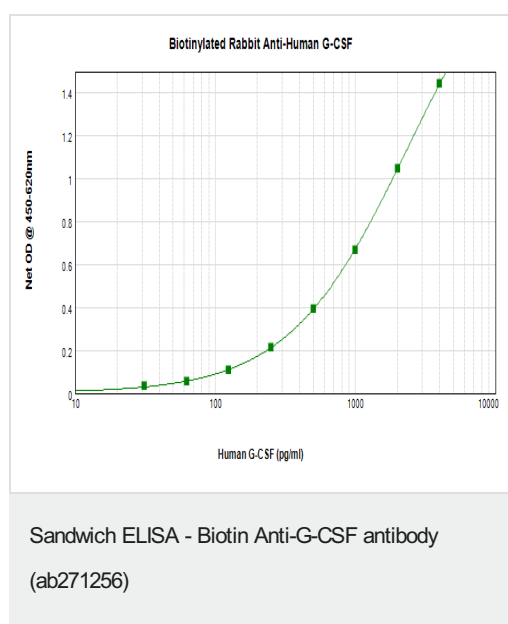


Western blot - Biotin Anti-G-CSF antibody
(ab271256)

Western blot analysis of varying levels of Recombinant human G-CSF protein using ab271256 at 0.1 µg/ml.

Used in conjunction with compatible secondary reagents the detection limit for recombinant G-CSF is 1.5 - 3.0 ng/lane, under either reducing or non-reducing conditions.

Lane	ng/lane
1	Marker
2	250
3	125
4	62.5
5	31.25
6	15.625
7	7.8
8	3.9
9	1.95
10	0.975
11	0.4875
12	0.24



Human hG-CSF was detected by sandwich ELISA (using 100µl/well) using a concentration of 0.25-1.0 µg/ml of ab271256. This antibody in conjunction with an appropriate capture antibody, allows the detection of at least 0.2-0.4 ng/well of recombinant hG-CSF protein.

Please note: All products are "FOR RESEARCH USE ONLY. NOT FOR USE IN DIAGNOSTIC PROCEDURES"

Our Abpromise to you: Quality guaranteed and expert technical support

- Replacement or refund for products not performing as stated on the datasheet
- Valid for 12 months from date of delivery
- Response to your inquiry within 24 hours
- We provide support in Chinese, English, French, German, Japanese and Spanish
- Extensive multi-media technical resources to help you
- We investigate all quality concerns to ensure our products perform to the highest standards

If the product does not perform as described on this datasheet, we will offer a refund or replacement. For full details of the Abpromise, please visit <https://www.abcam.com/abpromise> or contact our technical team.

Terms and conditions

- Guarantee only valid for products bought direct from Abcam or one of our authorized distributors