

Product datasheet

Biotin Anti-Galectin 3 antibody [M3/38] ab95679

[2 Images](#)

Overview

Product name	Biotin Anti-Galectin 3 antibody [M3/38]
Description	Biotin Rat monoclonal [M3/38] to Galectin 3
Host species	Rat
Conjugation	Biotin
Tested applications	Suitable for: Flow Cyt
Species reactivity	Reacts with: Mouse, Human
Immunogen	Galectin 3 of mouse origin
Positive control	Normal human peripheral blood cells, C57BL/6 Mouse bone marrow cells.
General notes	<p>The Life Science industry has been in the grips of a reproducibility crisis for a number of years. Abcam is leading the way in addressing this with our range of recombinant monoclonal antibodies and knockout edited cell lines for gold-standard validation. Please check that this product meets your needs before purchasing.</p> <p>If you have any questions, special requirements or concerns, please send us an inquiry and/or contact our Support team ahead of purchase. Recommended alternatives for this product can be found below, along with publications, customer reviews and Q&As</p>

Properties

Form	Liquid
Storage instructions	Shipped at 4°C. Store at +4°C short term (1-2 weeks). Store at -20°C or -80°C. Avoid freeze / thaw cycle.
Storage buffer	pH: 7.20 Preservative: 0.09% Sodium azide Constituent: PBS
Purity	Protein G purified
Clonality	Monoclonal
Clone number	M3/38
Isotype	IgG2a
Light chain type	kappa

Applications

The Abpromise guarantee

Our **Abpromise guarantee** covers the use of ab95679 in the following tested applications.

The application notes include recommended starting dilutions; optimal dilutions/concentrations should be determined by the end user.

Application	Abreviews	Notes
Flow Cyt		Use 0.25µg for 10 ⁵ cells. ab95679 can be used at 0.25 µg/per test. A test is defined as the amount (µg)/test of antibody that will stain a cell sample in a final volume of 100 µL. Cell number should be determined empirically but can range from 10 ⁵ to 10 ⁸ cells/test.

Target

Function

Galactose-specific lectin which binds IgE. May mediate with the alpha-3, beta-1 integrin the stimulation by CSPG4 of endothelial cells migration. Together with DMBT1, required for terminal differentiation of columnar epithelial cells during early embryogenesis.

Tissue specificity

A major expression is found in the colonic epithelium. It is also abundant in the activated macrophages.

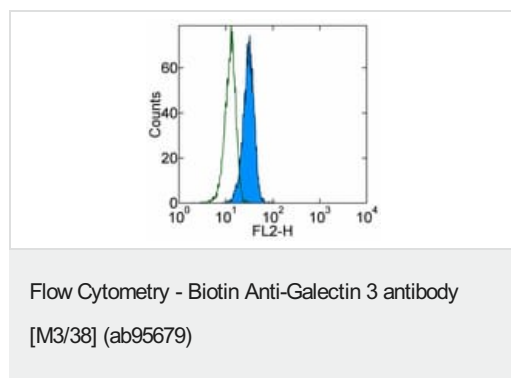
Sequence similarities

Contains 1 galectin domain.

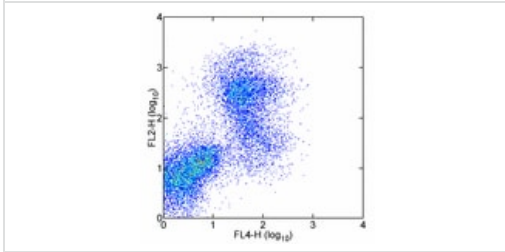
Cellular localization

Nucleus. Cytoplasmic in adenomas and carcinomas. May be secreted by a non-classical secretory pathway and associate with the cell surface.

Images



ab95679 at 0.125µg dilution staining Galectin 3 in C57BL/6 mouse bone marrow cells by Flow Cytometry (shown in blue) followed by Streptavidin PE.



Flow Cytometry - Biotin Anti-Galectin 3 antibody
[M3/38] (ab95679)

ab95679 at 0.125 μ g dilution staining the monocyte population in normal human peripheral blood cells by Flow Cytometry followed by Streptavidin PE.

Please note: All products are "FOR RESEARCH USE ONLY. NOT FOR USE IN DIAGNOSTIC PROCEDURES"

Our Abpromise to you: Quality guaranteed and expert technical support

- Replacement or refund for products not performing as stated on the datasheet
- Valid for 12 months from date of delivery
- Response to your inquiry within 24 hours
- We provide support in Chinese, English, French, German, Japanese and Spanish
- Extensive multi-media technical resources to help you
- We investigate all quality concerns to ensure our products perform to the highest standards

If the product does not perform as described on this datasheet, we will offer a refund or replacement. For full details of the Abpromise, please visit <https://www.abcam.com/abpromise> or contact our technical team.

Terms and conditions

- Guarantee only valid for products bought direct from Abcam or one of our authorized distributors