

Product datasheet

Biotin Anti-HLA DR + HLA DP antibody [MEM-136] ab239239

[1 Image](#)

Overview

Product name	Biotin Anti-HLA DR + HLA DP antibody [MEM-136]
Description	Biotin Mouse monoclonal [MEM-136] to HLA DR + HLA DP
Host species	Mouse
Conjugation	Biotin
Specificity	ab239239 recognizes a common epitope on beta-chain of human HLA-DR and HLA-DP. It reacts with alpha/beta dimer as well as with dissociated beta-subunit.
Tested applications	Suitable for: Flow Cyt
Species reactivity	Reacts with: Human
Immunogen	Tissue, cells or virus corresponding to Human HLA DR + HLA DP. (PHA-activated peripheral blood lymphocytes).
Positive control	Flow Cyt: Human peripheral blood.
General notes	<p>The Life Science industry has been in the grips of a reproducibility crisis for a number of years. Abcam is leading the way in addressing this with our range of recombinant monoclonal antibodies and knockout edited cell lines for gold-standard validation. Please check that this product meets your needs before purchasing.</p> <p>If you have any questions, special requirements or concerns, please send us an inquiry and/or contact our Support team ahead of purchase. Recommended alternatives for this product can be found below, along with publications, customer reviews and Q&As</p>

Properties

Form	Liquid
Storage instructions	Shipped at 4°C. Store at +4°C short term (1-2 weeks). Upon delivery aliquot. Store at -20°C long term. Avoid freeze / thaw cycle. Store In the Dark.
Storage buffer	<p>pH: 7.40</p> <p>Preservative: 0.0975% Sodium azide</p> <p>Constituent: PBS</p>
Purity	Size exclusion
Purification notes	Purified antibody is conjugated with Biotin-LC-NHS under optimum conditions. The reagent is

	free of unconjugated biotin.
Clonality	Monoclonal
Clone number	MEM-136
Isotype	IgG1

Applications

The Abpromise guarantee Our **Abpromise guarantee** covers the use of ab239239 in the following tested applications.

The application notes include recommended starting dilutions; optimal dilutions/concentrations should be determined by the end user.

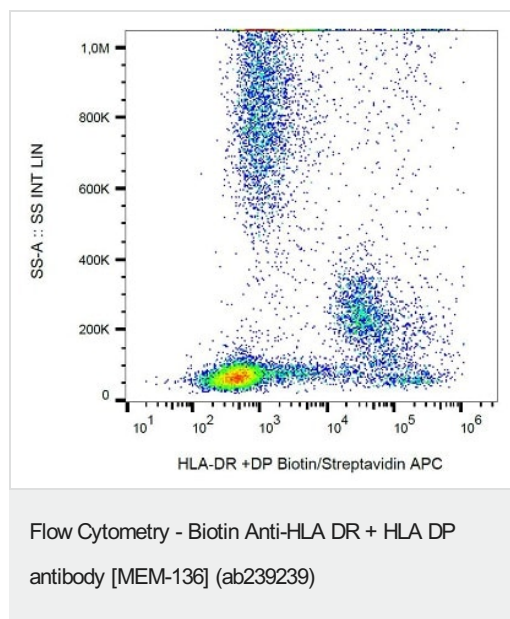
Application	Abreviews	Notes
Flow Cyt		Use a concentration of 1 µg/ml.

Target

Relevance Human MHC class II antigens are transmembrane glycoproteins composed of an alpha (36 kDa) and a beta chain (27kDa) and are expressed primarily on antigen presenting cells. Human MHC class II genes are located in the HLA-D region that encodes at least 6 alpha and 10 beta chain genes. Three loci, DR, DQ and DP, encode the major products of the human class II region. The human MHC class II molecules bind intracellularly processed peptides and present them to T-helper cells and therefore have a critical role in the initiation of the immune response. It has been shown that some autoimmune diseases are associated with certain class II alleles.

Cellular localization Cell Membrane; Single pass type I membrane protein

Images



Flow cytometric analysis of human peripheral blood labeling HLA DR + HLA DP with ab239239 at 1/400 dilution. Surface staining. Gated on leukocytes.

Please note: All products are "FOR RESEARCH USE ONLY. NOT FOR USE IN DIAGNOSTIC PROCEDURES"

Our Abpromise to you: Quality guaranteed and expert technical support

- Replacement or refund for products not performing as stated on the datasheet
- Valid for 12 months from date of delivery
- Response to your inquiry within 24 hours

- We provide support in Chinese, English, French, German, Japanese and Spanish
- Extensive multi-media technical resources to help you
- We investigate all quality concerns to ensure our products perform to the highest standards

If the product does not perform as described on this datasheet, we will offer a refund or replacement. For full details of the Abpromise, please visit <https://www.abcam.com/abpromise> or contact our technical team.

Terms and conditions

- Guarantee only valid for products bought direct from Abcam or one of our authorized distributors