



## Product datasheet

# Biotin Anti-HLA G antibody [4H84] ab52456

[1 References](#) [1 Image](#)

### Overview

<b>Product name</b>	Biotin Anti-HLA G antibody [4H84]
<b>Description</b>	Biotin Mouse monoclonal [4H84] to HLA G
<b>Host species</b>	Mouse
<b>Conjugation</b>	Biotin
<b>Tested applications</b>	<b>Suitable for:</b> WB
<b>Species reactivity</b>	<b>Reacts with:</b> Human
<b>Immunogen</b>	Synthetic peptide corresponding to Human HLA G aa 61-83. Sequence: DSDSACPRMEPRAPWVEQEGPEY  Database link: <a href="#">P17693</a> <div>  <a href="#">Run BLAST with</a>  <a href="#">Run BLAST with</a> </div>
<b>Positive control</b>	WB: HLA-G1 transfectants (LCL-HLA-G1).
<b>General notes</b>	<p>The Life Science industry has been in the grips of a reproducibility crisis for a number of years. Abcam is leading the way in addressing this with our range of recombinant monoclonal antibodies and knockout edited cell lines for gold-standard validation. Please check that this product meets your needs before purchasing.</p> <p>If you have any questions, special requirements or concerns, please send us an inquiry and/or contact our Support team ahead of purchase. Recommended alternatives for this product can be found below, along with publications, customer reviews and Q&amp;As</p>

### Properties

<b>Form</b>	Liquid
<b>Storage instructions</b>	Shipped at 4°C. Store at +4°C short term (1-2 weeks). Store at -20°C or -80°C. Avoid freeze / thaw cycle.
<b>Storage buffer</b>	pH: 7.40 Preservative: 0.097% Sodium azide Constituent: PBS
<b>Purity</b>	Protein A purified
<b>Purification notes</b>	Prior to conjugation, ab52456 was purified by Protein A affinity chromatography. Purity >95% by

	SDS-PAGE.
<b>Clonality</b>	Monoclonal
<b>Clone number</b>	4H84
<b>Isotype</b>	IgG1

## Applications

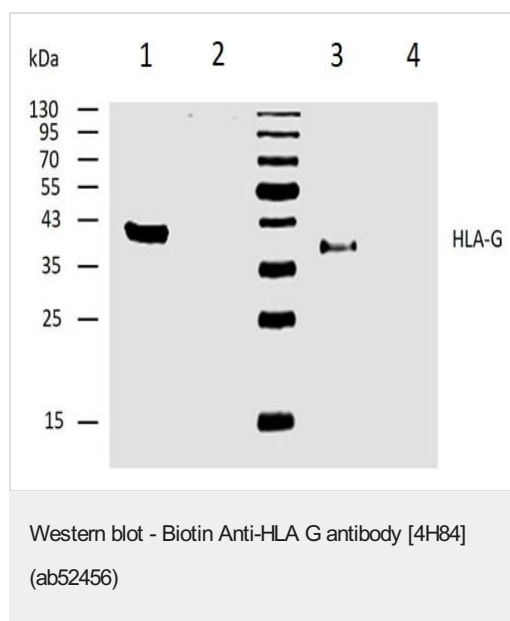
**The Abpromise guarantee** Our **Abpromise guarantee** covers the use of ab52456 in the following tested applications. The application notes include recommended starting dilutions; optimal dilutions/concentrations should be determined by the end user.

Application	Abreviews	Notes
<b>WB</b>		Use a concentration of 1 - 2 µg/ml. Detects a band of approximately 40 kDa (predicted molecular weight: 38 kDa).

## Target

<b>Function</b>	Involved in the presentation of foreign antigens to the immune system. Plays a role in maternal tolerance of the fetus by mediating protection from the deleterious effects of natural killer cells, cytotoxic T lymphocytes, macrophages and mononuclear cells.
<b>Tissue specificity</b>	Expressed in trophoblasts.
<b>Sequence similarities</b>	Belongs to the MHC class I family. Contains 1 Ig-like C1-type (immunoglobulin-like) domain.
<b>Cellular localization</b>	Membrane.

## Images



**All lanes :** Biotin Anti-HLA G antibody [4H84] (ab52456) at 2 µg/ml

**Lane 1 :** JEG-3 red

**Lane 2 :** LNCaP red

**Lane 3 :** JEG-3 non-red

**Lane 4 :** LNCaP non-red

**Predicted band size:** 38 kDa

**Observed band size:** 39 kDa

Following biotinylated mouse anti-HLA-G monoclonal antibody (ab52456) incubation, IRDye800-conjugated streptavidin was added to the nitrocellulose membrane.

**Please note:** All products are "FOR RESEARCH USE ONLY. NOT FOR USE IN DIAGNOSTIC PROCEDURES"

### **Our Abpromise to you: Quality guaranteed and expert technical support**

---

- Replacement or refund for products not performing as stated on the datasheet
- Valid for 12 months from date of delivery
- Response to your inquiry within 24 hours
  
- We provide support in Chinese, English, French, German, Japanese and Spanish
- Extensive multi-media technical resources to help you
- We investigate all quality concerns to ensure our products perform to the highest standards

If the product does not perform as described on this datasheet, we will offer a refund or replacement. For full details of the Abpromise, please visit <https://www.abcam.com/abpromise> or contact our technical team.

### **Terms and conditions**

---

- Guarantee only valid for products bought direct from Abcam or one of our authorized distributors