

## Product datasheet

### Biotin Anti-HLA G antibody [5A6G7] $\alpha$ b239332

1 Image

#### Overview

<b>Product name</b>	Biotin Anti-HLA G antibody [5A6G7]
<b>Description</b>	Biotin Mouse monoclonal [5A6G7] to HLA G
<b>Host species</b>	Mouse
<b>Conjugation</b>	Biotin
<b>Tested applications</b>	<b>Suitable for:</b> Flow Cyt (Intra)
<b>Species reactivity</b>	<b>Reacts with:</b> Human
<b>Immunogen</b>	Synthetic peptide corresponding to Human HLA G (C terminal) conjugated to ovalbumin. (22-mer of soluble HLA-G5 and HLA-G6 proteins). Database link: <a href="#">P17693</a>
<b>Positive control</b>	Flow Cyt (Intra): HEK-293 HLA G1 transfectants.
<b>General notes</b>	<p>The Life Science industry has been in the grips of a reproducibility crisis for a number of years. Abcam is leading the way in addressing this with our range of recombinant monoclonal antibodies and knockout edited cell lines for gold-standard validation. Please check that this product meets your needs before purchasing.</p> <p>If you have any questions, special requirements or concerns, please send us an inquiry and/or contact our Support team ahead of purchase. Recommended alternatives for this product can be found below, along with publications, customer reviews and Q&amp;As</p>

#### Properties

<b>Form</b>	Liquid
<b>Storage instructions</b>	Shipped at 4°C. Store at +4°C short term (1-2 weeks). Upon delivery aliquot. Store at -20°C long term. Avoid freeze / thaw cycle. Store In the Dark.
<b>Storage buffer</b>	pH: 7.4 Preservative: 0.0975% Sodium azide Constituent: PBS
<b>Purity</b>	Size exclusion
<b>Purification notes</b>	Purified antibody is conjugated with Biotin-LC-NHS under optimum conditions. The reagent is free of unconjugated biotin.
<b>Clonality</b>	Monoclonal

Clone number	5A6G7
Isotype	IgG1

## Applications

**The Abpromise guarantee** Our **Abpromise guarantee** covers the use of ab239332 in the following tested applications. The application notes include recommended starting dilutions; optimal dilutions/concentrations should be determined by the end user.

Application	Abreviews	Notes
Flow Cyt (Intra)		Use a concentration of 1 - 4 µg/ml.

## Target

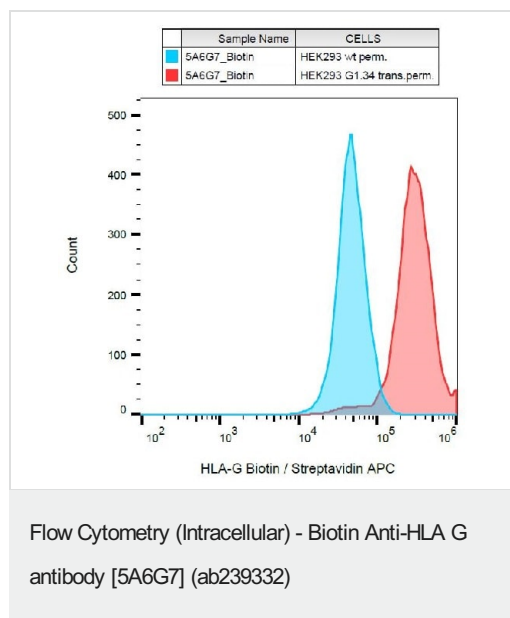
**Function** Involved in the presentation of foreign antigens to the immune system. Plays a role in maternal tolerance of the fetus by mediating protection from the deleterious effects of natural killer cells, cytotoxic T lymphocytes, macrophages and mononuclear cells.

**Tissue specificity** Expressed in trophoblasts.

**Sequence similarities** Belongs to the MHC class I family.  
Contains 1 Ig-like C1-type (immunoglobulin-like) domain.

**Cellular localization** Membrane.

## Images



Flow cytometric analysis (intracellular staining) of HEK-293 (Human epithelial cell line from embryonic kidney) HLA G1 transfectants (red) labeling HLA G with ab239332, compared with wild type HEK-293 cells (blue). Gated on HEK-293 cells.

**Please note:** All products are "FOR RESEARCH USE ONLY. NOT FOR USE IN DIAGNOSTIC PROCEDURES"

**Our Abpromise to you: Quality guaranteed and expert technical support**

- Replacement or refund for products not performing as stated on the datasheet
- Valid for 12 months from date of delivery
- Response to your inquiry within 24 hours
- We provide support in Chinese, English, French, German, Japanese and Spanish
- Extensive multi-media technical resources to help you
- We investigate all quality concerns to ensure our products perform to the highest standards

If the product does not perform as described on this datasheet, we will offer a refund or replacement. For full details of the Abpromise, please visit <https://www.abcam.com/abpromise> or contact our technical team.

#### **Terms and conditions**

---

- Guarantee only valid for products bought direct from Abcam or one of our authorized distributors