

Product datasheet

Biotin Anti-HLA G antibody [87G] ab239333

[1 Image](#)

Overview

Product name	Biotin Anti-HLA G antibody [87G]
Description	Biotin Mouse monoclonal [87G] to HLA G
Host species	Mouse
Conjugation	Biotin
Tested applications	Suitable for: Flow Cyt
Species reactivity	Reacts with: Human Does not react with: Mouse, Rat
Immunogen	Tissue, cells or virus. (HLA-B27 transgenic mice were immunized with H-2 identical murine cells transfected with and expressing genes encoding HLA-G and human beta2-microglobulin).
Positive control	Flow Cyt: HLA G transfectants.
General notes	<p>The Life Science industry has been in the grips of a reproducibility crisis for a number of years. Abcam is leading the way in addressing this with our range of recombinant monoclonal antibodies and knockout edited cell lines for gold-standard validation. Please check that this product meets your needs before purchasing.</p> <p>If you have any questions, special requirements or concerns, please send us an inquiry and/or contact our Support team ahead of purchase. Recommended alternatives for this product can be found below, along with publications, customer reviews and Q&As</p>

Properties

Form	Liquid
Storage instructions	Shipped at 4°C. Store at +4°C short term (1-2 weeks). Upon delivery aliquot. Store at -20°C long term. Avoid freeze / thaw cycle. Store In the Dark.
Storage buffer	pH: 7.40 Preservative: 0.0975% Sodium azide Constituent: PBS
Purity	Size exclusion
Purification notes	Purified antibody is conjugated with Biotin-LC-NHS under optimum conditions. The reagent is free of unconjugated biotin.
Clonality	Monoclonal

Clone number 87G
Isotype IgG2a

Applications

The Abpromise guarantee Our **Abpromise guarantee** covers the use of ab239333 in the following tested applications. The application notes include recommended starting dilutions; optimal dilutions/concentrations should be determined by the end user.

Application	Abreviews	Notes
Flow Cyt		Use a concentration of 1 - 3 µg/ml.

Target

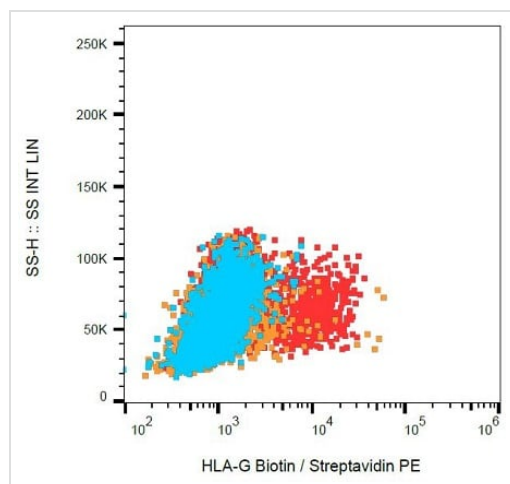
Function Involved in the presentation of foreign antigens to the immune system. Plays a role in maternal tolerance of the fetus by mediating protection from the deleterious effects of natural killer cells, cytotoxic T lymphocytes, macrophages and mononuclear cells.

Tissue specificity Expressed in trophoblasts.

Sequence similarities Belongs to the MHC class I family.
Contains 1 Ig-like C1-type (immunoglobulin-like) domain.

Cellular localization Membrane.

Images



Flow cytometric analysis of HLA G transfectants (red), compared with K562 cells (orange) and blank (blue), labeling HLA G with ab239333 at 1/500 dilution, followed by streptavidin-PE. Surface staining.

Flow Cytometry - Biotin Anti-HLA G antibody [87G] (ab239333)

Please note: All products are "FOR RESEARCH USE ONLY. NOT FOR USE IN DIAGNOSTIC PROCEDURES"

Our Abpromise to you: Quality guaranteed and expert technical support

- Replacement or refund for products not performing as stated on the datasheet
- Valid for 12 months from date of delivery
- Response to your inquiry within 24 hours

- We provide support in Chinese, English, French, German, Japanese and Spanish
- Extensive multi-media technical resources to help you
- We investigate all quality concerns to ensure our products perform to the highest standards

If the product does not perform as described on this datasheet, we will offer a refund or replacement. For full details of the Abpromise, please visit <https://www.abcam.com/abpromise> or contact our technical team.

Terms and conditions

- Guarantee only valid for products bought direct from Abcam or one of our authorized distributors