

Product datasheet

Biotin Anti-Human Serum Albumin antibody ab24207

★★★★☆ [1 Abreviews](#) [2 References](#) [1 Image](#)

Overview

Product name	Biotin Anti-Human Serum Albumin antibody
Description	Biotin Rabbit polyclonal to Human Serum Albumin
Host species	Rabbit
Conjugation	Biotin
Tested applications	Suitable for: ELISA, IHC-P, WB, ICC/IF
Species reactivity	Reacts with: Human
Immunogen	Full length protein corresponding to Human Human Serum Albumin.
General notes	<p>The Life Science industry has been in the grips of a reproducibility crisis for a number of years. Abcam is leading the way in addressing this with our range of recombinant monoclonal antibodies and knockout edited cell lines for gold-standard validation. Please check that this product meets your needs before purchasing.</p> <p>If you have any questions, special requirements or concerns, please send us an inquiry and/or contact our Support team ahead of purchase. Recommended alternatives for this product can be found below, along with publications, customer reviews and Q&As</p>

Properties

Form	Liquid
Storage instructions	Shipped at 4°C. Store at +4°C short term (1-2 weeks). Store at -20°C or -80°C. Avoid freeze / thaw cycle.
Storage buffer	Preservative: 0.01% Sodium azide Constituents: 0.42% Potassium phosphate, 0.87% Sodium chloride, 1% Polyethylene glycol
Purity	Protein A purified
Purification notes	Purified from monospecific antiserum by Protein A Sepharose Fast Flow followed by POROS EP antigen resin affinity purification. The eluate was conjugated to biotin, re-purified, and then dialyzed against PBS with sodium azide prior to lyophilization.
Clonality	Polyclonal
Isotype	IgG

Applications

The Abpromise guarantee

Our **Abpromise guarantee** covers the use of ab24207 in the following tested applications.

The application notes include recommended starting dilutions; optimal dilutions/concentrations should be determined by the end user.

Application	Abreviews	Notes
ELISA	★★★★★ (1)	Use at an assay dependent concentration.
IHC-P		Use at an assay dependent concentration.
WB		1/1000 - 1/5000. Predicted molecular weight: 69 kDa.
ICC/IF		Use at an assay dependent concentration.

Target

Function

Serum albumin, the main protein of plasma, has a good binding capacity for water, Ca(2+), Na(+), K(+), fatty acids, hormones, bilirubin and drugs. Its main function is the regulation of the colloidal osmotic pressure of blood. Major zinc transporter in plasma, typically binds about 80% of all plasma zinc.

Tissue specificity

Plasma.

Involvement in disease

Defects in ALB are a cause of familial dysalbuminemic hyperthyroxinemia (FDH) [MIM:103600]. FDH is a form of euthyroid hyperthyroxinemia that is due to increased affinity of ALB for T(4). It is the most common cause of inherited euthyroid hyperthyroxinemia in Caucasian population.

Sequence similarities

Belongs to the ALB/AFP/VDB family.
Contains 3 albumin domains.

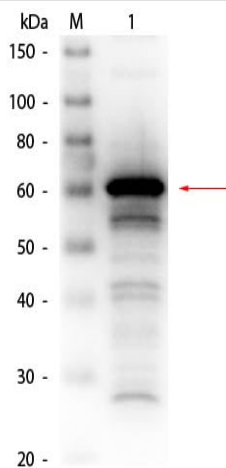
Post-translational modifications

Kenitra variant is partially O-glycosylated at Thr-620. It has two new disulfide bonds Cys-600 to Cys-602 and Cys-601 to Cys-606.
Glycated in diabetic patients.
Phosphorylation sites are present in the extracellular medium.
Acetylated on Lys-223 by acetylsalicylic acid.

Cellular localization

Secreted.

Images



Western blot - Biotin Anti-Human Serum Albumin antibody (ab24207)

Biotin Anti-Human Serum Albumin antibody (ab24207) at 1/1000 dilution + Human Serum Albumin at 0.05 μ g

Secondary

HRP Streptavidin at 1/40000 dilution

Predicted band size: 69 kDa

Observed band size: 61 kDa

Please note: All products are "FOR RESEARCH USE ONLY. NOT FOR USE IN DIAGNOSTIC PROCEDURES"

Our Abpromise to you: Quality guaranteed and expert technical support

- Replacement or refund for products not performing as stated on the datasheet
- Valid for 12 months from date of delivery
- Response to your inquiry within 24 hours

- We provide support in Chinese, English, French, German, Japanese and Spanish
- Extensive multi-media technical resources to help you
- We investigate all quality concerns to ensure our products perform to the highest standards

If the product does not perform as described on this datasheet, we will offer a refund or replacement. For full details of the Abpromise, please visit <https://www.abcam.com/abpromise> or contact our technical team.

Terms and conditions

- Guarantee only valid for products bought direct from Abcam or one of our authorized distributors