

## Product datasheet

# Biotin Anti-Human Serum Albumin antibody [AL-01] ab81426

[1 References](#) [1 Image](#)

### Overview

<b>Product name</b>	Biotin Anti-Human Serum Albumin antibody [AL-01]
<b>Description</b>	Biotin Mouse monoclonal [AL-01] to Human Serum Albumin
<b>Host species</b>	Mouse
<b>Conjugation</b>	Biotin
<b>Specificity</b>	Reacts only with Human Serum Albumin. No cross-reactivity was observed with other serum proteins.
<b>Tested applications</b>	<b>Suitable for:</b> WB
<b>Species reactivity</b>	<b>Reacts with:</b> Human <b>Does not react with:</b> Mammals
<b>Immunogen</b>	Full length native protein (purified) corresponding to Human Human Serum Albumin. Fraction of proteins containing Albumin after ammonium sulphate precipitation and DEAE-chromatography of Human serum.
<b>Positive control</b>	WB: Human plasma.
<b>General notes</b>	<p>The Life Science industry has been in the grips of a reproducibility crisis for a number of years. Abcam is leading the way in addressing this with our range of recombinant monoclonal antibodies and knockout edited cell lines for gold-standard validation. Please check that this product meets your needs before purchasing.</p> <p>If you have any questions, special requirements or concerns, please send us an inquiry and/or contact our Support team ahead of purchase. Recommended alternatives for this product can be found below, along with publications, customer reviews and Q&amp;As</p>

### Properties

<b>Form</b>	Liquid
<b>Storage instructions</b>	Shipped at 4°C. Store at +4°C short term (1-2 weeks). Store at -20°C or -80°C. Avoid freeze / thaw cycle.
<b>Storage buffer</b>	pH: 7.40 Preservative: 0.097% Sodium azide Constituent: PBS

<b>Purity</b>	Size exclusion
<b>Clonality</b>	Monoclonal
<b>Clone number</b>	AL-01
<b>Isotype</b>	IgG1

## Applications

**The Abpromise guarantee** Our **Abpromise guarantee** covers the use of ab81426 in the following tested applications.

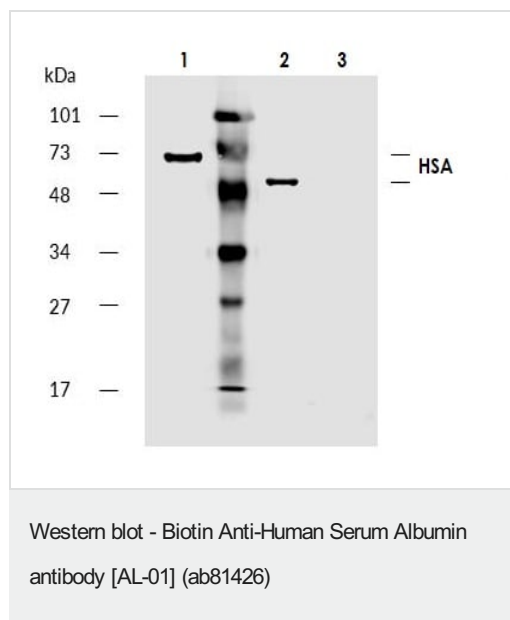
The application notes include recommended starting dilutions; optimal dilutions/concentrations should be determined by the end user.

Application	Abreviews	Notes
<b>WB</b>		Use a concentration of 2 - 5 µg/ml. Predicted molecular weight: 69 kDa.

## Target

<b>Function</b>	Serum albumin, the main protein of plasma, has a good binding capacity for water, Ca(2+), Na(+), K(+), fatty acids, hormones, bilirubin and drugs. Its main function is the regulation of the colloidal osmotic pressure of blood. Major zinc transporter in plasma, typically binds about 80% of all plasma zinc.
<b>Tissue specificity</b>	Plasma.
<b>Involvement in disease</b>	Defects in ALB are a cause of familial dysalbuminemic hyperthyroxinemia (FDH) [MIM:103600]. FDH is a form of euthyroid hyperthyroxinemia that is due to increased affinity of ALB for T(4). It is the most common cause of inherited euthyroid hyperthyroxinemia in Caucasian population.
<b>Sequence similarities</b>	Belongs to the ALB/AFP/VDB family. Contains 3 albumin domains.
<b>Post-translational modifications</b>	Kenitra variant is partially O-glycosylated at Thr-620. It has two new disulfide bonds Cys-600 to Cys-602 and Cys-601 to Cys-606. Glycated in diabetic patients. Phosphorylation sites are present in the extracellular medium. Acetylated on Lys-223 by acetylsalicylic acid.
<b>Cellular localization</b>	Secreted.

## Images



**All lanes :** Biotin Anti-Human Serum Albumin antibody [AL-01] (ab81426) at 5 µg/ml

**Lane 1 :** Human plasma (non-reducing conditions)

**Lane 2 :** Human plasma (reducing conditions)

**Lane 3 :** HeLa (Human epithelial cell line from cervix adenocarcinoma) cell lysate (reducing conditions)

#### Secondary

**All lanes :** IRDye800-conjugated Streptavidin

**Predicted band size:** 69 kDa

The experiment was conducted under reducing and non-reducing conditions.

**Negative control:** HeLa cell lysate.

**Please note:** All products are "FOR RESEARCH USE ONLY. NOT FOR USE IN DIAGNOSTIC PROCEDURES"

#### Our Abpromise to you: Quality guaranteed and expert technical support

- Replacement or refund for products not performing as stated on the datasheet
- Valid for 12 months from date of delivery
- Response to your inquiry within 24 hours
- We provide support in Chinese, English, French, German, Japanese and Spanish
- Extensive multi-media technical resources to help you
- We investigate all quality concerns to ensure our products perform to the highest standards

If the product does not perform as described on this datasheet, we will offer a refund or replacement. For full details of the Abpromise, please visit <https://www.abcam.com/abpromise> or contact our technical team.

#### Terms and conditions

- Guarantee only valid for products bought direct from Abcam or one of our authorized distributors