

Product datasheet

Biotin Anti-IgD antibody [RM123] ab224182

Recombinant

[5 Images](#)

Overview

Product name	Biotin Anti-IgD antibody [RM123]
Description	Biotin Rabbit monoclonal [RM123] to IgD
Host species	Rabbit
Conjugation	Biotin
Specificity	ab224182 reacts to human IgD. No cross reactivity with human IgG, IgM, IgA, or IgE.
Tested applications	Suitable for: Sandwich ELISA, ELISA, IHC
Species reactivity	Reacts with: Human
Immunogen	Full length native protein (purified) corresponding to Human IgD aa 1 to the C-terminus. Database link: P01880

 [Run BLAST with](#)

 [Run BLAST with](#)

Properties

Form	Liquid
Storage instructions	Shipped at 4°C. Store at +4°C short term (1-2 weeks). Upon delivery aliquot. Store at -20°C. Stable for 12 months at -20°C. Store In the Dark.
Storage buffer	Preservative: 0.09% Sodium azide Constituents: 1% BSA, 50% Glycerol (glycerin, glycerine), PBS
Purity	Protein A purified
Purification notes	ab224182 was purified from an animal origin-free culture supernatant .
Clonality	Monoclonal
Clone number	RM123
Isotype	IgG

Applications

The Abpromise guarantee Our **Abpromise guarantee** covers the use of ab224182 in the following tested applications.
The application notes include recommended starting dilutions; optimal dilutions/concentrations should be determined by the end user.

Application	Abreviews	Notes
Sandwich ELISA		Use at an assay dependent concentration. Use: 25 - 200 ng/well (for capture); 0.01 - 0.1 µg/ml (for detection).
ELISA		Use at an assay dependent concentration.
IHC		Use a concentration of 0.5 - 2 µg/ml.

Target

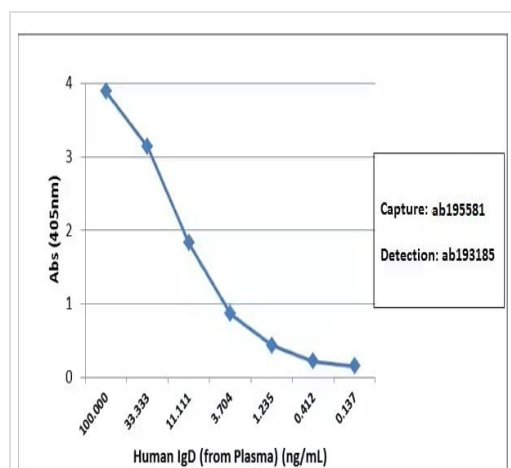
Relevance

Little is known about the normal function of IgD, and few clinical signs or symptoms are associated with its absence. Individuals with low or absent levels of IgD do not appear unusually predisposed to infections. In mice, IgD may substitute for some functions of IgM when IgM is absent. IgD is expressed on peripheral B cells and is used as a pan B cell marker.

Cellular localization

Cytoplasmic

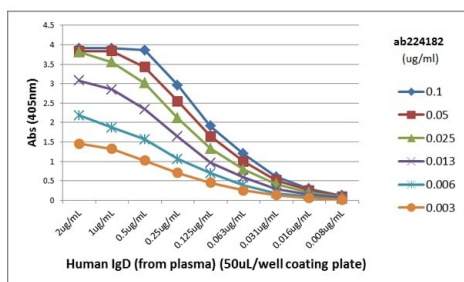
Images



Sandwich ELISA - Biotin Anti-IgD antibody [RM123]
(ab224182)

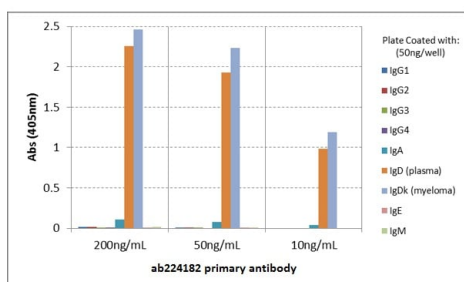
This data was developed using the same antibody clone **ab195581** (unbiotinylated).

Sandwich ELISA using **ab195581** as the capture antibody (100 ng/well), and Biotin Anti-Human Ig light chain antibody **ab193185** as the detection antibody, followed by an alkaline phosphatase conjugated streptavidin.



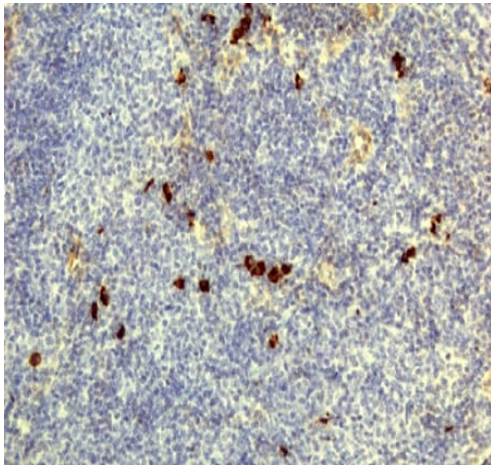
ELISA - Biotin Anti-IgD antibody [RM123]
(ab224182)

A titre ELISA using ab224182. The plate was coated with different amounts of human IgD from plasma. A serial dilution of ab224182 was used as primary antibody. An alkaline phosphatase-conjugated Anti-Rabbit IgG was used as secondary antibody.



ELISA - Biotin Anti-IgD antibody [RM123]
(ab224182)

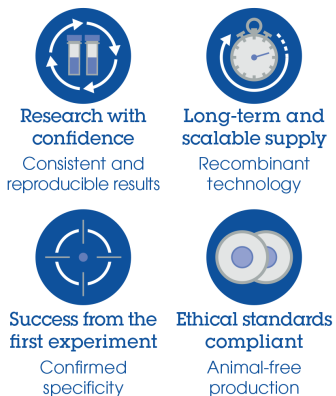
ELISA of human immunoglobulins shows that ab224182 reacts to IgD from human plasma and IgDk from human melanoma. No cross reactivity with human IgG, IgM, IgA or IgE. The plate was coated with 50 ng/well of the different immunoglobulins. 200 ng/ml, 50 ng/ml or 10 ng/ml of ab224182 was used as the primary antibody. An alkaline phosphatase-conjugated Anti-Rabbit IgG was used as secondary antibody.



Human lymphoid tissue stained for IgD with ab224182 (2 µg/ml) in immunohistochemical analysis.

Immunohistochemistry - Biotin Anti-IgD antibody
[RM123] (ab224182)

Why choose a recombinant antibody?



Biotin Anti-IgD antibody [RM123] (ab224182)

Please note: All products are "FOR RESEARCH USE ONLY. NOT FOR USE IN DIAGNOSTIC PROCEDURES"

Our Abpromise to you: Quality guaranteed and expert technical support

- Replacement or refund for products not performing as stated on the datasheet
- Valid for 12 months from date of delivery
- Response to your inquiry within 24 hours
- We provide support in Chinese, English, French, German, Japanese and Spanish
- Extensive multi-media technical resources to help you

- We investigate all quality concerns to ensure our products perform to the highest standards

If the product does not perform as described on this datasheet, we will offer a refund or replacement. For full details of the Abpromise, please visit <https://www.abcam.com/abpromise> or contact our technical team.

Terms and conditions

- Guarantee only valid for products bought direct from Abcam or one of our authorized distributors