




Product datasheet

Biotin Anti-IL-16 antibody ab271199

[2 Images](#)

Overview

Product name	Biotin Anti-IL-16 antibody
Description	Biotin Rabbit polyclonal to IL-16
Host species	Rabbit
Conjugation	Biotin
Tested applications	Suitable for: WB, ELISA
Species reactivity	Reacts with: Recombinant fragment Predicted to work with: Human 
Immunogen	Recombinant fragment corresponding to Human IL-16 aa 1200-1350. Database link: Q14005  Run BLAST with  Run BLAST with
Positive control	WB: Recombinant human IL-16 protein.
General notes	<p>The Life Science industry has been in the grips of a reproducibility crisis for a number of years. Abcam is leading the way in addressing this with our range of recombinant monoclonal antibodies and knockout edited cell lines for gold-standard validation. Please check that this product meets your needs before purchasing.</p> <p>If you have any questions, special requirements or concerns, please send us an inquiry and/or contact our Support team ahead of purchase. Recommended alternatives for this product can be found below, along with publications, customer reviews and Q&As</p>

Properties

Form	Lyophilized:Reconstitute in sterile PBS with 0.1% BSA to 0.1 - 1.0 mg/ml.
Storage instructions	Shipped at 4°C. Store at +4°C short term (1-2 weeks). Upon delivery aliquot. Store at -20°C long term. Avoid freeze / thaw cycle. Store In the Dark.
Storage buffer	Constituents: PBS, 0.1% BSA
Purity	Affinity purified
Clonality	Polyclonal
Isotype	IgG

Applications

The Abpromise guarantee

Our **Abpromise guarantee** covers the use of ab271199 in the following tested applications.

The application notes include recommended starting dilutions; optimal dilutions/concentrations should be determined by the end user.

Application	Abreviews	Notes
WB		Use a concentration of 0.1 - 0.2 µg/ml. Predicted molecular weight: 142 kDa.
ELISA		Use a concentration of 0.25 - 1 µg/ml. Human IL-16 was detected by sandwich ELISA (using 100µl/well) using a concentration of 0.25-1.0 µg/ml of ab271199. This antibody in conjunction with an appropriate capture antibody, allows the detection of at least 0.2-0.4 ng/well of recombinant hIL-16 protein.

Target**Function**

Interleukin-16 stimulates a migratory response in CD4+ lymphocytes, monocytes, and eosinophils. Primes CD4+ T-cells for IL-2 and IL-15 responsiveness. Also induces T-lymphocyte expression of interleukin 2 receptor. Ligand for CD4.

Isoform 1 may act as a scaffolding protein that anchors ion channels in the membrane.

Isoform 3 is involved in cell cycle progression in T-cells. Appears to be involved in transcriptional regulation of SKP2 and is probably part of a transcriptional repression complex on the core promoter of the SKP2 gene. May act as a scaffold for GABPB1 (the DNA-binding subunit the GABP transcription factor complex) and HDAC3 thus maintaining transcriptional repression and blocking cell cycle progression in resting T-cells.

Tissue specificity

Isoform 3 is expressed in hemopoietic tissues, such as resting T-cells, but is undetectable during active T cell proliferation.

Sequence similarities

Contains 4 PDZ (DHR) domains.

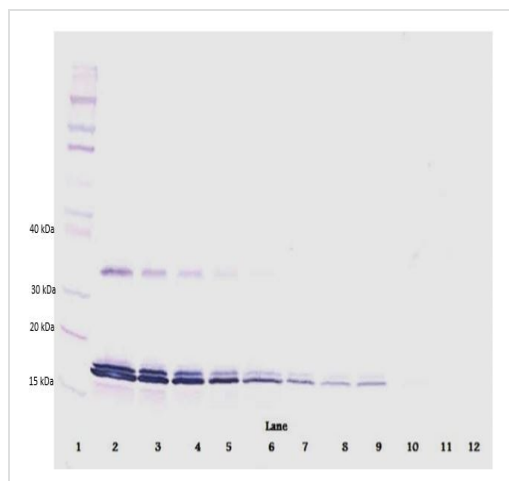
Post-translational modifications

Isoform 3 is synthesized as a chemo-attractant inactive precursor in hemopoietic tissues and is proteolytically cleaved by caspase-3 to yield IL-16.

Cellular localization

Cytoplasm; Cytoplasm. Nucleus and Secreted.

Images



Western blot - Biotin Anti-IL-16 antibody (ab271199)

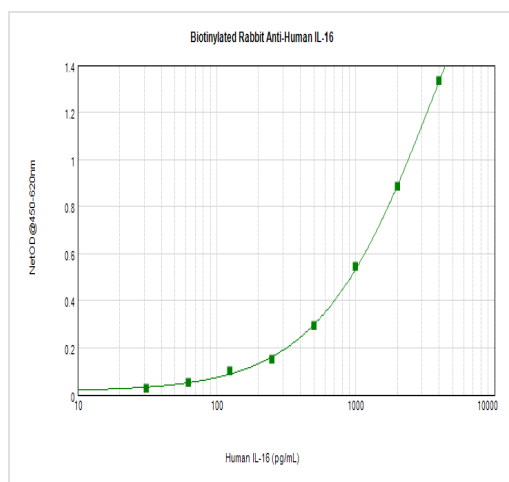
To detect hIL-16 by Western Blot analysis this antibody can be used at a concentration of 0.1 - 0.2 µg/ml.

Used in conjunction with compatible secondary reagents the detection limit for recombinant hIL-16 is 1.5 - 3.0 ng/lane, under either reducing or non-reducing conditions.

Lane 1: Marker

Lanes 2-12: 250, 125, 62.5, 31.25, 15.625, 7.8, 3.9, 1.95, 0.975, 0.4875 and 0.24 ng recombinant human IL-16, respectively.

Non-reducing conditions.



ELISA - Biotin Anti-IL-16 antibody (ab271199)

Human IL-16 was detected by sandwich ELISA (using 100 µl/well) using a concentration of 0.25-1.0 µg/ml of ab271199.

This antibody in conjunction with an appropriate capture antibody, allows the detection of at least 0.2-0.4 ng/well of recombinant IL-16 protein.

Please note: All products are "FOR RESEARCH USE ONLY. NOT FOR USE IN DIAGNOSTIC PROCEDURES"

Our Promise to you: Quality guaranteed and expert technical support

- Replacement or refund for products not performing as stated on the datasheet
- Valid for 12 months from date of delivery

- Response to your inquiry within 24 hours
- We provide support in Chinese, English, French, German, Japanese and Spanish
- Extensive multi-media technical resources to help you
- We investigate all quality concerns to ensure our products perform to the highest standards

If the product does not perform as described on this datasheet, we will offer a refund or replacement. For full details of the Abpromise, please visit <https://www.abcam.com/abpromise> or contact our technical team.

Terms and conditions

- Guarantee only valid for products bought direct from Abcam or one of our authorized distributors