

Product datasheet

Biotin Anti-IL-4 antibody ab84278

[2 Images](#)

Overview

Product name	Biotin Anti-IL-4 antibody
Description	Biotin Rabbit polyclonal to IL-4
Host species	Rabbit
Conjugation	Biotin
Tested applications	Suitable for: Sandwich ELISA, WB
Species reactivity	Reacts with: Rat
Immunogen	Recombinant full length protein corresponding to Rat IL-4.
General notes	<p>The Life Science industry has been in the grips of a reproducibility crisis for a number of years. Abcam is leading the way in addressing this with our range of recombinant monoclonal antibodies and knockout edited cell lines for gold-standard validation. Please check that this product meets your needs before purchasing.</p> <p>If you have any questions, special requirements or concerns, please send us an inquiry and/or contact our Support team ahead of purchase. Recommended alternatives for this product can be found below, along with publications, customer reviews and Q&As</p>

Properties

Form	Lyophilized:Centrifuge vial prior to opening. Reconstitute in sterile PBS containing 0.1% BSA to a concentration of 0.1-1.0 mg/ml.
Storage instructions	Shipped at 4°C. Store at +4°C short term (1-2 weeks). Store at -20°C or -80°C. Avoid freeze / thaw cycle.
Storage buffer	Constituent: PBS
Purification notes	ab84278 was purified by affinity chromatography and then biotinylated.It is sterile filtered.
Clonality	Polyclonal
Isotype	IgG

Applications

The Abpromise guarantee Our **Abpromise guarantee** covers the use of ab84278 in the following tested applications. The application notes include recommended starting dilutions; optimal dilutions/concentrations should be determined by the end user.

Application	Abreviews	Notes
Sandwich ELISA		Use a concentration of 0.25 - 1 µg/ml. Use 100 µl/well antibody solution. Detects at least 0.2 – 0.4 ng/well of recombinant rat IL-4.
WB		Use a concentration of 0.1 - 0.2 µg/ml. Predicted molecular weight: 16 kDa. Detection limit for recombinant rat IL-4 is 1.5 - 3.0 ng/lane, under either reducing or non-reducing conditions.

Target

Function

Participates in at least several B-cell activation processes as well as of other cell types. It is a costimulator of DNA-synthesis. It induces the expression of class II MHC molecules on resting B-cells. It enhances both secretion and cell surface expression of IgE and IgG1. It also regulates the expression of the low affinity Fc receptor for IgE (CD23) on both lymphocytes and monocytes.

Involvement in disease

Genetic variations in IL4 may be a cause of susceptibility to ischemic stroke (ISCHSTR) [MIM:601367]; also known as cerebrovascular accident or cerebral infarction. A stroke is an acute neurologic event leading to death of neural tissue of the brain and resulting in loss of motor, sensory and/or cognitive function. Ischemic strokes, resulting from vascular occlusion, is considered to be a highly complex disease consisting of a group of heterogeneous disorders with multiple genetic and environmental risk factors.

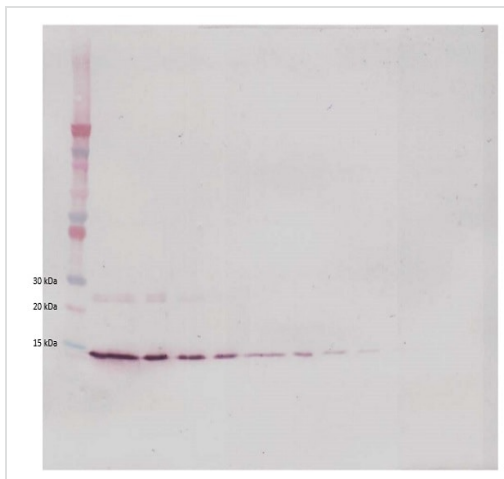
Sequence similarities

Belongs to the IL-4/IL-13 family.

Cellular localization

Secreted.

Images

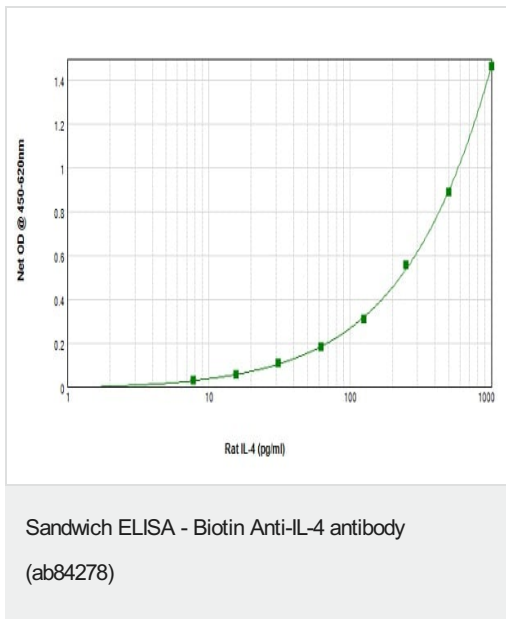


Western blot - Biotin Anti-IL-4 antibody (ab84278)

To detect rat IL-4 by Western Blot analysis ab84278 can be used at a concentration of 0.1 - 0.2 µg/ml. When used in conjunction with compatible secondary reagents, the detection limit for recombinant rat IL-4 is 1.5 - 3.0 ng/lane, under either reducing or non-reducing conditions.

Image shown is non-reducing conditions; Rat recombinant IL-4 protein at 250 - 0.24 ng/ml.

Lane 1 is MW marker, lanes 2-12 rat recombinant IL-4 protein.



To detect rat IL-4 by sandwich ELISA (using 100 µl/well antibody solution) a concentration of 0.25 – 1.0 µg/ml of ab84278 is required. Using this antibody in conjunction with an anti-IL-4 (**ab9811**) as a capture antibody, allows the detection of at least 0.2 – 0.4 ng/well of recombinant rat IL-4.

Please note: All products are "FOR RESEARCH USE ONLY. NOT FOR USE IN DIAGNOSTIC PROCEDURES"

Our Abpromise to you: Quality guaranteed and expert technical support

- Replacement or refund for products not performing as stated on the datasheet
- Valid for 12 months from date of delivery
- Response to your inquiry within 24 hours
- We provide support in Chinese, English, French, German, Japanese and Spanish
- Extensive multi-media technical resources to help you
- We investigate all quality concerns to ensure our products perform to the highest standards

If the product does not perform as described on this datasheet, we will offer a refund or replacement. For full details of the Abpromise, please visit <https://www.abcam.com/abpromise> or contact our technical team.

Terms and conditions

- Guarantee only valid for products bought direct from Abcam or one of our authorized distributors